



Rosebery Road, SW2

£3,300 Per calendar month

A spacious three double bedroom, three bathroom property in Brixton. Split over two levels, offering a large reception room, separate kitchen, wooden flooring and neutral interior throughout.

Rosebery Road is well located just off of Kings Avenue, moments from Abbeville Village. Transport links are excellent from Clapham Common, North and South (Northern Line).

Features

- Three Double Bedrooms
- Top Floor Flat
- Three Bathrooms
- Spacious Reception
- Split-Level Flat
- Neutral Interior



Rosebery Road, SW2

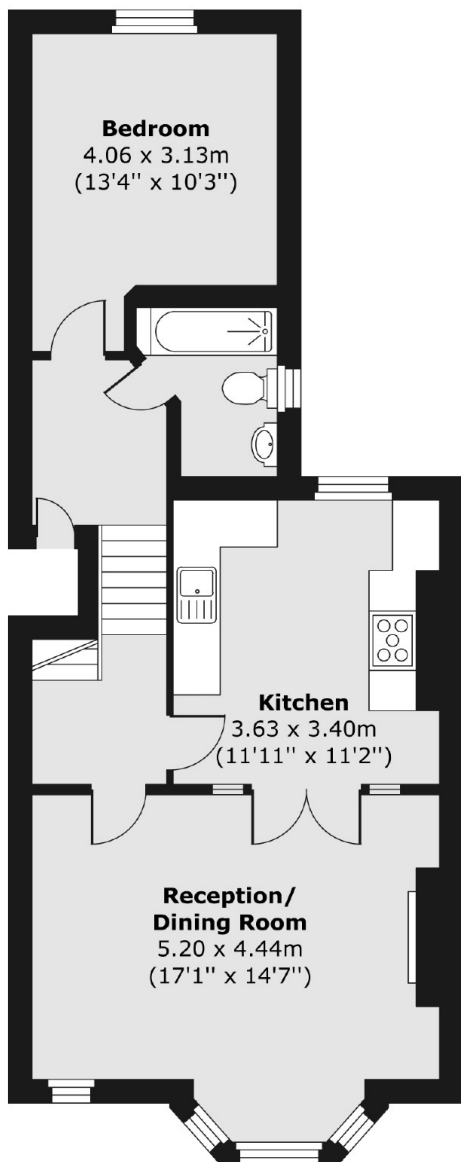
The property provides a generous amount of living space throughout, with details that include a feature fireplace, bay windows and wooden flooring.

Ideal for professional sharers looking for spacious living and privacy.

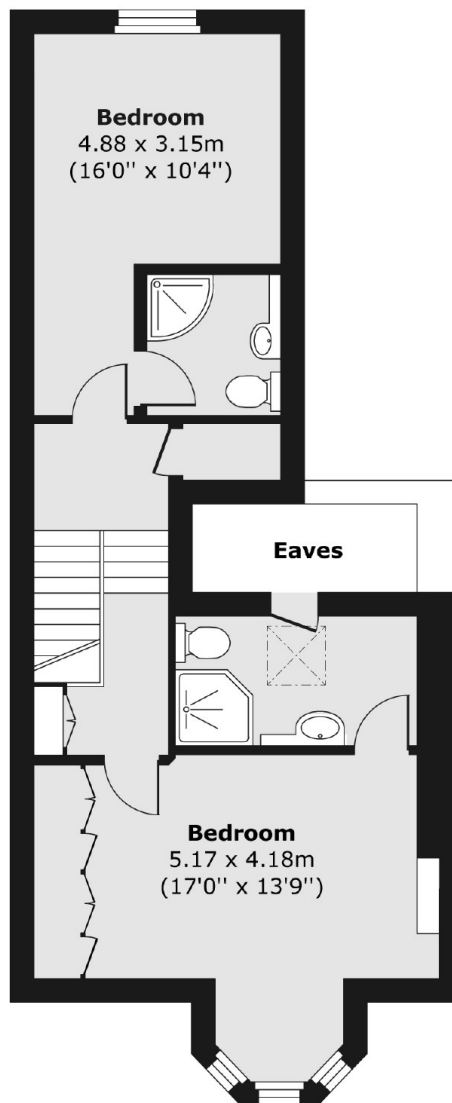


Rosebery Road, London, SW2

First Floor



Second Floor



Total area (approx.) 103.22 sq. m (1,111 sq. ft)