

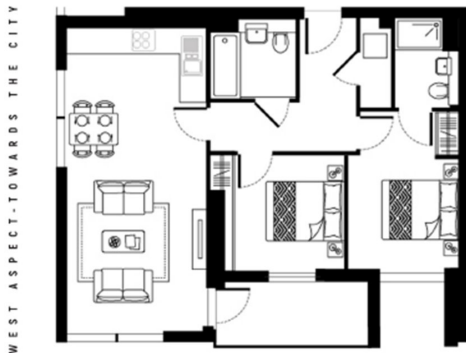


HARBOUR WAY, E14

£600,000

5th floor two bedroom two bathroom apartment with a PRIVATE balcony in Maine Tower. On-site amenities include 24 hour concierge, a residents lounge, cinema and a games room.

- Comfort Cooling
- Cinema
- Lounge
- Lease Length 989 Years
- Ground Rent £450
- Service Charge £7,014



SOUTH ASPECT - DOCKLANDS
TOWARDS GREENWICH

2 bed apartment Internal area
68.8 sq.m. 740 sq.ft.
External area
6.0 sq.m. 64 sq.ft

Whilst every attempt has been made to ensure the accuracy of the floor plan contained here, measurements of doors, windows, rooms and any other items are approximate and no responsibility is taken for any error, omission, or mis-statement. This plan is for illustrative purposes only and should be used as such by any prospective purchaser. The services, systems and appliances shown have not been tested and no guarantee as to their operability or efficiency can be given

LiFE RESIDENTIAL

36 Millharbour, London, E14

9JS

Sales: 020 3668 1033

Lettings: 020 3668 1030

Energy Rating: . We aim to make our particulars both accurate and reliable. However they are not guaranteed; nor do they form part of an offer or contract. If you require clarification on any points then please contact us, especially if you're traveling some distance to view. Please note that appliances and heating systems have not been tested and therefore no warranties can be given as to their good working order.