

3

*Wilton Street*

SW1X

*A wonderfully presented and thoughtfully restored six-bedroom Grade II Listed Georgian Belgravia townhouse, with a large roof terrace, set within the Grosvenor Estate.*

*Extending to an impressive 4471 sq ft of well-proportioned living space, the house dates back to circa 1817 and has undergone extensive refurbishment providing accommodation over five floors, with elegant rooms offering luxury finishes and sumptuous family living and entertaining space throughout.*

*With a West facing aspect to the rear of the home, a large terrace offers a rare and serene piece of private outside space, with further outside space offer from a patio.*

*Wilton Street is located between both Belgrave & Eaton Squares and ideally positioned at the end of both Upper Belgrave Street and Grosvenor Place, with easy access to the world class boutiques, shops, and eateries available across each of Knightsbridge, Sloane Street and Kings Road.*

*As a resident of the Grosvenor Estate access is available to Belgrave Square Garden and Tennis Court - some charges may apply.*



- | A beautifully flared and refurbished Grade II listed Georgian townhouse on a prestigious Belgravia address
- | Spanning circa 4,500 sq. ft
- | Six bedrooms, two reception rooms, alongside a separate study and dining room
- | A large private terrace to the rear of the property, set for alfresco dining
- | Set within the Grosvenor Estate, allowing access to Belgrave Square Gardens and tennis court (subject to availability)
- | Potential for staff quarters on the lower ground floor
- | Steps from either Sloane Street retail or Elizabeth Street's boutiques and restaurants
- | Moments from Hyde Park

Freehold  
Council Tax Band: H  
EPC Rating: D







*Gross internal area (approx.)*

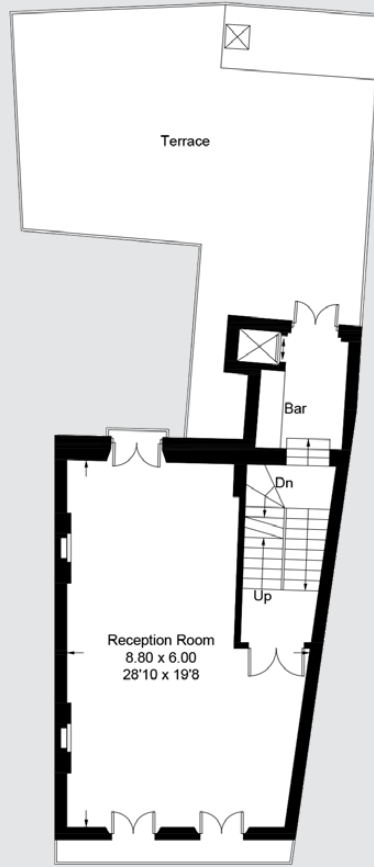
4,471 sq ft / 415.34 sq m

Plant room/Vault

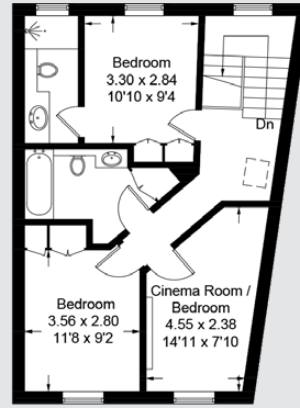
92 sq ft / 8.56 sq m

Total

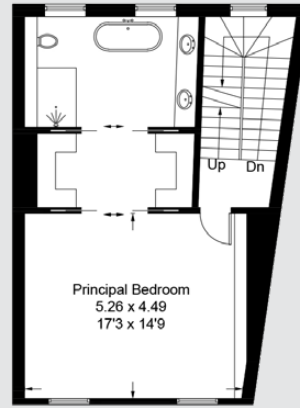
4,563 sq ft / 423.90 sq m



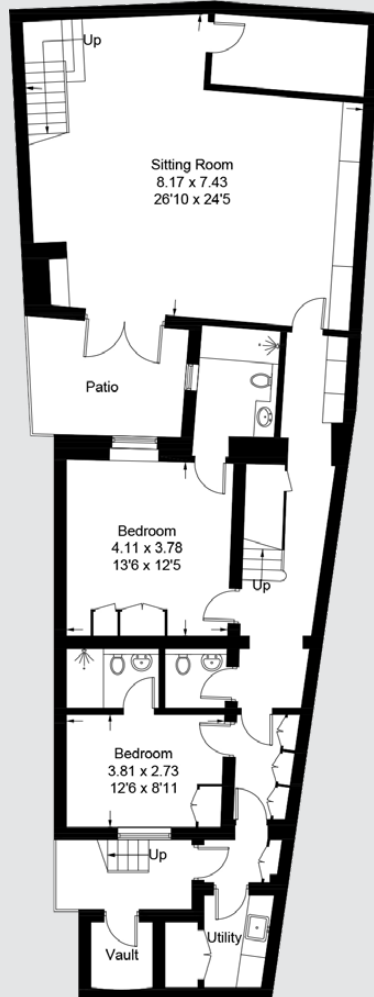
First Floor



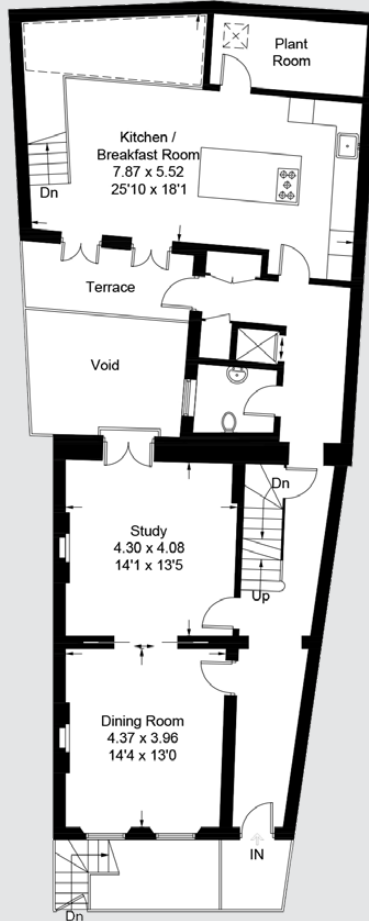
Third Floor



Second Floor



Lower Ground Floor



Ground Floor



These particulars are for general information only and do not constitute any part of an offer or contract. All statements contained therein are made without responsibility on the part of the vendors or lessors and are not to be relied upon as statement or representation of fact. Intending purchasers or lessees must satisfy themselves, by inspection, or otherwise, as to the correctness of each of the statements or dimensions contained in these particulars.

JLL Chelsea  
2 Cale Street  
London, SW3 3QU  
020 7399 5010

