

NAYLOR ROAD, PECKHAM, SE15

FREEHOLD

£975,000

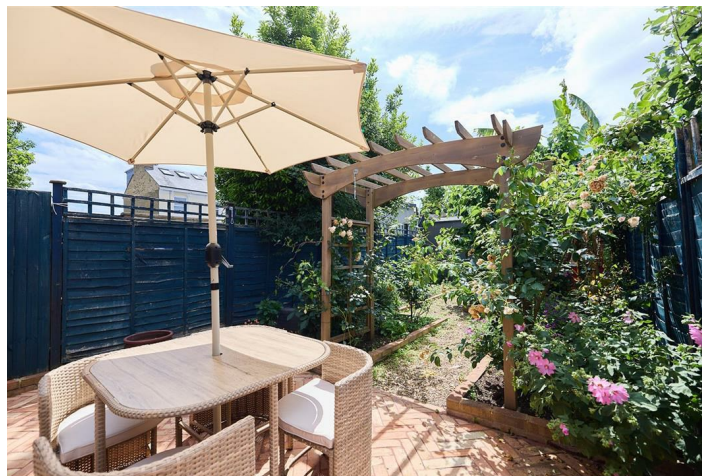


SPEC

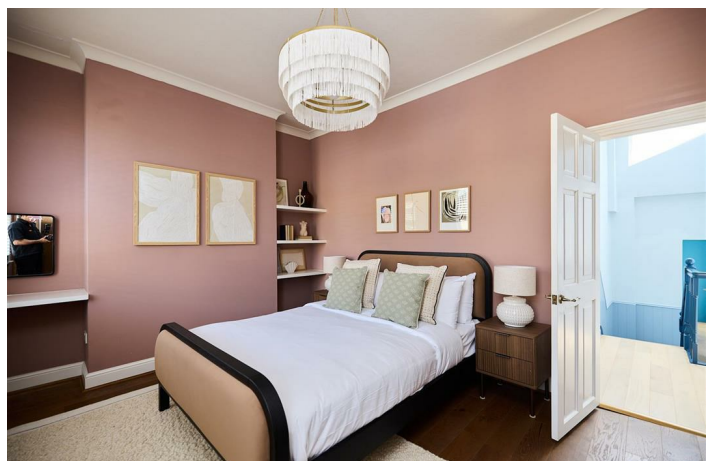
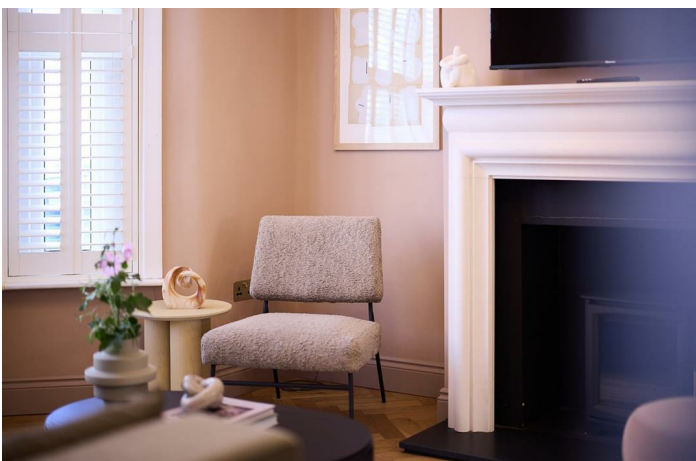
Bedrooms : 3
Receptions : 2
Bathrooms : 1

FEATURES

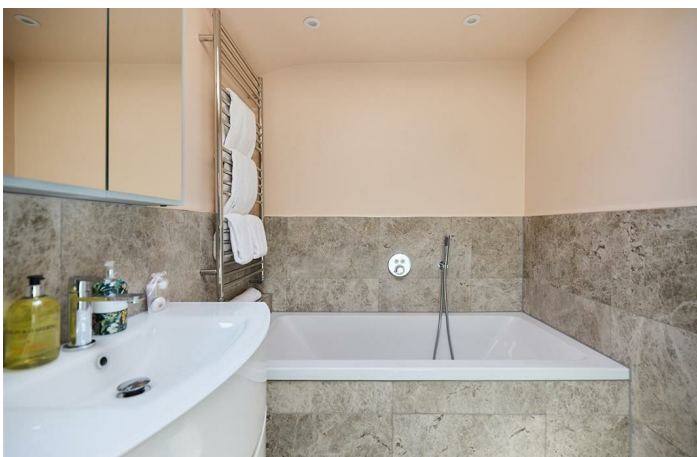
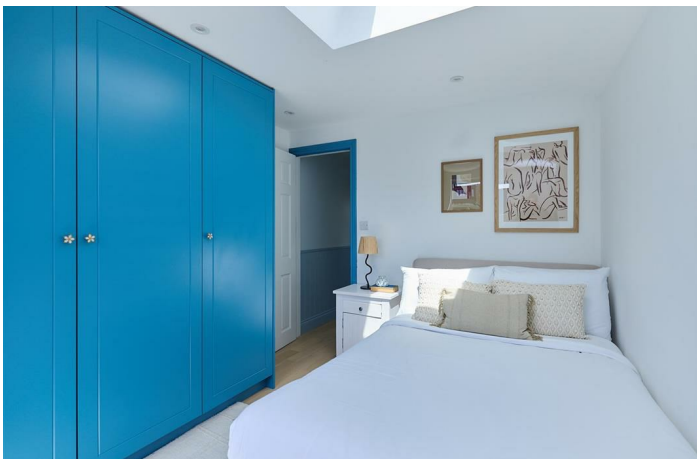
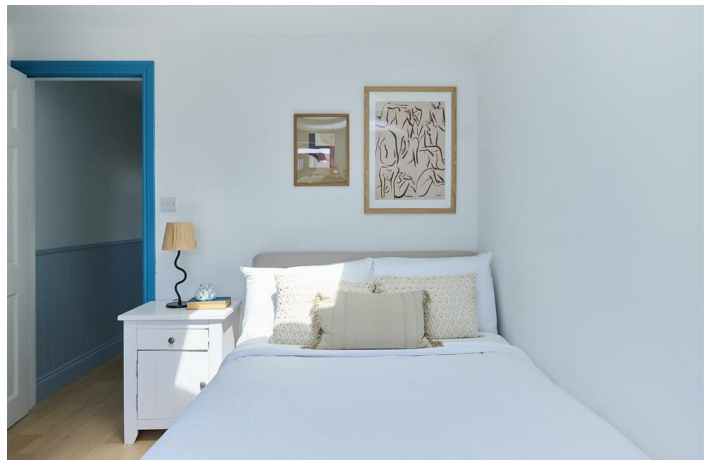
Freehold
Three Double Bedrooms
Landscaped Garden
Cellar Storage
Extended Kitchen/Diner
Utility Area and Downstairs Loo



NAYLOR ROAD SE15
FREEHOLD



NAYLOR ROAD SE15
FREEHOLD



NAYLOR ROAD SE15
FREEHOLD



NAYLOR ROAD SE15
FREEHOLD



Beautifully Renovated Three Bedroom Victorian House with Landscaped Garden in the Heart of Peckham.

This handsome three bedroom Victorian house has been beautifully reimagined to create a home that's as practical as it is stylish. Set on a sought-after residential street in the heart of Peckham, the house pairs elegant period proportions with carefully considered contemporary finishes, culminating in a spectacular kitchen and dining space beneath generous rooflights that spills effortlessly into the sunny rear garden. Every room has been thoughtfully designed, resulting in a home with real character, exceptional flow and a wonderfully calm atmosphere.

A handsome exterior leads inward to a most inviting hallway with wood paneling to dado rail level - painted blue and with matching architraves. Stunning parquet flooring continues left to a super-sized double reception with wide front aspect bay window, cornicing and contemporary mantel surrounding the stove. The walls are an earthy plaster shade and the rear of the room has low level storage units and shelving. A wide arch to the rear leads you down a step to find a neat utility area with washing machine, tumble dryer and sink. Rich brick parquet flooring continues forth to the kitchen/diner under three large skylights to a wonderful full-width space. A huge central island hosts breakfast bar seating for up to five people and houses a double butler sink. The plentiful wooden cabinets are a lovely olive green with brass fixtures. A six ring Rangemaster cooker will take care of the Christmas banquet and other appliances include integrated fridge/freezer and dishwasher. A family dining space precedes wide glass doors which open to the patio. This enjoys the same parquet flooring for a lovely flow. Beyond the patio, a rose-clad pergola supplies shade and prettiness. There's a storage shed and further al-fresco dining potential. Completing the ground floor is a handy wc and access to the storage cellar.

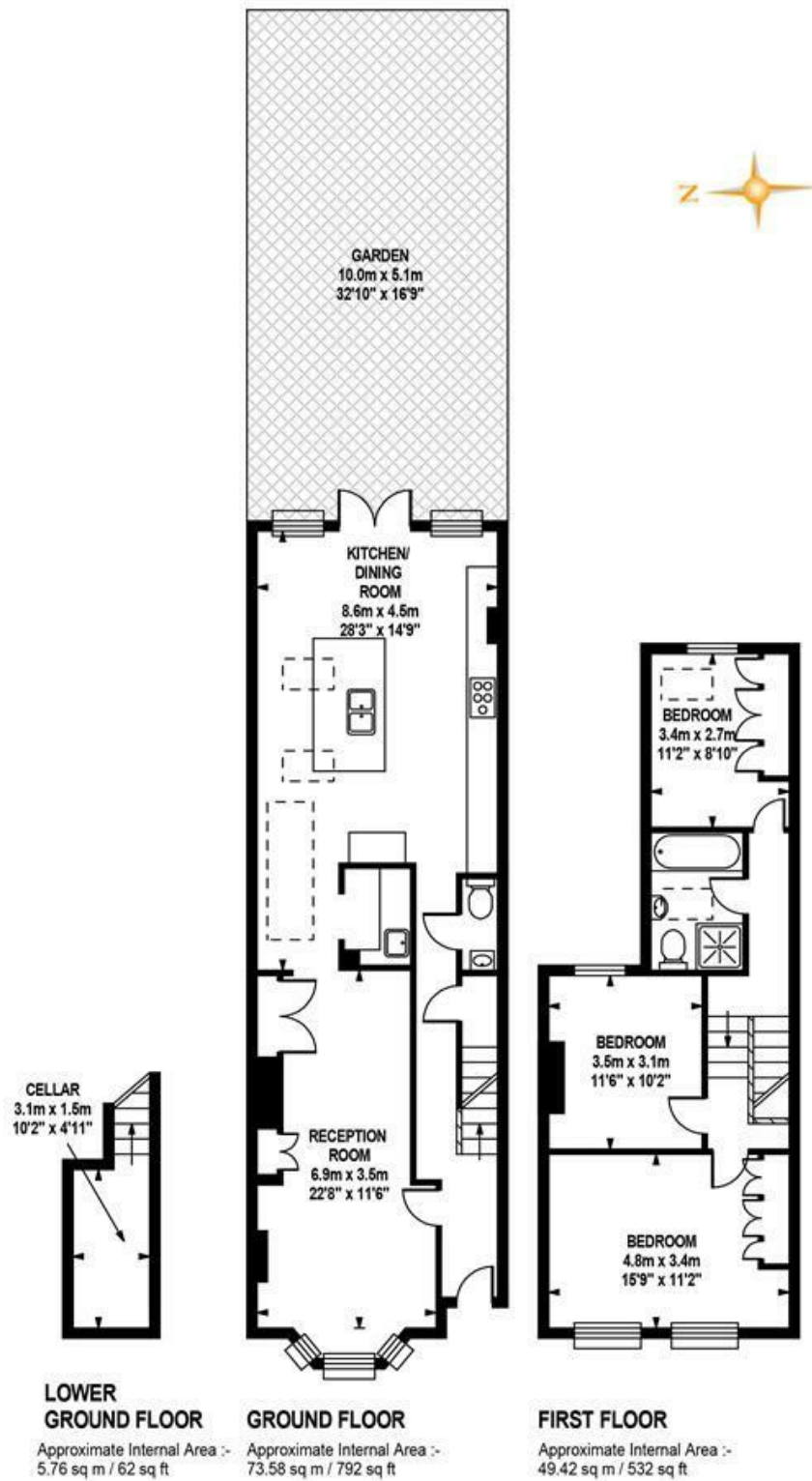
Upward to the first return you find more lovely wooden paneling along the landing. The first of your double bedrooms faces rear with a skylight and further window for a flood of natural light. There's a wall of substantial storage - painted the same lovely blue as the skirting boards. Next to this is a sumptuous bath with super slick tiling, skylight, walk-in shower and bath. Upward a mini-flight you find a wonderful, front-facing master bedroom with rich wooden flooring and matching bespoke wardrobes. Louvered blinds, simple coving and built-in shelving add to the charm. Last but not least is the third bedroom, another rear facing double with rich blue/green walls and a peaceful aspect.

Queens Road Peckham station is just a short walk away, offering fast services to London Bridge in around 10 minutes, alongside Windrush Line (London Overground) connections to Canada Water, Shoreditch, Highbury & Islington and Clapham Junction. Peckham Rye station is also nearby, with additional services to Victoria, Blackfriars and St Pancras.

The local area is packed with independent cafés, restaurants and bars. Grab a coffee from Blackbird Bakery, enjoy dinner at Kudu or Peckham Cellars, or spend a summer evening at Frank's Café. The Prince of Peckham, Beer Rebellion and Peckham Levels are all close by, while Peckham Pulse Leisure Centre, Burgess Park and Peckham Rye Park & Common provide excellent fitness and green space. It's easy to see why this corner of SE15 remains one of south London's most sought-after neighbourhoods.

Tenure: Freehold

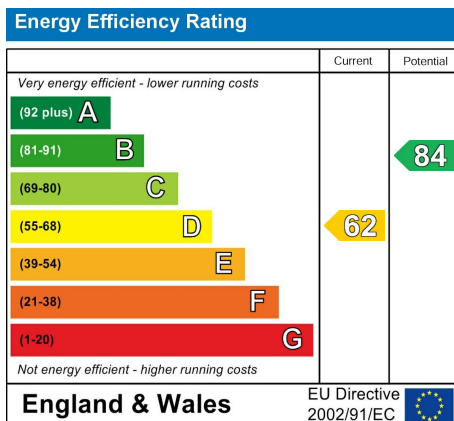
Council Tax Band: D



TOTAL APPROX.FLOOR AREA

Approximate Internal Area :- 128.75sq m / 1386 sq ft
Measurements for guidance only / not to scale

NAYLOR ROAD SE15
FREEHOLD



All information supplied should be checked by your solicitor prior to exchange of contracts. Lease details, measurements, floorplans and photographs are displayed for guide purposes only. We have not carried out a structural survey and the services, appliances and specific settings have not been tested.

