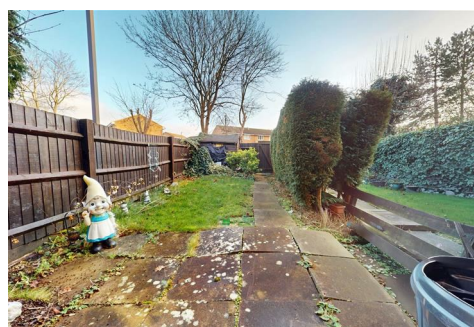




# Cauldwell

PROPERTY SERVICES



## 24 Sharman Walk, Milton Keynes, MK13 9EE

**£250,000**

Offered to the market with no onward chain, this two-bedroom end-of-terrace home is conveniently located in Bradwell, Milton Keynes, positioned opposite attractive green space and within easy reach of the city centre and mainline train station.

The property would benefit from some general updating, presenting an excellent opportunity for buyers to personalise and add value. The accommodation comprises, on the ground floor, a central entrance hall providing access to a comfortable living room and a kitchen/dining room, offering good space for everyday living.

To the first floor are two double bedrooms, along with a bathroom which has had recent works carried out, providing a more modern finish.

Externally, the property enjoys both a front garden and an enclosed rear garden, along with off-road parking to the rear. An ideal purchase for first-time buyers, investors, or those looking for a well-located home with scope for improvement in a popular and well-connected area.

Energy rating: tbc  
Council tax band: B



## **ENTRANCE HALL**

Composite door to side. Doors to kitchen/diner, living room and understairs cupboard.

## **LIVING ROOM 12'6" x 12'4" (3.83 x 3.76)**

Double glazed window to front. Radiator. Stairs to first floor landing. Television point.

## **KITCHEN/DINER 12'4" x 8'10" (3.77 x 2.71)**

Double glazed windows and door to rear. Range of wall and base units with worksurfaces incorporating sink drainer unit. Electric oven and hob with extractor hood over. Plumbing for washing machine. Wall mounted central heating boiler. Space for fridge freezer. Radiator.

## **FIRST FLOOR LANDING**

Stairs from living room. Double glazed window to side. Access to loft space.

## **BEDROOM ONE 12'3" x 8'11" (3.75 x 2.73)**

Double glazed window to rear. Radiator. Fitted wardrobes. Television point.

## **BEDROOM TWO 12'4" x 7'4" (3.78 x 2.26)**

Double glazed window to front. Radiator.

## **BATHROOM**

Three piece suite comprising shower cubicle with electric shower, wash hand basin in vanity surround and close coupled wc. Radiator. Airing cupboard. Extractor fan.

## **FRONT GARDEN**

Laid to lawn with hedge border.

## **REAR GARDEN**

Laid to lawn with rear width patio area and hedging. Gated access to rear. Off road parking to rear.

All measurements are approximate.

The area measurements are taken from the government EPC register.

The mention of appliances and/or services within these sales particulars does not imply that they are in full efficient working order. Please note that any services, heating systems or appliances have not been tested and no warranty can be given or implied as to their working order. **MORTGAGE & FINANCIAL** - The Mortgage Store can provide you with up to the minute information on all available rates. To arrange an appointment, telephone this office **YOUR HOME IS AT RISK IF YOU DO NOT KEEP UP REPAYMENTS ON A MORTGAGE OR OTHER LOANS SECURED ON IT**. Full quotation available on request. A suitable life policy may be required. Loans subject to status. Minimum age 18.

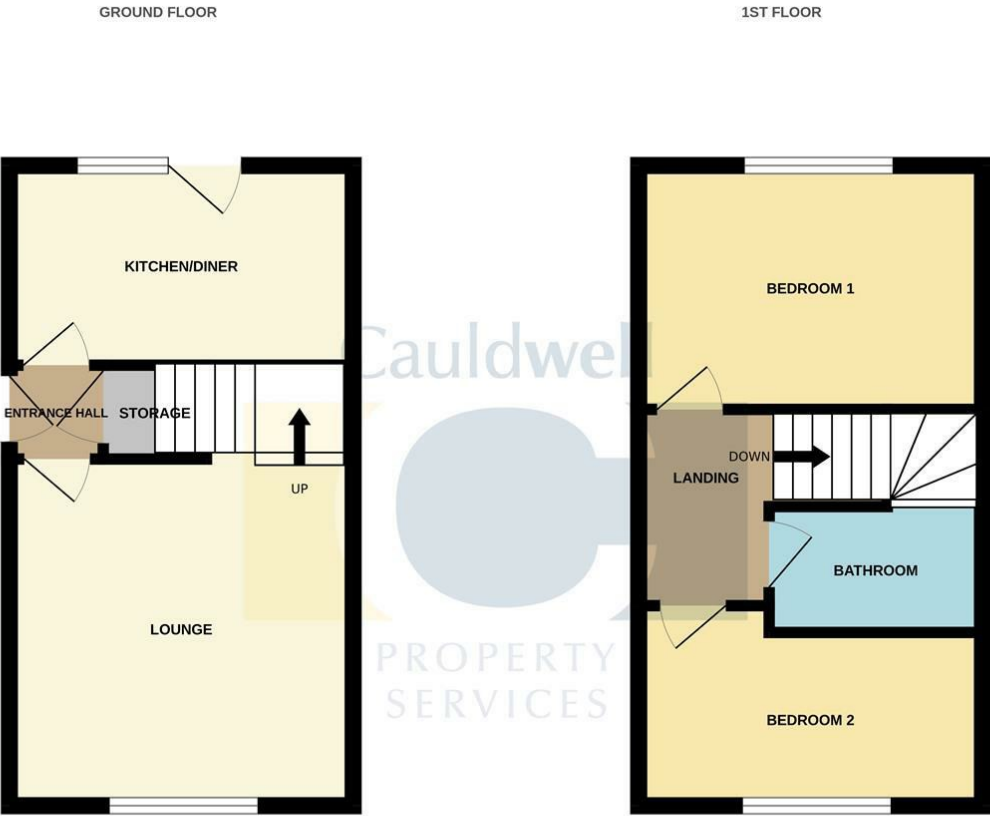
The above details have been submitted to our clients but at the moment have not been approved by them and we therefore cannot guarantee their accuracy and they are distributed on this basis.

Please ensure that you have a copy of our approved details before committing yourself to any expense.

We routinely refer customers to Franklins solicitors, Gough Thorne and The Mortgage Store. It is your decision whether you choose to deal with them, in making that decision, you should know that we receive a referral fee in the region of £80 to £250 for recommending you to them

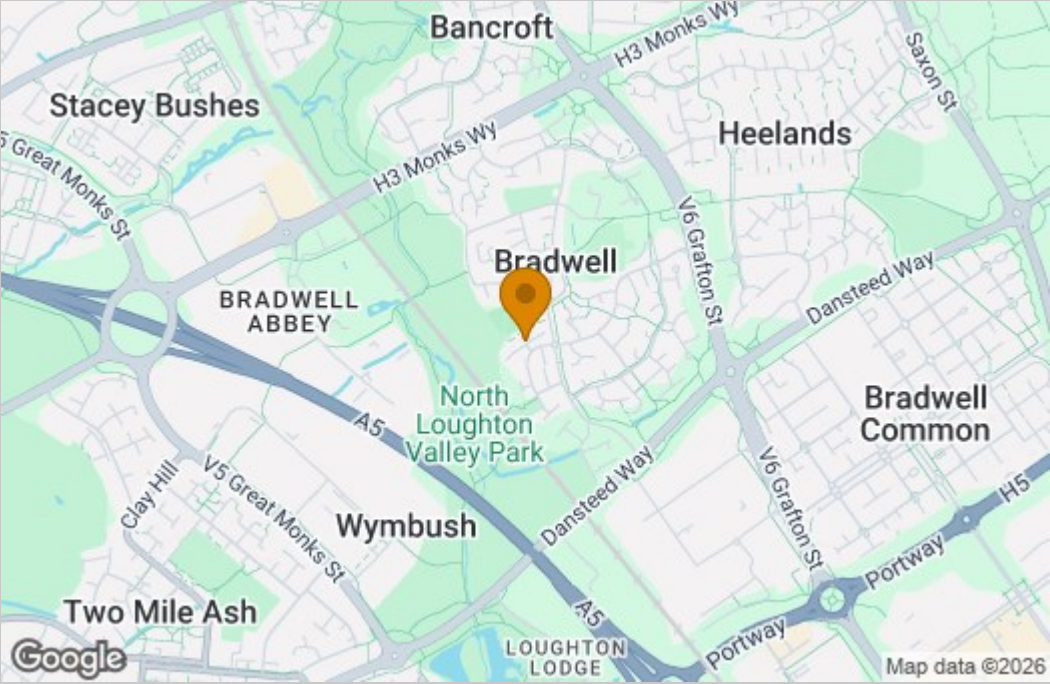
All clients are subject to identity and source of funds checks. We use a third party company to complete these for us. The charge is £60 inc vat per transaction which requires to be paid at your earliest convenience once your offer has been accepted, this enables us to conduct the verification checks we are obliged to do as per HMRC Anti Money Laundering guidelines.

Floor Plan

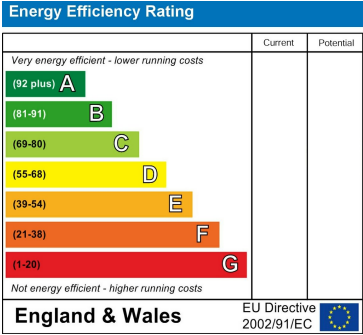


Whilst every attempt has been made to ensure the accuracy of the floorplan contained here, measurements of doors, windows, rooms and any other items are approximate and no responsibility is taken for any error, omission or mis-statement. This plan is for illustrative purposes only and should be used as such by any prospective purchaser. The services, systems and appliances shown have not been tested and no guarantee as to their operability or efficiency can be given.  
Made with Metropix ©2026

Area Map



Energy Efficiency Graph



These particulars, whilst believed to be accurate are set out as a general outline only for guidance and do not constitute any part of an offer or contract. Intending purchasers should not rely on them as statements of representation of fact, but must satisfy themselves by inspection or otherwise as to their accuracy. No person in this firms employment has the authority to make or give any representation or warranty in respect of the property.