

INTRODUCING

Mayfair Court, Watford WD18 7GA

2 Bedroom Apartment - Purpose Built for sale

£340,000

Price

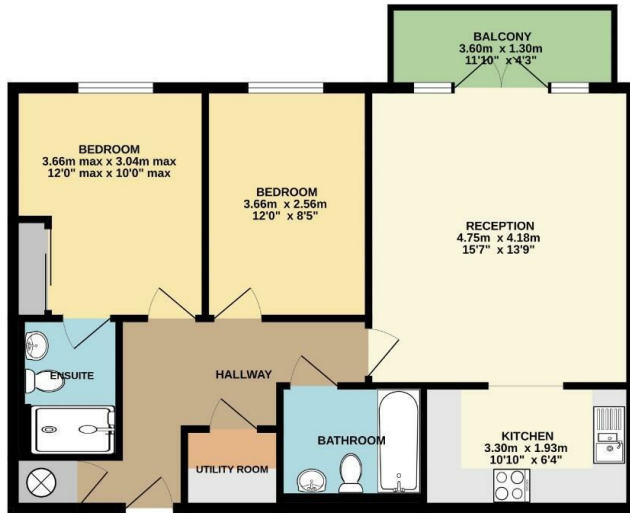


2 Bedrooms/2 Bathrooms EPC Rating: B

- Well Presented 2nd Floor Apartment
- Re-furbished Kitchen
- 2nd Bedroom
- Utility Room/Area
- Popular Cul-De-Sac Location
- Lounge/Diner With Balcony
- Master Bedroom With En-Suite Shower Room
- Family Bathroom
- Council Tax Band D
- Undercroft Parking Space

Floor Plan

SECOND FLOOR
67.2 sq.m. (723 sq.ft.) approx.



MIXFAIR COURT
TOTAL FLOOR AREA: 67.2 sq.m. (723 sq.ft.) approx.
While every effort has been made to ensure the accuracy of the floorplan contained here, measurements of flats, corridors, balconies and any other areas are approximate and no responsibility is taken for any error, omission or misstatement. This plan is for illustrative purposes only and should be used as such by any prospective purchaser. The services, systems and appliances shown here are not intended and no guarantee as to their quantity or efficiency can be given. Made with Floorplan (2022)

Map



Energy Efficiency

Energy Efficiency Rating		Current	Potential
Very energy efficient - lower running costs			
(92 plus) A			
(81-91) B		82	83
(69-80) C			
(55-68) D			
(39-54) E			
(21-38) F			
(1-20) G			
Not energy efficient - higher running costs			
England & Wales		EU Directive 2002/91/EC	



These particulars, whilst believed to be accurate are set out as a general outline only for guidance and do not constitute any part of an offer or contract. Intending purchasers should not rely on them as statements of representation of fact, but must satisfy themselves by inspection or otherwise as to their accuracy. No person in this firm's employment has the authority to make or give any representation or warranty in respect of the property.