



GUIDE PRICE OF £245,000 - £255,000

Marldon Grove,
Marldon, Paignton,
TQ3 1PN

A two bedroom detached bungalow located within a private cul-de-sac in the highly desirable location of Marldon. The bungalow offers great potential and is a blank canvas for someone looking to add their personal touch to a home. The property comprises of an entryway, a spacious living room, kitchen/breakfast room, two bedrooms, family bathroom, rear gardens and allocated parking for 2 vehicles. The property is ideally located within easy reach of Marldon primary, local shops, bus links, the ring road and more. The property is being offered for sale with no onward chain!



ENTRANCE A wooden glazed front door opens into a welcoming entrance hall featuring overhead lighting, a loft hatch, doors leading to the adjoining rooms and a convenient storage cupboard.

KITCHEN This generously sized kitchen/breakfast room offers a comprehensive range of wall, base and drawer units topped with roll edged work surfaces. Included is a 1 bowl stainless steel sink with drainer, an electric oven with grill, a four ring gas hob with extractor hood above and space with plumbing for both a washing machine and a fridge freezer. There is ample room for a breakfast table, along with a built in cupboard housing the boiler. A uPVC double glazed window and gas central heated radiator.

LIVING ROOM A spacious living room overlooking the front aspect of the property. Features include a charming fireplace, a deep fitted storage cupboard, TV and internet points, uPVC double glazed windows and a gas central heated radiator.

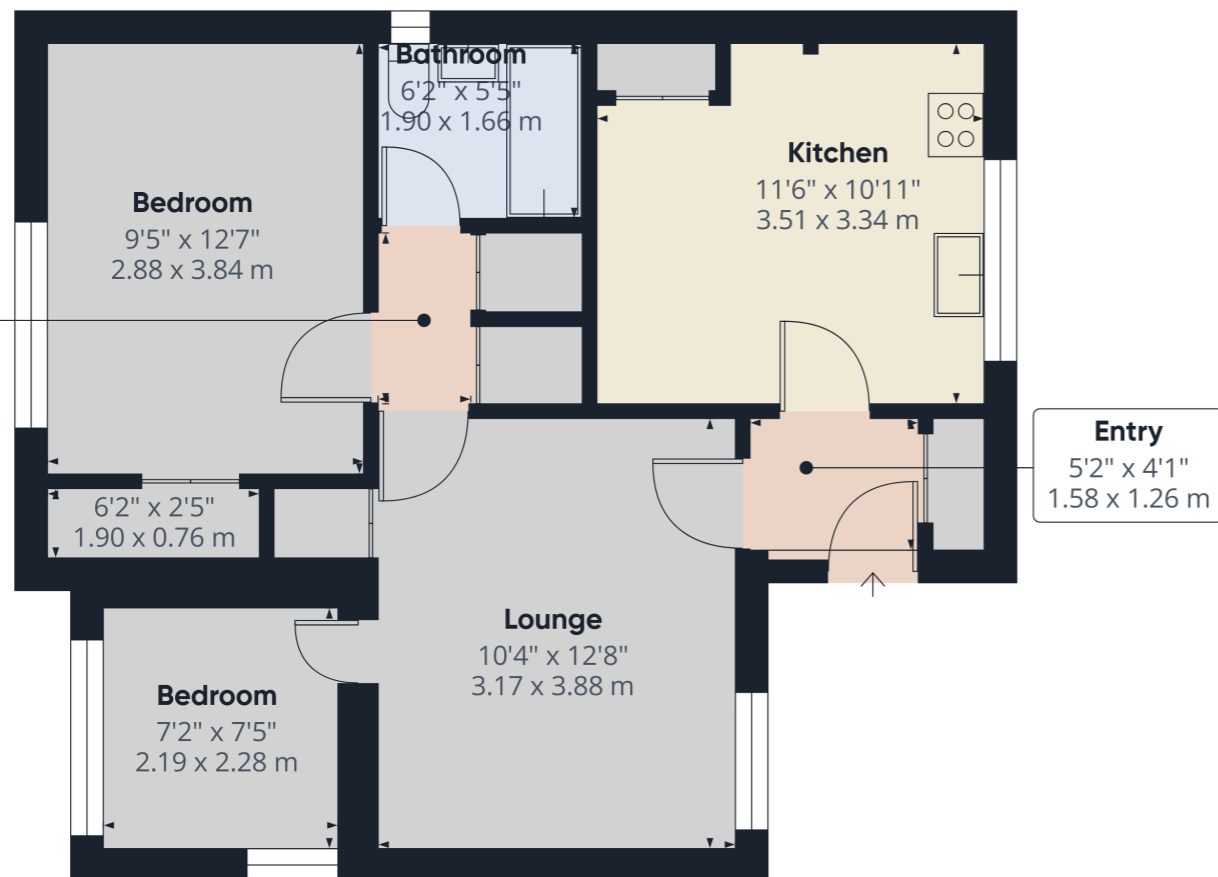
BEDROOM ONE A generously proportioned master bedroom positioned to the rear of the property enjoying impressive countryside views. A deep fitted wardrobe, uPVC double glazed windows and a gas central heated radiator.

BEDROOM TWO A versatile single bedroom ideal as a guest room, home office, study or hobby space. It features a uPVC double glazed window and a uPVC double glazed door opening directly onto the rear garden, plus a gas central heated radiator.

BATHROOM A three piece suite comprising a low level WC, pedestal wash basin and a panelled bath with shower attachments. Tiled walls, an obscure uPVC double glazed window and a gas central heated radiator.

OUTSIDE The south west facing rear garden boasts a patio ideal for alfresco dining, a neatly lawned area, mature shrubs and plants and picturesque views across the adjoining donkey field.

PARKING The property further benefits from allocated parking for two vehicles.



Address 'Marldon Grove, Marldon, Paignton, TQ3 1PN'

Tenure 'Freehold'

Council Tax Band 'C'

EPC Rating '64 | D'

Taylor's Estate Agents
24-26 Hyde Road
Paignton
Devon
Tq4 5by