

# KEYSTONE

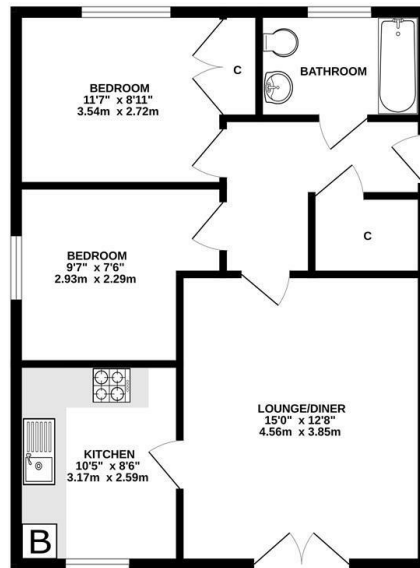


Firmin Close, Ipswich, IP1 2BF

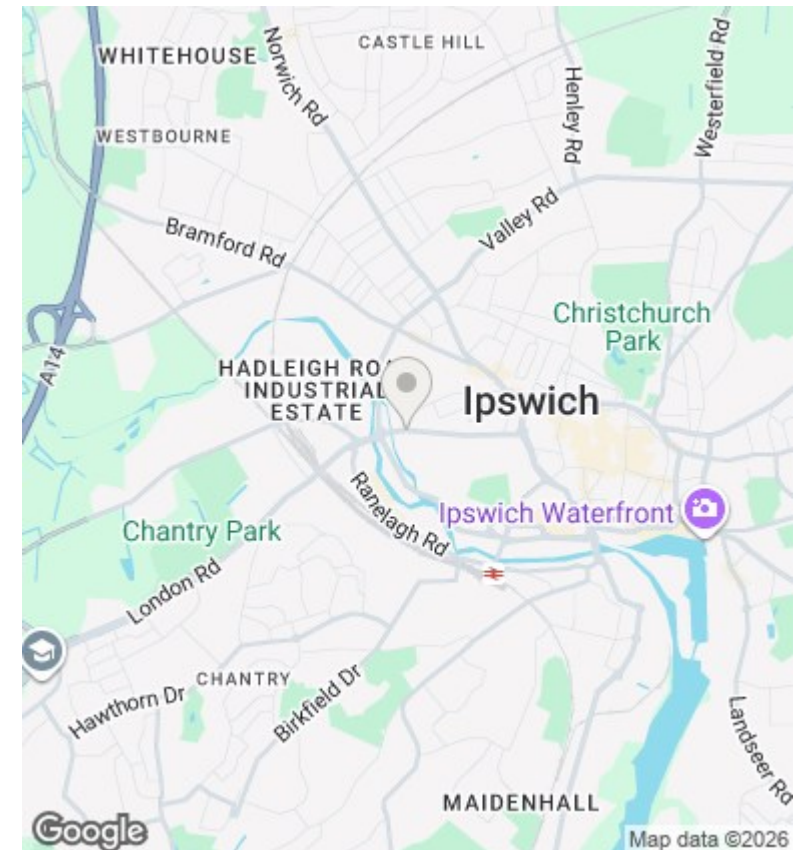
£895 PCM

- Part furnished two bed apartment
- Lounge
- Gas central heating
- Close to Ipswich town centre
- Fitted kitchen & appliances
- Parking
- Entrance hall
- Bathroom with a shower

GROUND FLOOR  
605 sq.ft. (56.2 sq.m.) approx.



TOTAL FLOOR AREA: 605 sq.ft. (56.2 sq.m.) approx.  
While every attempt has been made to ensure the accuracy of the foregoing contained floor measurements of doors, windows, rooms and any other items are approximate and no responsibility is taken for any error, omission or misstatement. This plan is for illustrative purposes only and should be used as a guide only for prospective purchasers. The services, systems and appliances shown have not been tested and no guarantee as to their operation or efficiency can be given.  
Made with letroplan 12/02/25



## Directions

## Viewings

Viewings by arrangement only. Call 01473 221 399 to make an appointment.

EPC Rating:  
C

Energy Efficiency Rating		
	Current	Potential
Very energy efficient - lower running costs		
(92-plus) A		
(81-91) B		
(69-80) C	80	80
(55-68) D		
(39-54) E		
(21-38) F		
(1-20) G		
Not energy efficient - higher running costs		
England & Wales	EU Directive 2002/91/EC	