



66 Sappi Road, Glenrothes - KY7 6ZJ

Glenrothes

Offers Over £220,000





home sweet home
estate agents
your local property experts



66 Sappi Road

Glenrothes, Glenrothes

New for sale a Stunning modernised/ upgraded from standard design ' The Bothwell' Mid Terraced Townhouse by Persimmon Homes 2019. This superb family home is finished to a high standard with many eye-catching features in popular location.

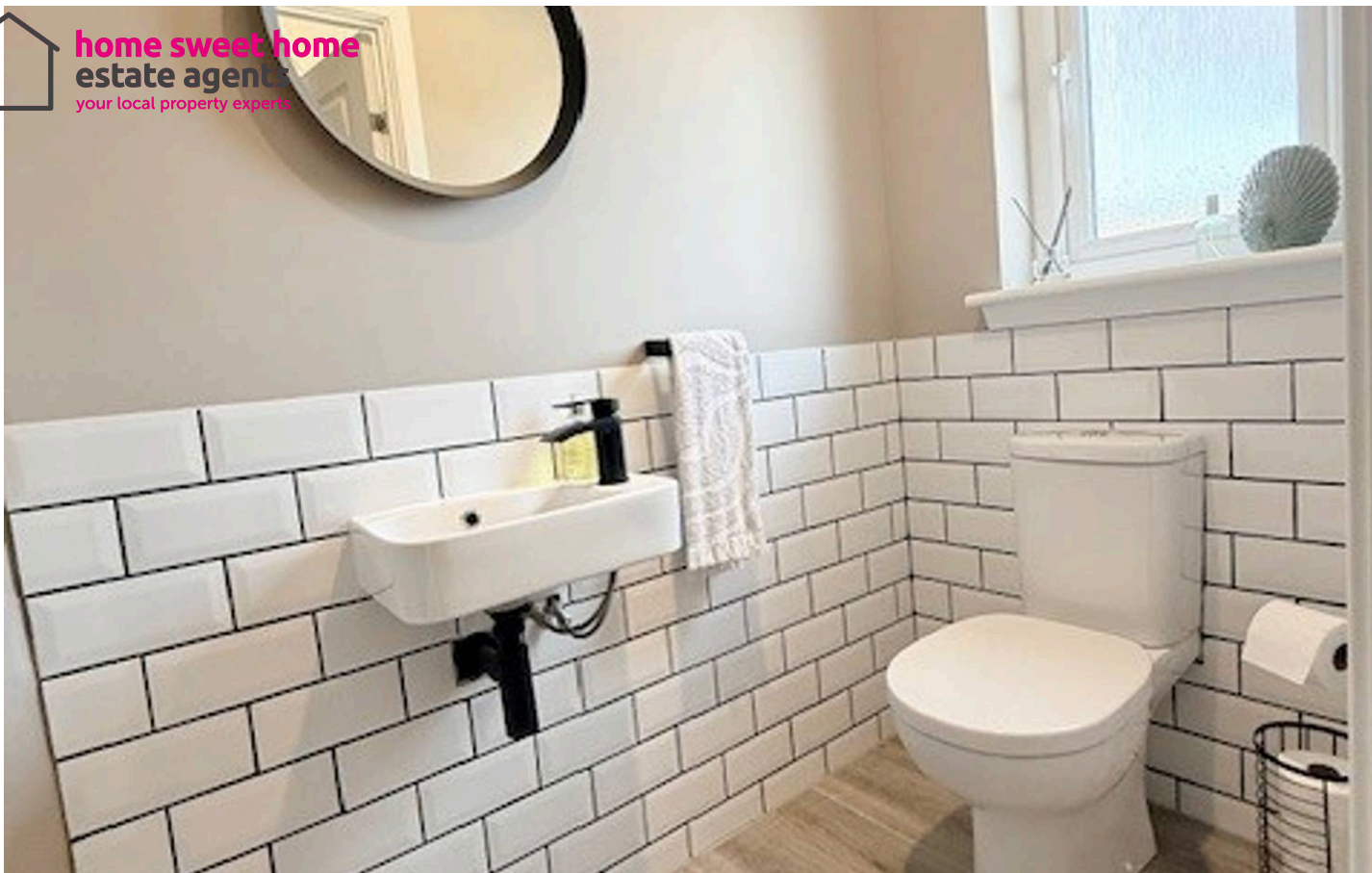
Council Tax band: D

Tenure: Freehold

EPC Energy Efficiency Rating: B

EPC Environmental Impact Rating: B

- STUNNING UPDATED MODERN MID TERRACED TOWNHOUSE
- 4 BEDROOMS 3 DOUBLE MASTER EN-SUITE
- LOUNGE WITH MEDIA WALL
- MODERN DINING KITCHEN & APPLIANCES
- UPDATED FAMILY BATHROOM & SEP WC
- DG- GCH - EPC B - HOME REPORT £225,000
- 2 UNALLOCATED PARKING BAYS
- LANDSCAPED ENCLOSED GARDEN
- VIEWING HIGHLY RECOMMENDED
- MANY EYE CATCHING UPGRADES/ FEATURES
- PERFECT FOR GROWING FAMILIES

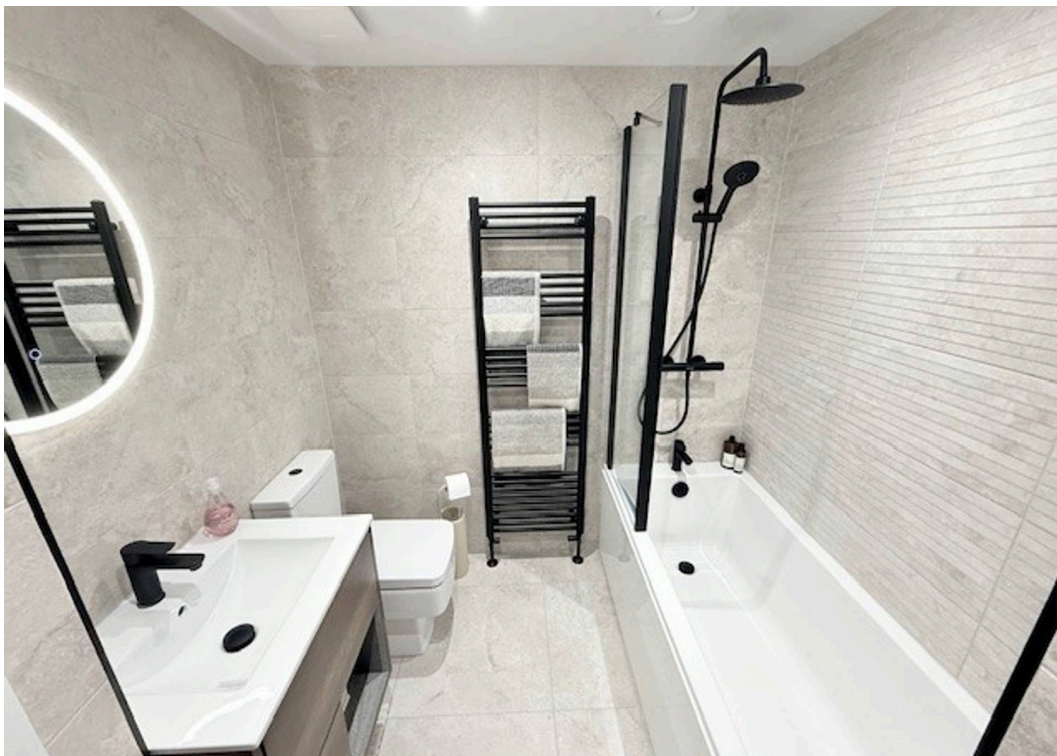


GARDEN

OFF STREET

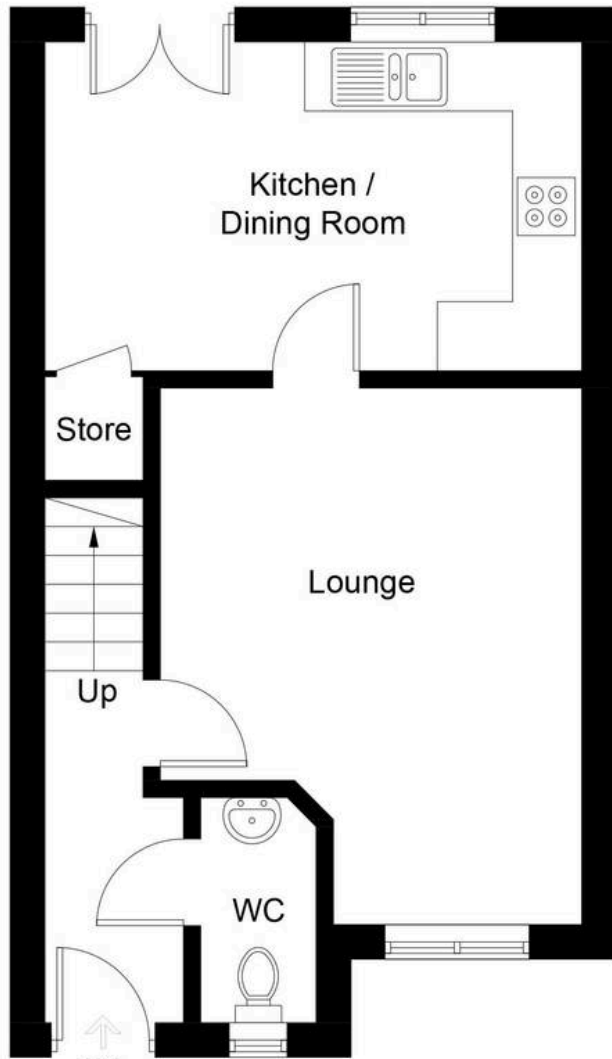
2 Parking Spaces



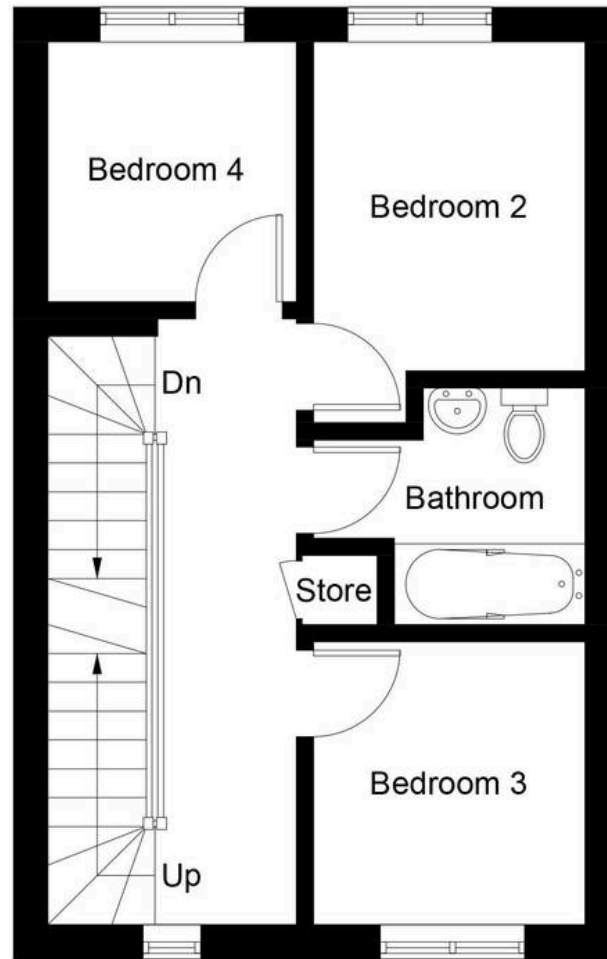


Energy Efficiency Rating		Current	Potential
<i>Very energy efficient - lower running costs</i>			
(92+)	A		
(81-91)	B	82	82
(69-80)	C		
(55-68)	D		
(39-54)	E		
(21-38)	F		
(1-20)	G		
<i>Not energy efficient - higher running costs</i>			
England, Scotland & Wales		EU Directive 2002/91/EC	

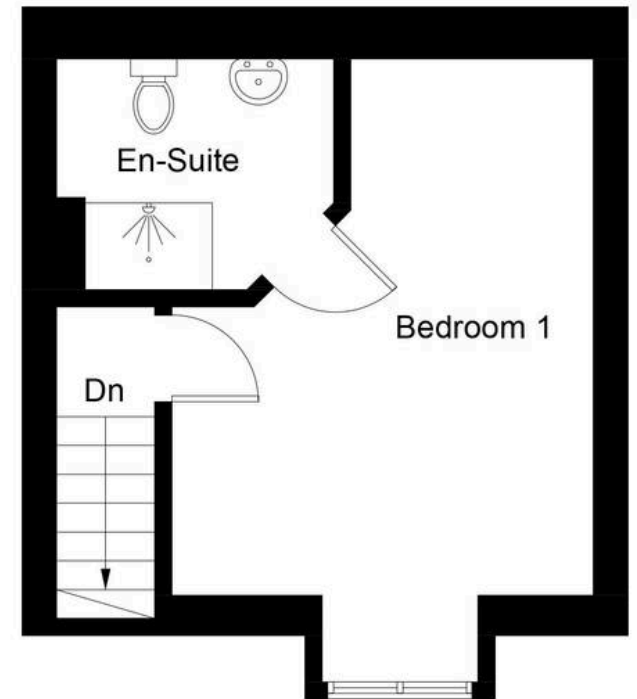
Environmental Impact (CO ₂) Rating		
	Current	Potential
<i>Very environmentally friendly - lower CO₂ emissions</i>		
(92+)	A	
(81-91)	B	85
(69-80)	C	85
(55-68)	D	
(39-54)	E	
(21-38)	F	
(1-20)	G	
<i>Not environmentally friendly - higher CO₂ emissions</i>		
England, Scotland & Wales		EU Directive 2002/91/EC



Ground Floor



First Floor



Second Floor

Illustration for identification purposes only, measurements are approximate, not to scale. Fourlabs.co © (ID1290160)