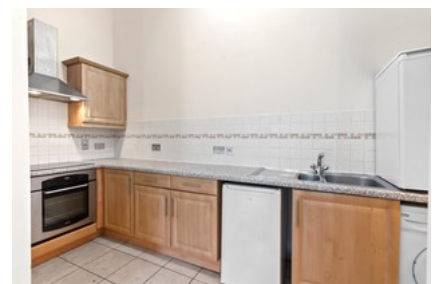
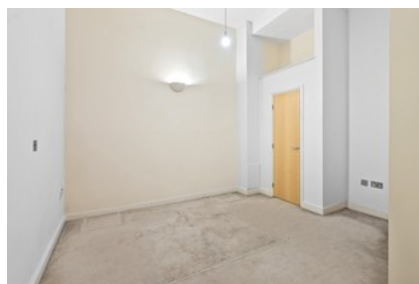




## Sidbury House Worcester



- ✓ Ideal For First Time Buyer Or Investment
- ✓ Two (2) Bedroom Apartment
- ✓ Currently Let = Annual Rental Income Of 9,600
- ✓ Open Lounge & Kitchen
- ✓ Lots Of Practical Storage Capacity
- ✓ High Ceiling Home
- ✓ Walking Distance From Worcester's Finest Amenities
- ✓ Electric Heating Only
- ✓ City Centre Living
- ✓ Epc Rating = C

Guide Price **£135,000**

Bedroom  2 Bathroom  1 Reception  1