



OVER 60?

Secure this property
for up to **59% less!**

Price

£300,000

Leasehold

3x  1x  1x 

**Maple Court, Spring
Close, Dagenham, Essex,
RM8**

 **DOUGLAS
ALLEN**
Helping you move forwards



Main features

- Spacious second floor purpose built flat
- Large living room and modern fitted kitchen
- Newly fitted bathroom
- Chain Free & Long Lease
- Close to Chadwell Heath station/Elizabeth Line
- Resident Permit Parking

Accommodation

SECOND FLOOR

Entrance Hall

Lounge: 14'5 x 11'6 (4.40m x 3.51m)

Kitchen: 11'3 x 7'8 (3.43m x 2.34m)

Bedroom 1: 9'4 x 7'9 (2.85m x 2.36m)

Bedroom 2: 9'5 x 6'8 (2.87m x 2.03m)

Bedroom 3: 11'0 x 9'5 (3.36m x 2.87m)

Bathroom

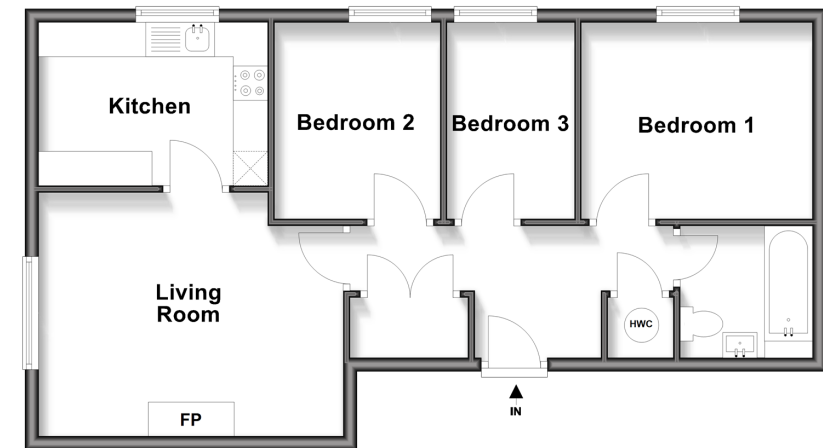
OUTSIDE

Residents Permit Parking

Communal Garden

Second Floor

Approx. 60.3 sq. metres (648.6 sq. feet)



Call Chadwell Heath - 020 8597 0043 ■ douglasallen.co.uk

- A private rental licensing scheme applies to some properties in this area, please check with the Local Authority before proceeding
- Legal advice should be taken to verify fixtures/fittings, planning, alterations and/or lease details
- Appliances & services are untested, dimensions are approximate and floor plans are not to scale
- Through a Homewise Home For Life Plan people aged 60+ can secure this property for up to 59% less, by purchasing a Lifetime Lease



50714181/20260117/CN/MH