



30 Hall Park Rise Leeds



3 Bedroom Bungalow - Dormer Semi Detached £350,000

69 Lower Wortley Road
Wortley
Leeds
West Yorkshire
LS12 4SL
Tel: 0113 231 1033
Fax: 0113 203 8333

Web Site
www.kathwells.com

email
sales@kathwells.com

30 Hall Park Rise, Horsforth, Leeds, LS18 5LW

GROUND FLOOR:

Entrance Hallway:



Access via a part glazed front entrance door, double glazed window, central heating radiator, stairs rising to the first floor accommodation

Fitted Kitchen:



Part glazed side door, double glazed window, a range of fitted wall, drawer & base units, work surfaces, gas hob, built under oven / grill, plumbing for an automatic washing machine, inset sink & drainer, plumbing for an automatic washing machine, ample space for a fridge / freezer

Living Room / Dining room:



Double glazed French patio doors, double glazed window, television point, central heating radiators, an inset fire place & heart, ample space for a range of dining & living room furniture

FIRST FLOOR:

Landing:

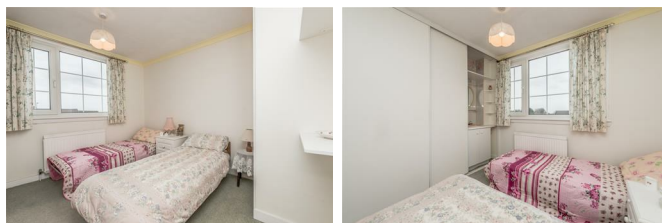
Double glazed window, access to first floor accommodation & loft space

Bedroom One:



Double glazed window, central heating radiator, built in wardrobes

Bedroom Two:



Double glazed window, central heating heating radiator, wash basin set into a vanity unit, built in / fitted wardrobes

Bedroom Three:



Double glazed window, central heating radiator, storage cupboard

Bathroom / WC:



Double glazed window, panelled bath with an electric shower above, low flush WC, wash basin, central heating radiator

TO THE OUTSIDE:



Gradens:



The front garden is a great size and is laid to lawn, to the side of the property there is another garden space which is also laid to lawn and enclosed & the rear garden has a patio / seating area & has access to the garage.

Off Street Parking / Driveway / Single Garage:



A driveway provides useful off street parking for a family sized car. A single garage provides additional parking & a useful outside storage space

Council Tax Band / EPC Rating:

Council Tax Band: D / EPC Rating: D

EPC Link:

<https://find-energy-certificate.service.gov.uk/energy-certificate/4906-2206-1002-0304-7002>

Energy Efficiency Rating		Current	Potential
Very energy efficient - lower running costs			
(92 plus) A			
(81-91) B			79
(69-80) C			
(55-68) D		65	
(39-54) E			
(21-38) F			
(1-20) G			
Not energy efficient - higher running costs			
England & Wales		EU Directive 2002/91/EC	

Ground Floor



First Floor

