

The Ashtons logo is displayed in white text on a dark blue rectangular background in the top right corner. The word "Ashtons" is written in a clean, sans-serif font, with a green leaf-like graphic element integrated into the letter 'A'.

Ashtons



3B Village Street Rawcliffe YO30 5TZ

£950 PCM

2



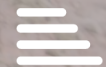
1



1



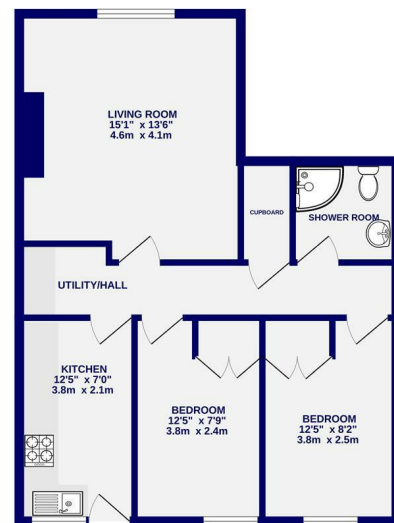
C



A two bedroom ground floor flat located at the end of Manor Lane in Rawcliffe with good access to the outer ring road and local amenities. Offered unfurnished. The property comprises of modern kitchen with electric oven, gas hob, fridge, utility area with washing machine; spacious living room; two double bedrooms with wardrobes; modern shower room.

Available Now / 6+ Month Tenancy / Deposit £1050 / Council Tax Band A / EPC Rating C / Two Parking Spaces at Rear

GROUND FLOOR
617 sq.ft. (57.3 sq.m.) approx.



TOTAL FLOOR AREA : 617 sq.ft. (57.3 sq.m.) approx.
While every attempt has been made to ensure the accuracy of the floorplan, measurements of rooms and any other areas are approximate. It is advised that the plan for dimensions will vary and of the overall floor area and is not intended to be used as a guide for any prospective purchaser. The services, systems and appliances shown have not been tested and are guaranteed as to their operation.
Made with Mapbox 12/20/20



Ashtons Lettings



01904 731404



lettings@ashtonsnet.com

