



## 88 Salesbury Drive, Billericay – CM11 2JJ

£375,000 Freehold

A spacious three bedroom terraced house is offered with **NO ONWARD CHAIN**, making it an ideal choice for first time buyers, families or professionals seeking a seamless move. Block paved driveway to the front, providing off-street parking for two cars and power to the front of the property already in place should you wish to install an electric car charger. The stylish Shaker style kitchen is beautifully appointed with integrated appliances including a fridge freezer, dishwasher, eye-level electric oven, combination microwave, and an electric hob with extractor over.

Council Tax band: C ~ EPC Energy Efficiency Rating: D



**tyler estates**

01277 626181

[www.tylerestates.co.uk](http://www.tylerestates.co.uk)





Entrance Hall

Inner Hall

Lounge / Diner

15' 11" x 13' 7" (4.85m x 4.14m)

Kitchen

10' 4" x 7' 9" (3.16m x 2.36m)

Landing

Bedroom One

14' 0" x 9' 8" (4.26m x 2.94m)

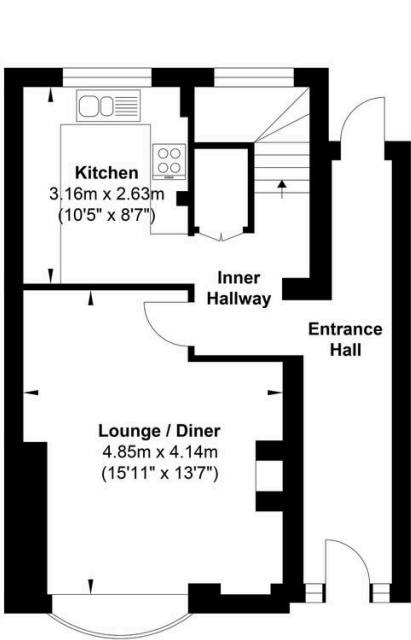
Bedroom Two

11' 2" x 9' 4" (3.41m x 2.85m)

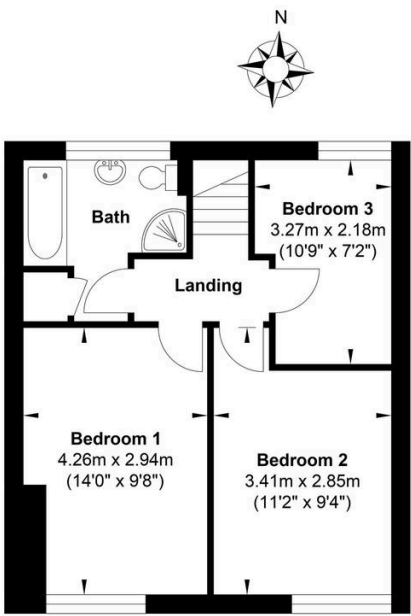
Bedroom Three

10' 9" x 7' 2" (3.27m x 2.18m)

Bathroom



Ground Floor



First Floor

Gross Internal Floor Area : 88 m2 ... 941 ft2

Whilst every attempt has been made to ensure the accuracy of the floor plan contained here, measurements of doors, windows, rooms and any other items are approximate and no responsibility is taken for any error, omission, or mis-statement. This plan is for illustrative purposes only and should be used as such by any prospective purchaser. The services, systems and appliances shown have not been tested and no guarantee as to their operability or efficiency can be given.