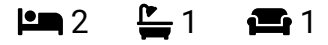


Warwick Road, Solihull, B92 7GA

Offers In Region Of £140,000

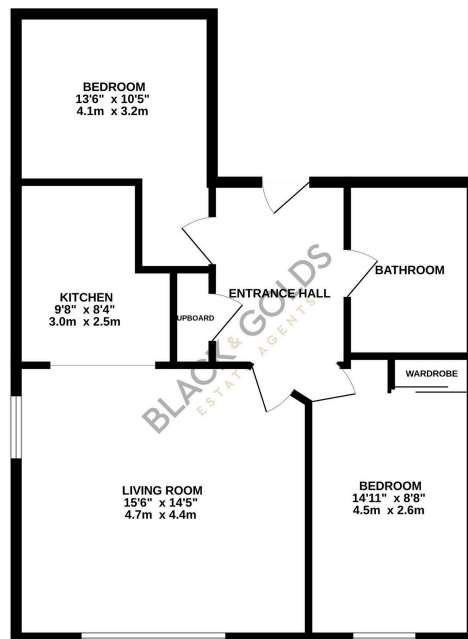


A Second Floor Two Bedroom Apartment situated in this gated development of Rocksborough House, B92. Ideal purchase for first time buyers or investment and offered for sale with NO UPWARD CHAIN.

Key Features

- Ideal for First-Time Buyers or Investors
- Close to Touchwood Shopping Centre
- Modern Open-Plan Living
- Two Double Bedrooms
- Secure Intercom Access
- Allocated Parking Spaces
- Nearby Local Amenities
- No Upward Chain

SECOND FLOOR



While every attempt has been made to ensure the accuracy of the floorplan contained here, measurements of doors, windows, rooms and any other items are approximate and no responsibility is taken for any error, omission or mis-statement. This plan is for illustrative purposes only and should be used as such by any prospective purchaser. The services, systems and appliances shown have not been tested and no guarantee as to their operability or efficiency can be given.
Made with Metropix iCAD25