



WHITEHORSES

Buy. Sell. Let. Relax!

0114 268 8533
info@whitehorses.com
www.whitehorses.com

82 Aisthorpe Road, Woodseats

Sheffield

Offers in Region of **£155,000**

82 Aisthorpe Road

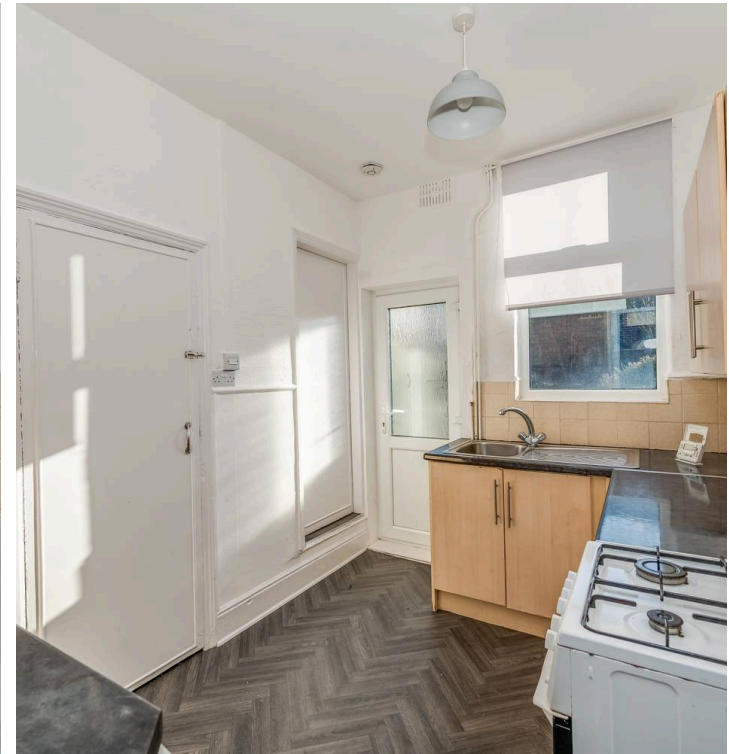
Woodseats, Sheffield

Perfect for first time buyers and buy to let investors alike is this one bedroomed mid-terraced property. Available for sale with no onward chain and being in an excellent location to take full advantage of all of Woodseats many local amenities. This property has a versatile range of accommodation arranged over two levels that would suit any buyer and briefly consists of large front facing lounge, well appointed kitchen/dining room, double bedroom, office/occasional room and family bathroom. Outside is a private garden and ample on street parking.

Council Tax band: A

Tenure: Leasehold

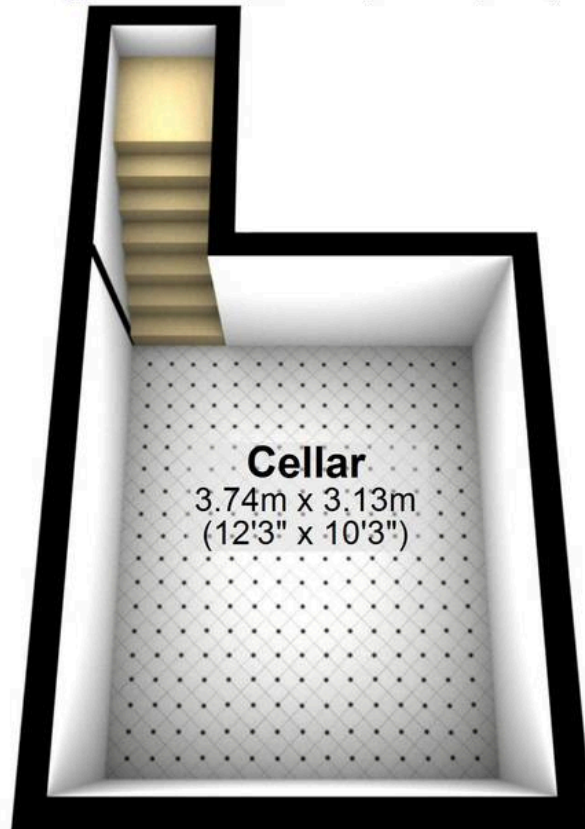
- ONE BEDROOMED MID-TERRACED PROPERTY
- AVAILABLE WITH NO ONWARD CHAIN
- PERFECT FOR FIRST TIME BUYERS
- FANTASTIC LOCATION CLOSE TO MANY LOCAL SHOPS, PUBS AND CAFES
- AMPLE FREE ON STREET PARKING
- EVER POPULAR GRAVES PARK WITHIN EASY WALKING DISTANCE
- IN NEED OF SOME MODERNISATION
- PRIVATE REAR GARDENS
- GREAT PUBLIC TRANSPORT LINKS
- COUNCIL TAX BAND A





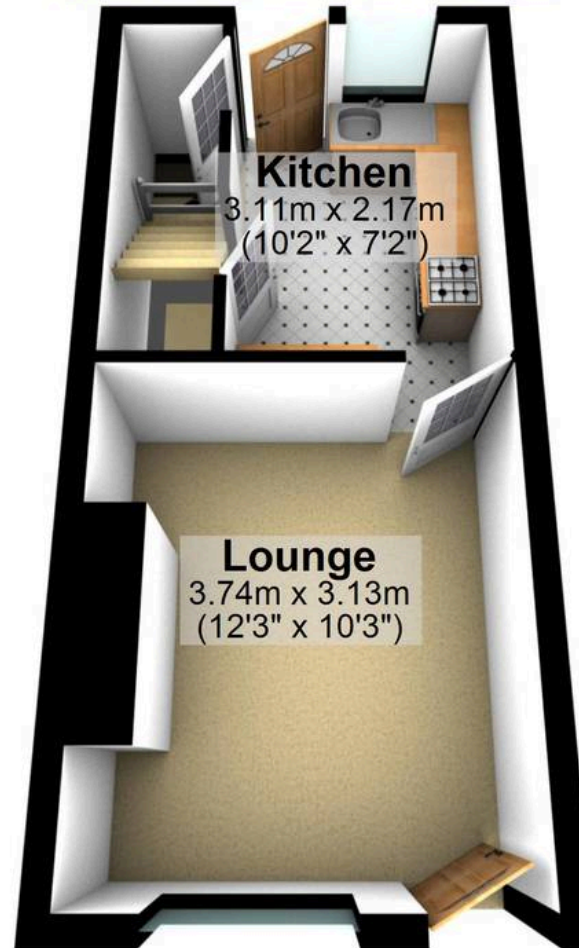
Cellar

Approx. 13.6 sq. metres (146.0 sq. feet)



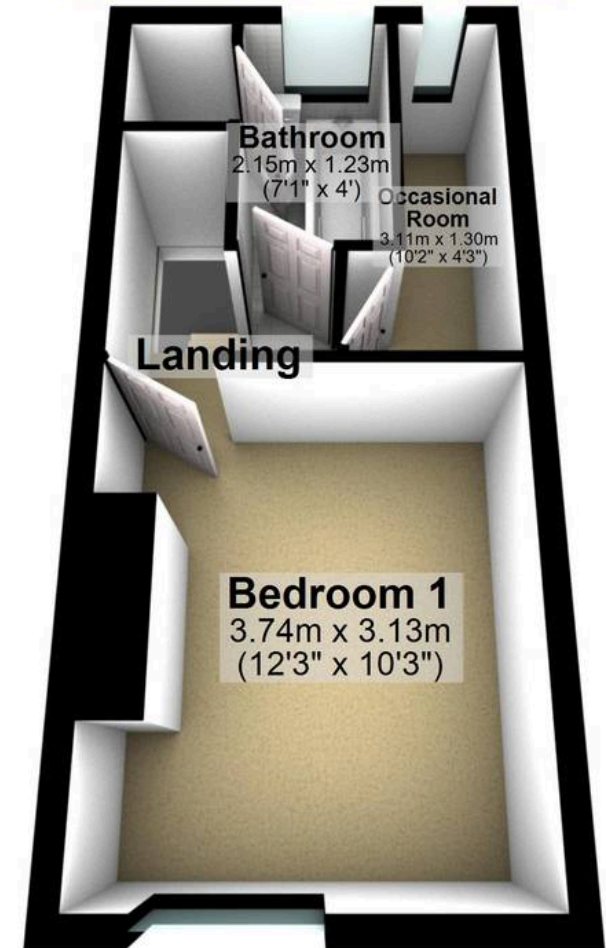
Ground Floor

Approx. 21.8 sq. metres (234.5 sq. feet)



First Floor

Approx. 21.8 sq. metres (234.5 sq. feet)



Total area: approx. 57.1 sq. metres (615.1 sq. feet)

All measurements are approximate
Plan produced using PlanUp.

82 AISTHORPE ROAD