



17 Daffern Avenue, Gun Hill

Coventry

£162,500



17 Daffern Avenue

Gun Hill, Coventry

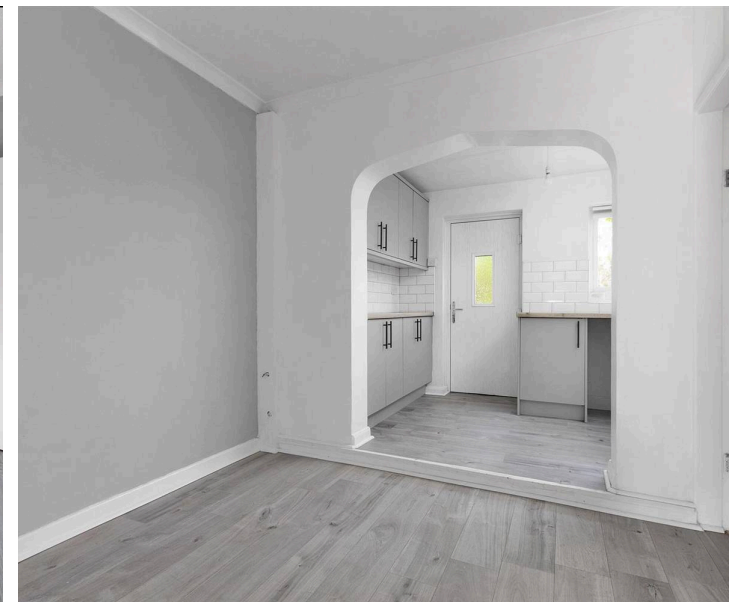
Traditional style mid terraced| Semi rural New Arley location| Cul de sac position| Improved and well presented| Excellent purchase for first time or investors| Lounge, diner & extended kitchen| Three bedrooms & parking to rear| Modern bathroom suite| EPC RATING D
Council Tax band: A

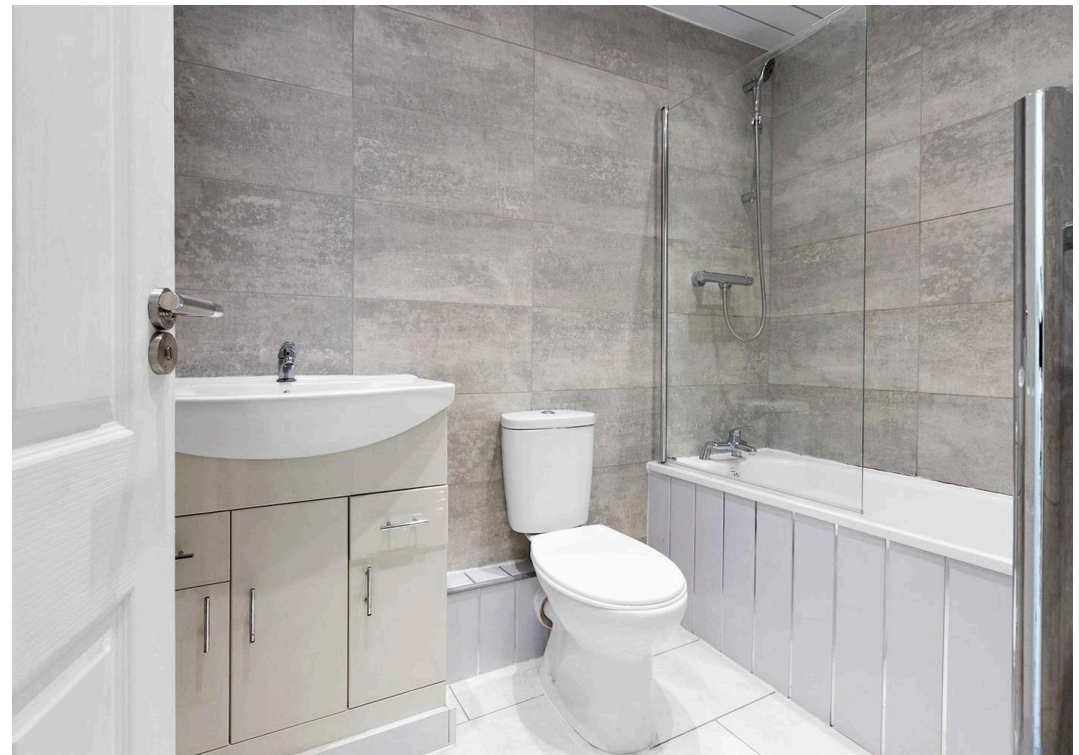
Tenure: Freehold

EPC Energy Efficiency Rating: D

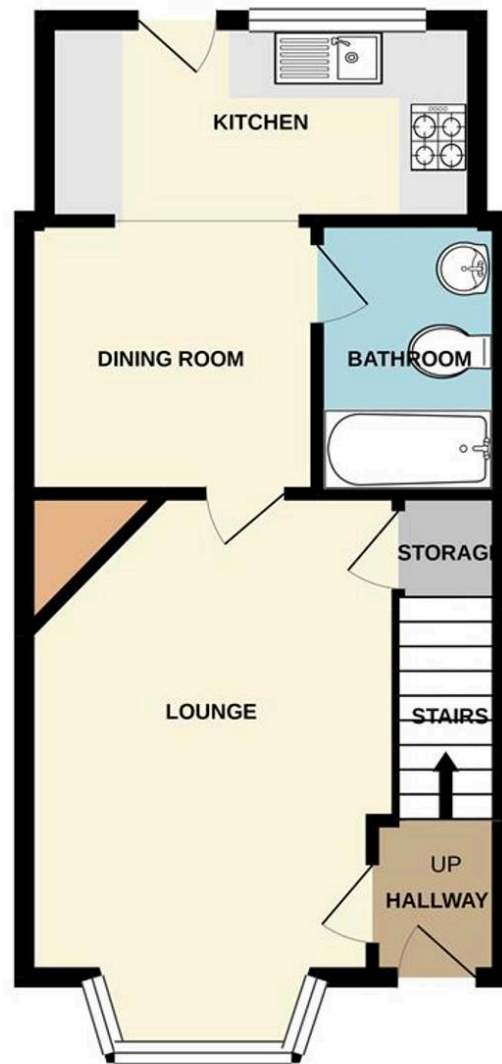
EPC Environmental Impact Rating: D

- Traditional style mid terraced
- Semi rural New Arley location
- Cul de sac position
- Improved and well presented
- Excellent purchase for first time or investors
- Lounge, diner & extended kitchen
- Three bedrooms & parking to rear
- Modern bathroom suite
- EPC RATING D

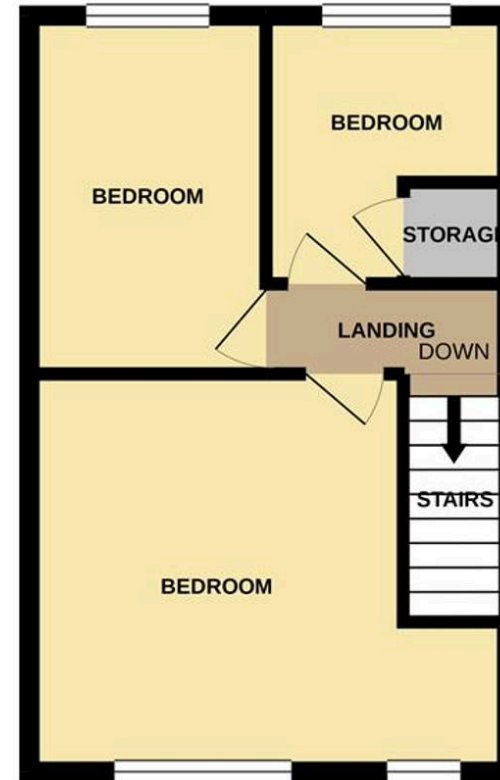




GROUND FLOOR
36.5 sq.m. (393 sq.ft.) approx.



1ST FLOOR
28.5 sq.m. (306 sq.ft.) approx.



TOTAL FLOOR AREA : 64.9 sq.m. (699 sq.ft.) approx.

Whilst every attempt has been made to ensure the accuracy of the floorplan contained here, measurements of doors, windows, rooms and any other items are approximate and no responsibility is taken for any error, omission or mis-statement. This plan is for illustrative purposes only and should be used as such by any prospective purchaser. The services, systems and appliances shown have not been tested and no guarantee as to their operability or efficiency can be given.
Made with Metropix ©2020



Sheldon Bosley Knight Nuneaton

39 Newdegate Street - CV11 4ER

02476374949 • nuneaton@sheldonbosleyknight.co.uk • www.sheldonbosleyknight.co.uk/