



9 Furzedale Park, Hythe, SO45 3HQ
£335,000



ANTHONY JAMES
PROPERTIES



9 Furzedale Park

Hythe, Southampton

The property comprises of two generously sized bedrooms, each enhanced by large window. The spacious living room features a gas fire set within a classic surround. The kitchen, boasting sleek modern units, integrated appliances (including oven and hob), stylish wooden countertops, and a dedicated breakfast area. The kitchen has direct access to the garden. A luxurious bathroom featuring a modern walk-in shower with a glass enclosure, and a compact vanity unit for practical storage.

The property is set within beautifully maintained gardens to both the front and rear. A spacious patio area, while a comfortable outdoor seating bench enhances the space. The bungalow also benefits from a private driveway leading to a detached garage, providing ample off-road parking and secure storage solutions.

Council Tax band: C

Tenure: Freehold



1 Southward House
Dibden Purlieu SO45 4PT

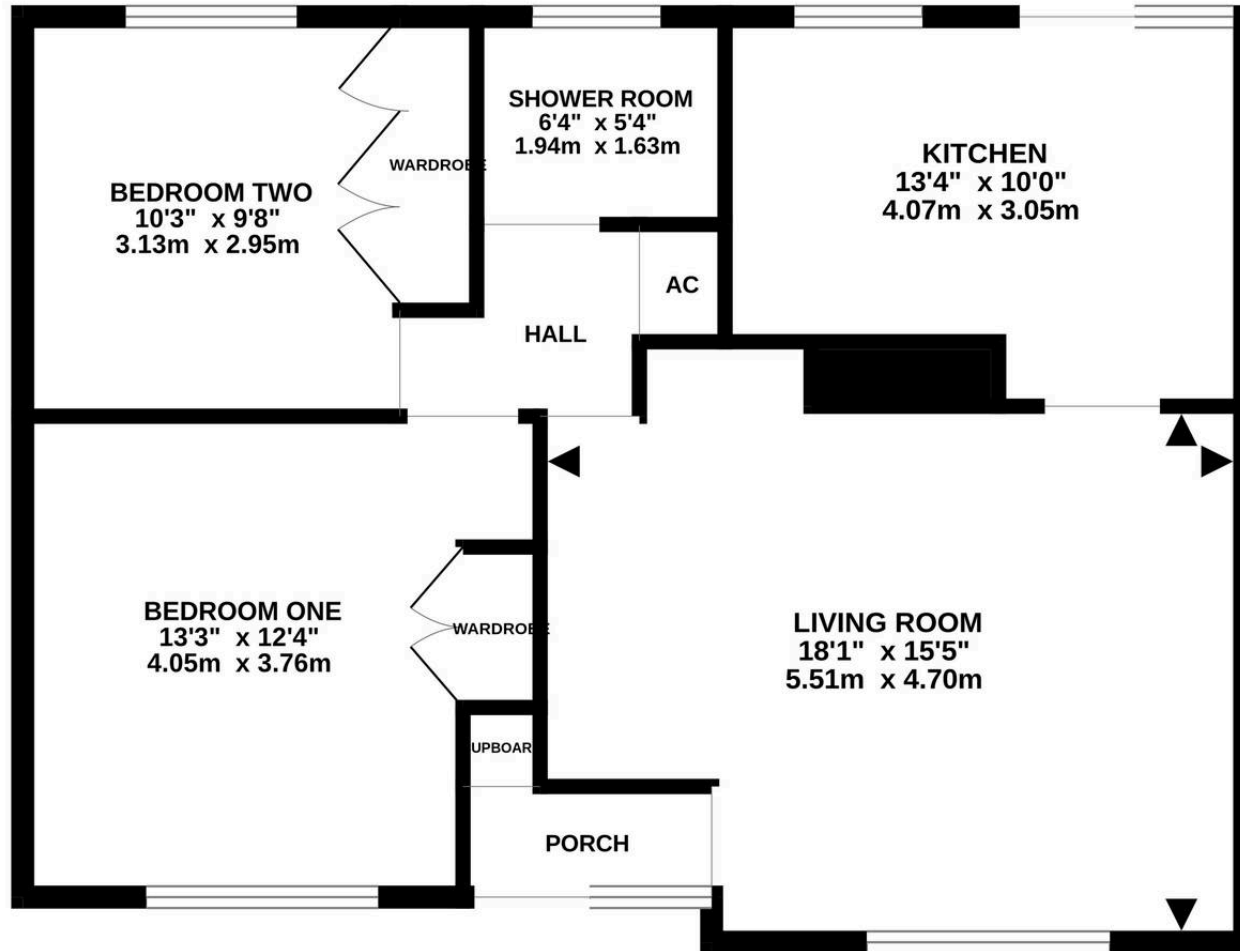


T: 02380 844405

info@anthonyjamesproperties.co.uk



GROUND FLOOR
718 sq.ft. (66.7 sq.m.) approx.



TOTAL FLOOR AREA : 718 sq.ft. (66.7 sq.m.) approx.

Whilst every attempt has been made to ensure the accuracy of the floorplan contained here, measurements of doors, windows, rooms and any other items are approximate and no responsibility is taken for any error, omission or mis-statement. This plan is for illustrative purposes only and should be used as such by any prospective purchaser. The services, systems and appliances shown have not been tested and no guarantee as to their operability or efficiency can be given.

Made with Metropix ©2026