

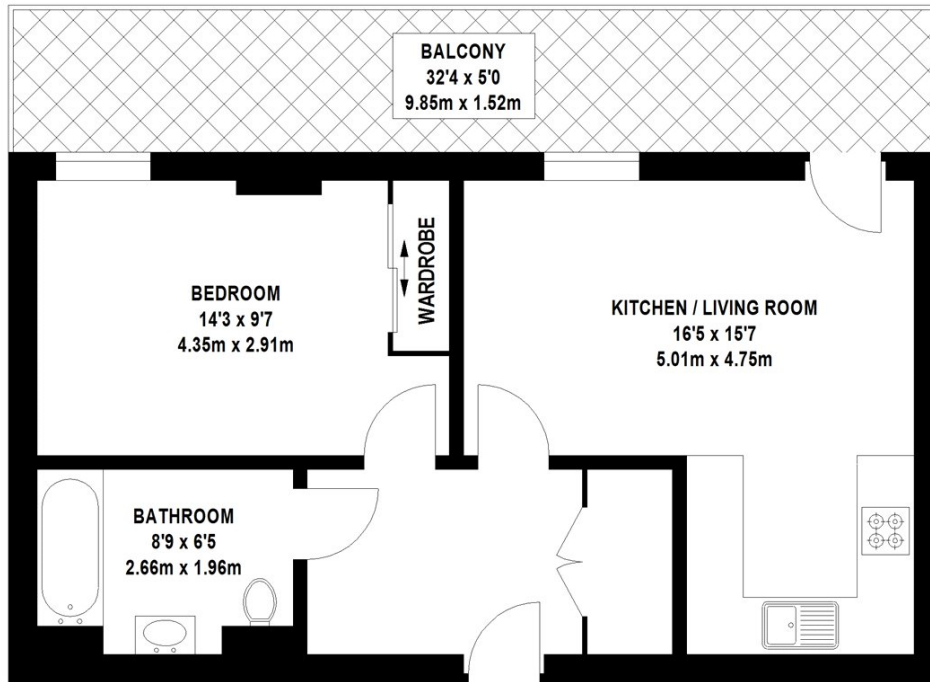


SIRIUS HOUSE, SE16

£400,000

The property comprises a spacious open plan lounge with fully fitted kitchen boasting integrated appliances. The lounge provides access to the private balcony overlooking landscaped communal gardens with a stunning view of canary wharf. A carpeted double bedroom with fitted wardrobe and modern bathroom suite.

- 24hr Concierge
- Residents gym
- Service Charge: £2672
- Ground Rent: £531



TOTAL APPROX. FLOOR AREA 502 SQ.FT. (46.6 SQ.M)

Whilst every attempt has been made to ensure the accuracy of the floor plan contained here, measurements of door, windows, rooms and any other items are approximate and no responsibility is taken for any error, omission, or mis-statement. This plan is for illustrative purposes only and should be used as such by any prospective purchaser. The services, systems and appliances shown have not been tested and no guarantee as to their operability or efficiency can be given © 2022 (ID900704)

LiFE RESIDENTIAL

6 Victoria Parade, London,
SE10 9FR
Sales: 020 8446 2521
Lettings: 020 8418 3609

Energy Rating: B. We aim to make our particulars both accurate and reliable. However they are not guaranteed; nor do they form part of an offer or contract. If you require clarification on any points then please contact us, especially if you're traveling some distance to view. Please note that appliances and heating systems have not been tested and therefore no warranties can be given as to their good working order.