



**Connells**

Heather Close  
Cophorne

# Heather Close Cophorne RH10 3PZ

for sale guide price  
**£400,000-£425,000**



## Property Description

Situated in the heart of Cophorne village, this well-presented three-bedroom mid terrace house offers spacious accommodation ideal for families and first-time buyers alike.

The property features a bright and airy dual-aspect living/dining room, providing an excellent space for relaxing. A stylish gallery-style kitchen offers a practical layout and ample storage.

Upstairs, there are three well-proportioned bedrooms complemented by a modern family bathroom.

Externally, the property benefits from an attractive east-facing rear garden, perfect for dining and enjoying the sunshine.

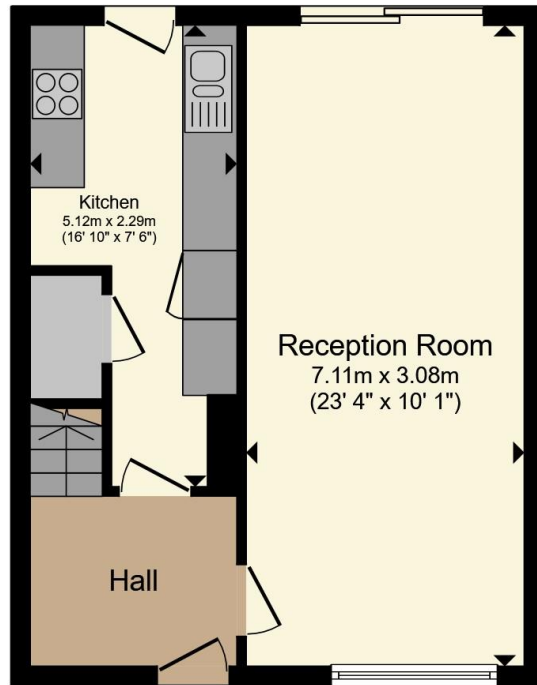
This property is ideally located within easy reach of highly regarded local schools, village amenities, and transport links, making it a convenient and desirable place to live.



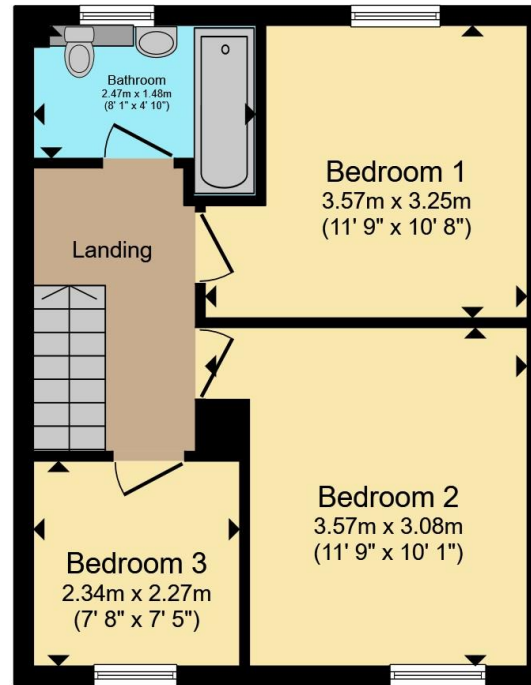








**Ground Floor**



**First Floor**

Total floor area 77.8 m<sup>2</sup> (837 sq.ft.) approx

This floor plan is for illustrative purposes only. It is not drawn to scale. Any measurements, floor areas (including any total floor area), openings and orientation are approximate. No details are guaranteed, they cannot be relied upon for any purpose and they do not form part of any agreement. No liability is taken for any error, omission or misstatement. A party must rely upon its own inspection(s). Powered by [www.propertybox.io](http://www.propertybox.io)



To view this property please contact Connells on

**T 01342 717 727**

**E [copthorne@connells.co.uk](mailto:copthorne@connells.co.uk)**

4 Copthorne Bank  
COPTHORNE RH10 3QX

EPC Rating: C Council Tax  
Band: D

Tenure: Freehold

**view this property online [connells.co.uk/Property/COP403604](http://connells.co.uk/Property/COP403604)**



1. MONEY LAUNDERING REGULATIONS Intending purchasers will be asked to produce identification documentation at a later stage and we would ask for your co-operation in order that there will be no delay in agreeing the sale. 2. These particulars do not constitute part or all of an offer or contract. 3. The measurements indicated are supplied for guidance only and as such must be considered incorrect. Potential buyers are advised to recheck measurements before committing to any expense. 4. We have not tested any apparatus, equipment, fixtures, fittings or services and it is in the buyers interest to check the working condition of any appliances.

Connells Residential is registered in England and Wales under company number 1489613, Registered Office is Cumbria House, 16-20 Hockliffe Street, Leighton Buzzard, Bedfordshire, LU7 1GN. VAT Registration Number is 500 2481 05.

**See all our properties at [www.connells.co.uk](http://www.connells.co.uk) | [www.rightmove.co.uk](http://www.rightmove.co.uk) | [www.zoopla.co.uk](http://www.zoopla.co.uk)**

Property Ref: COP403604 - 0003