



Graham Road, E8

£2,200 Per calendar month

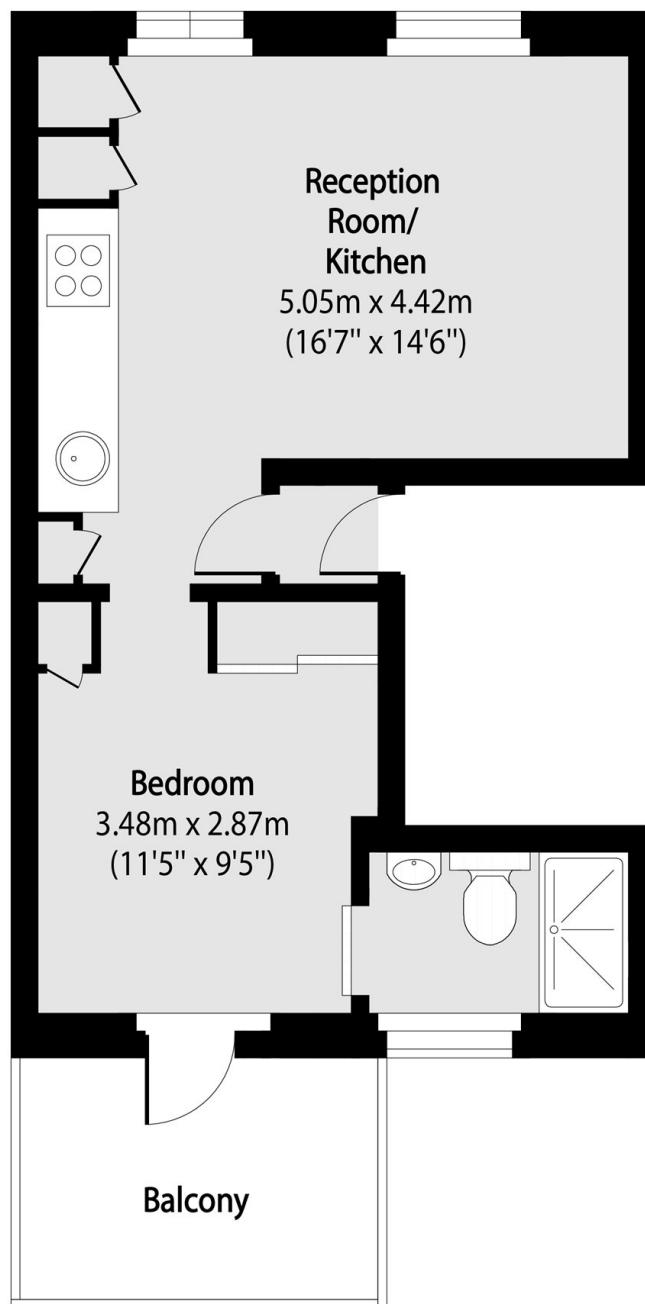
A bright first floor one double bedroom apartment on Graham road, this period conversion property features high ceilings, sash windows, open plan reception and wooden flooring throughout with underfloor heating.

Graham Road runs directly between Dalston, Hackney Central and London Fields. The park, lido and London Fields overground station are within walking distance as well as popular Broadway Market.

Features

- One Double Bedroom
- Period Conversion
- First Floor
- Wooden Flooring
- High Ceilings
- Sash Windows

Graham Road, London, E8



Total area (approx): 34.00 sq m (366 sq. ft)

Balcony total area (approx): 6.22 sq m (67 sq. ft)