



Mansion Gardens

Guide Price £425,000 to £435,000

- Located within historic Penllergaer Woods
- Modern kitchen with integrated appliances
- Bright and airy sunroom overlooking the garden
- Master bedroom with en-suite
- Additional shower room serving the top-floor bedrooms



 4  3  2

Pinkmove

01633 746088
team@pinkmove.co.uk



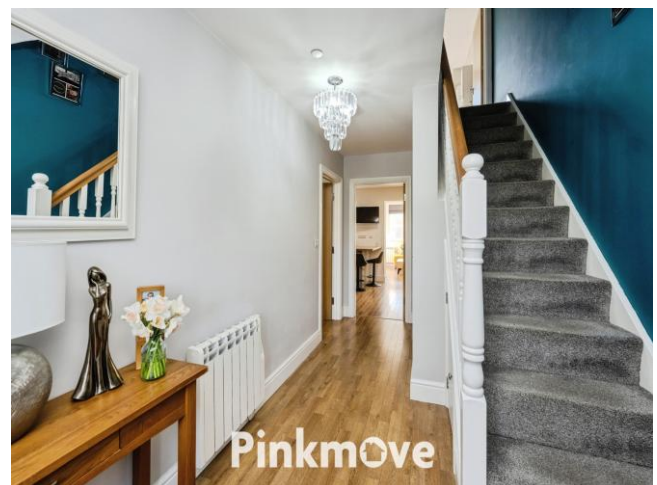
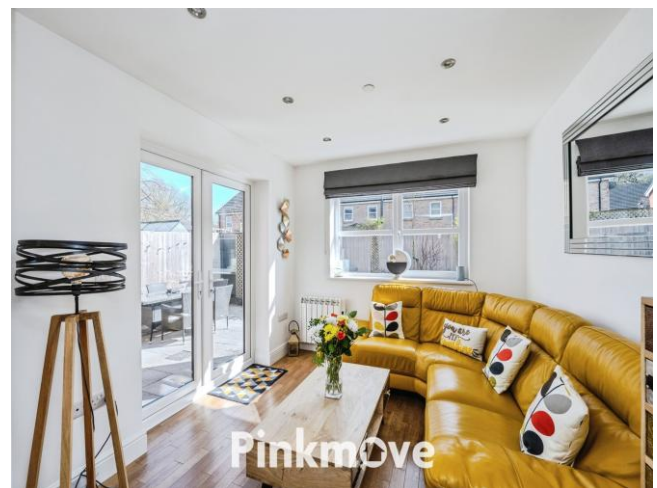
About the property

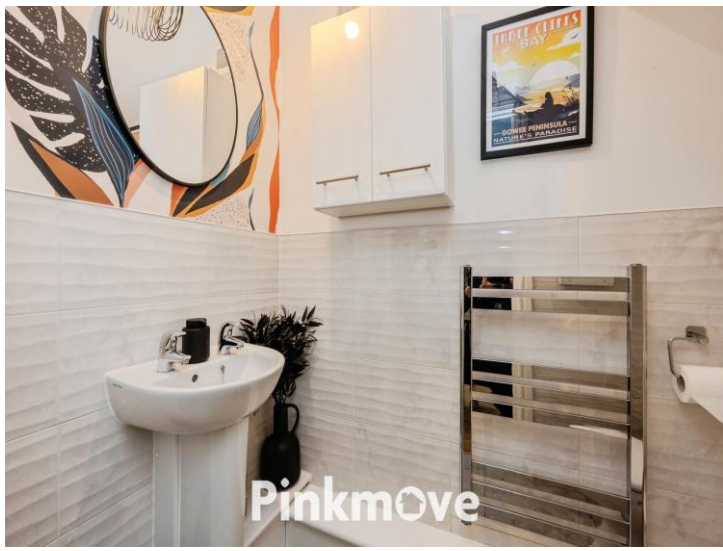
Presenting this immaculate four-bedroom home, beautifully positioned within the historic and picturesque Penllergaer Woods. Offering a peaceful woodland setting while remaining just minutes from Junction 47 of the M4, the location combines tranquillity with excellent convenience.

Upon entering, a spacious hallway leads to the inviting living room and a modern kitchen fitted with stylish cabinetry and integrated appliances. The kitchen flows seamlessly into a bright and airy sunroom overlooking the rear garden—an ideal space for relaxing or entertaining.

The first floor comprises the master bedroom with its own en-suite, a second generous double bedroom, and a contemporary family bathroom finished with modern tiling. Stairs then rise to the second floor, where two further bedrooms are served by an additional shower room with WC, offering fantastic versatility for guests, older children, or homeworking.

Externally, the property benefits from ample driveway parking, gated side access, and an enclosed rear garden framed by a peaceful woodland backdrop. Mansion Gardens is a highly sought-after location, providing access to scenic woodland walks, waterfalls, and is within easy reach of Swansea's amenities and beautiful beaches. This is a superb family home in an exceptionally tranquil and desirable setting—early viewing is highly recommended.





Accommodation

Lounge

Kitchen

Conservatory

Bedroom 1

En-Suite

Bedroom 2

Bathroom

Bedroom 3

Bedroom 4

Shower Room

Floorplan



Ground Floor

First Floor

Second Floor

Total floor area 143.3 sq.m. (1,543 sq.ft.) approx

This floor plan is for illustrative purposes only. It is not drawn to scale. Any measurements, floor areas (including any total floor area), openings and orientation are approximate. No details are guaranteed, they cannot be relied upon for any purpose and they do not form part of any agreement. No liability is taken for any error, omission or misstatement. A party must rely upon its own inspection(s). Powered by www.focalagent.com

Pinkmove

Important Information

Note while we endeavour to make our sales details accurate and reliable, if there is any point which is of particular interest to you, please contact the office and we will be pleased to confirm the position for you. We have not personally tested any apparatus, equipment, fixtures, fittings or services and cannot verify they are in working order or fit for their purposes. Nothing in these particulars is intended to indicate that carpets or curtains, furnishings or fittings, electrical goods (whether wired or not). Gas fires or light fittings or any other fixtures not expressly included form part of the property offered for sale. This computer generated Floorplan, if applicable, is intended as a general guide to the layout and design of the property. It is not to scale and should not be relied upon for dimensions. Tenure: We cannot confirm the tenure of the property as we have not had access to the legal documents. The buyer is advised to obtain verification from their solicitor or surveyor.

Peter Alan Limited is registered in England and Wales under company number 2073153. Registered Office is Cumbria House, 16-20 Hockliffe Street, Leighton Buzzard, Bedfordshire, LU7 1GN. VAT Registration Number is 500 2481 05. For activities relating to regulated mortgages and non-investment insurance contracts, Peter Alan Limited is an appointed representative of Connells Limited which is authorised and regulated by the Financial Conduct Authority. Connells Limited's Financial Services Register number is 302221. Most buy-to-let

