



Rainham Road, NW10

£625,000

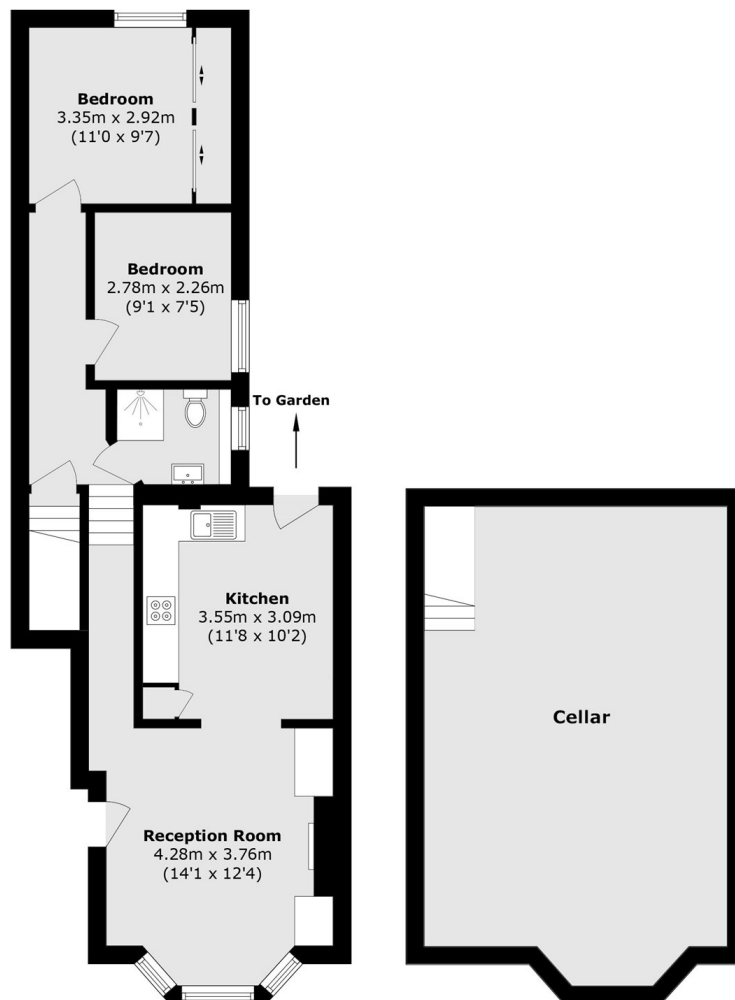
In excellent condition, this two bedroom ground floor flat offers a beautifully presented and spacious reception room and kitchen, leading out to a south-facing private garden. The property further benefits from a cellar, providing excellent additional storage.

Rainham Road is situated in the heart of Kensal Rise, within easy reach of Kensal Green station (Bakerloo Line and Lioness Line), as well as the range of shops, cafés and restaurants along Chamberlayne Road, Salusbury Road in Queen's Park, and Portobello Road.

Features

- Two Bedrooms
- Private Garden
- Period Conversion
- Close to Transport
- Prime Location
- Ample Storage

Rainham Road, London, NW10



Total area (approx.): 58.0 sq. m (624.3 sq. ft)
(Excluding Cellar)