



**Chater Drive, Sutton Coldfield B76 2BJ**

welcome to

**Chater Drive, Sutton Coldfield**

**\*\*LARGER STYLE MODERN HOUSE\*\*\*\*SOUGHT AFTER CUL DE SAC LOCATION\*\*LOUNGE DINER\*\*RECENTLY RE FITTED KITCHEN\*\*THREE BEDROOMS\*\*MASTER WITH EN SUITE\*\*FAMILY BATHROOM\*\*INTEGRATED GARAGE AND DRIVEWAY\*\*WRAP AROUND REAR GARDEN\*\***



### Entrance Hall

Radiator, ceiling light point, parquet flooring.

### Lounge

Double-glazed window to the front, double-glazed bow window to rear, two radiators, two ceiling light points, wood panelling, door to understairs cupboard and laminate flooring.

### Kitchen

Double-glazed window and door to garden, radiator, ceiling light point, loft access, cupboards, drawers, and base units, worksurfaces, sink with mixer tap, hob, cooker hood, oven, dishwasher, concealed boiler and laminate flooring.

### Landing

Loft access, ceiling light point and door to airing cupboard.

### Bedroom One

Double-glazed window to front, radiator, ceiling light point, panelled wall, arch to dressing area with fitted wardrobes and ensuite.

### Ensuite

Double-glazed window to front, radiator, spotlights, loft access, vanity sink, low level w.c., and tiled walls.

### Bedroom Two

Double-glazed window to rear, radiator and ceiling light point.

### Bedroom Three

Double-glazed window to rear, radiator and ceiling light point and built in wardrobe.

### Bathroom

Double-glazed window to rear, ceiling light point, heated towel rail, panelled bath with shower, low level w.c., vanity sink and part tiled walls.

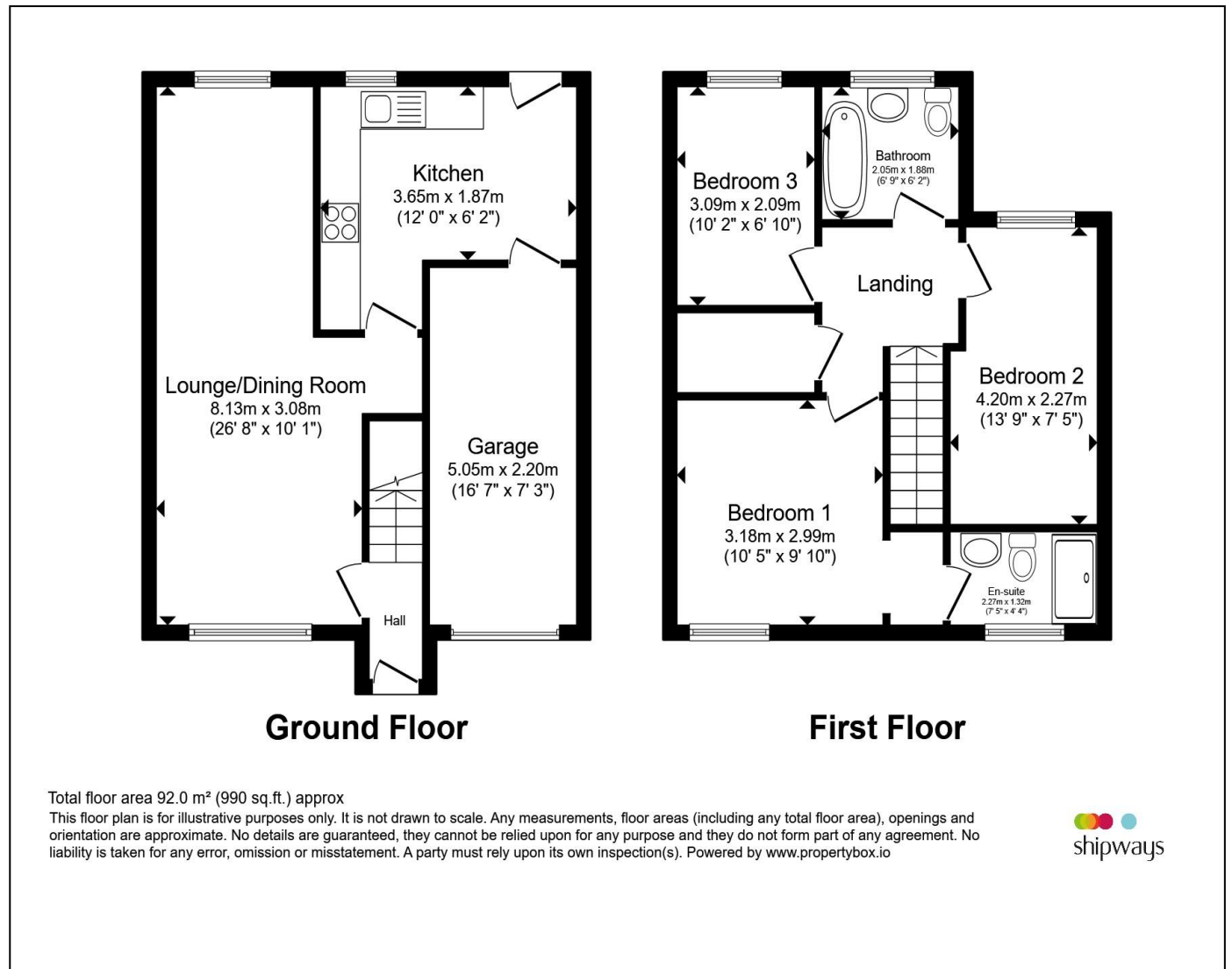
### Garden

Paved area with decked patio area, mainly lawned, shrub borders, paved side area enclosed by wall and

shed with a side gate for access.

### Garage

Metal up and over door, light and power.



**view this property online** [shipways.co.uk/Property/CAB112245](http://shipways.co.uk/Property/CAB112245)



welcome to

## Chater Drive, Sutton Coldfield

- SOUGHT AFTER LOCATION
- LARGER MODERN HOUSE
- THREE BEDROOMS
- MASTER WITH EN SUITE
- RE FITTED KITCHEN

Tenure: Freehold EPC Rating: Awaited  
Council Tax Band: D

offers over

**£375,000**



Please note the marker reflects the  
postcode not the actual property

view this property online [shipways.co.uk/Property/CAB112245](https://shipways.co.uk/Property/CAB112245)



Property Ref:  
CAB112245 - 0002

1. MONEY LAUNDERING REGULATIONS Intending purchasers will be asked to produce identification documentation at a later stage and we would ask for your co-operation in order that there is no delay in agreeing the sale. 2. These particulars do not constitute part or all of an offer or contract. 3. The measurements indicated are supplied for guidance only and as such must be considered incorrect. Potential buyers are advised to recheck measurements before committing to any expense. 4. We have not tested any apparatus, equipment, fixtures or services and it is in the buyers interest to check the working condition of any appliances. 5. Where an EPC, or a Home Report (Scotland only) is held for this property, it is available for inspection at the branch by appointment. If you require a printed version of a Home Report, you will need to pay a reasonable production charge reflecting printing and other costs. 6. We are not able to offer an opinion either written or verbal on the content of these reports and this must be obtained from your legal representative. 7. Whilst we take care in preparing these reports, a buyer should ensure that his/her legal representative confirms as soon as possible all matters relating to title including the extent and boundaries of the property and other important matters before exchange of contracts.

Shipways is a trading name of Sequence (UK) Limited which is registered in England and Wales under company number 4268443, Registered Office is Cumbria House, 16-20 Hockliffe Street, Leighton Buzzard, Bedfordshire, LU7 1GN. VAT Registration Number is 500 2481 05.

  
shipways



**0121 747 4722**



[castlebromwich@shipways.co.uk](mailto:castlebromwich@shipways.co.uk)



258 Chester Road, Castle Bromwich,  
BIRMINGHAM, West Midlands, B36 0JE



[shipways.co.uk](https://shipways.co.uk)