

VISIOLI

REAL ESTATE

**3, Turner House 7, Patricia Close,
Aldershot, Hampshire, GU11 4GG**



2 Bedrooms



2 Bathrooms



823 sq ft

3, Turner House 7, Patricia Close, Aldershot, Hampshire, GU11 4GG

£325,000

Description

Visioli Real Estate presents Turner House, a stylish and low maintenance home ideal for first time buyers, downsizers or investors. Peacefully positioned yet well connected, this modern property offers privacy, comfort and direct access to green communal grounds. Entering through your own private front door, the bright hallway creates an immediate sense of independence and security, giving the feel of a house with the ease of apartment living. To the rear, the contemporary open plan living space is bright and welcoming, with room for both relaxing and dining. Doors open directly onto the communal gardens, creating a seamless connection between indoors and outdoors and adding real lifestyle appeal. The modern kitchen is both stylish and practical, featuring sleek units, integrated appliances and durable quartz worktops, all designed for easy everyday living. The master bedroom is well proportioned and benefits from fitted wardrobes and a smart en suite bathroom. The second bedroom offers flexibility as a guest room, office or hobby space, making the property suitable for a variety of lifestyles. The main bathroom continues the home's modern finish with contemporary fittings and smart features throughout. Located in a secluded part of Gun Hill, the property also benefits from two allocated parking spaces and ample visitor parking, providing excellent convenience for residents and guests alike.

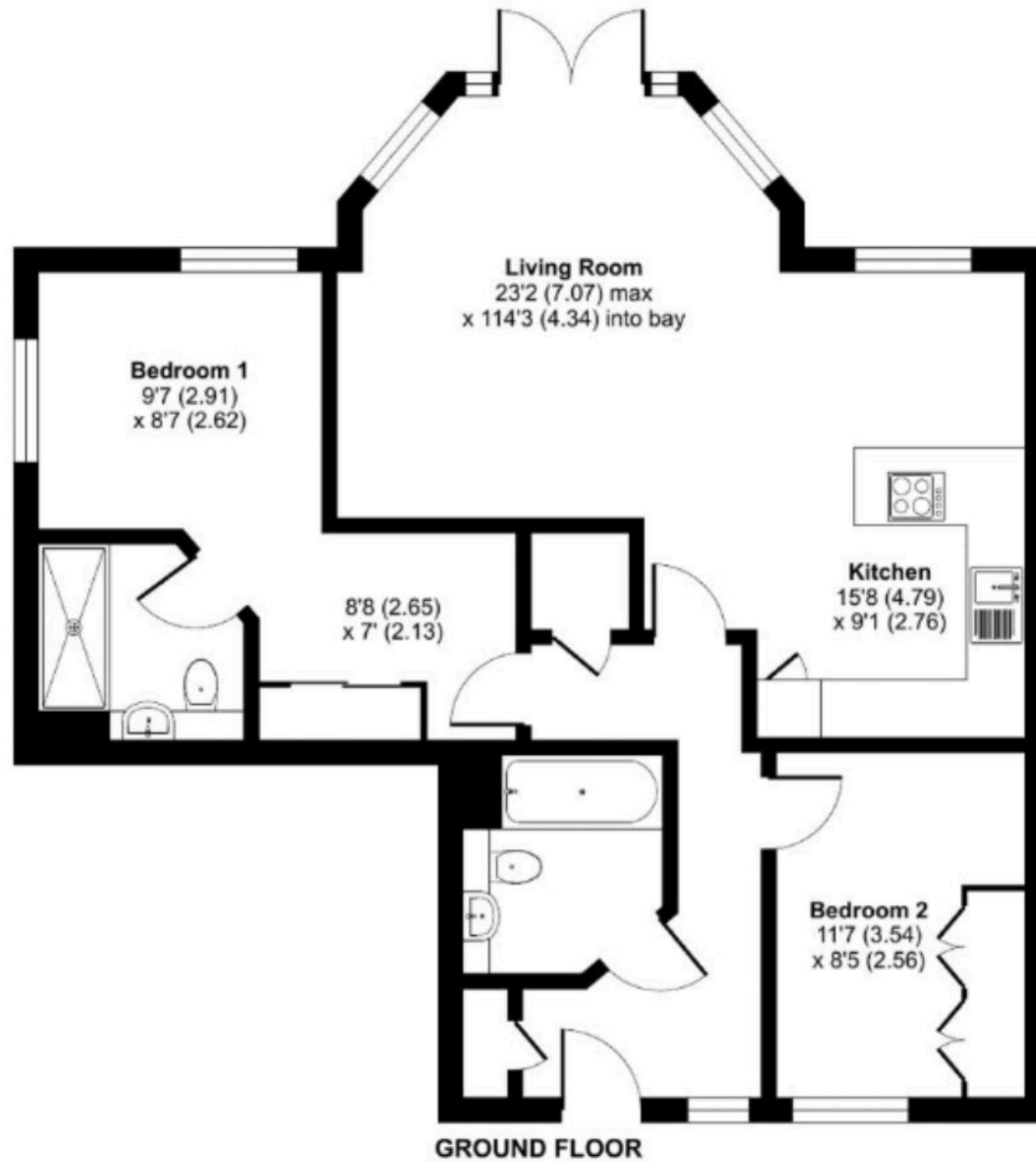






Patricia Close, Wellesley, Aldershot, GU11

Total = 823 sq ft / 76.4 sq m



Turner House,
Aldershot, GU11

Contact Us



01252210145



visiolirealestate.co.uk



sales@visiolirealestate.co.uk