

HJC

HIGHER VALUES



Warwick Gardens

Thames Ditton, KT7 0RB

Guide Price £379,950

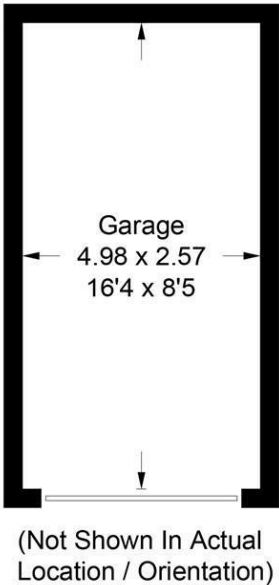
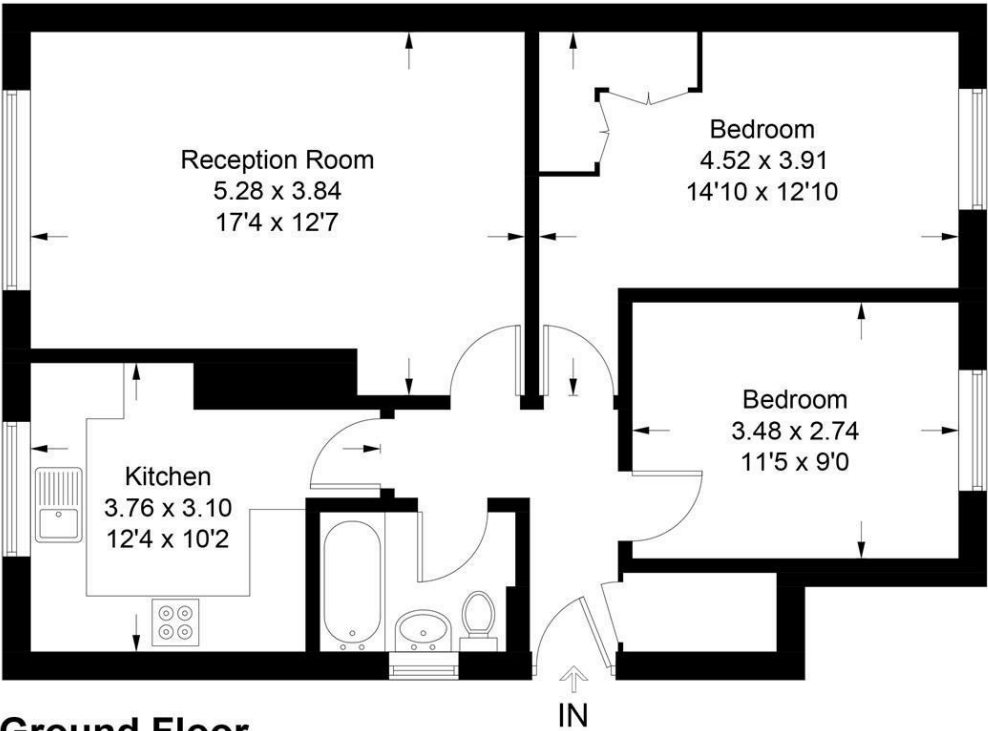
A two double bedroom ground floor maisonette with garage, offering comfort and convenience in the quiet cul de sac location of Warwick Gardens. Featuring a spacious lounge/dining room, modern fitted kitchen and white bathroom. Further benefits are it's own front door and access to well maintained communal gardens. Being sold with a long lease and is share of freehold.

- Ground floor maisonette
- Modern fitted kitchen
- Communal gardens
- Garage
- Share of freehold
- 2 double bedrooms
- Large lounge/dining room
- Quiet cul de sac
- Private storage cupboard
- Long lease

Floor Plan

Warwick Gardens

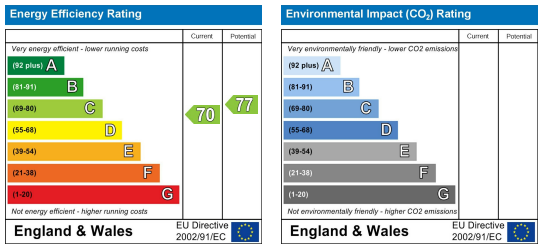
Approximate Gross Internal Area = 64.3 sq m / 692 sq ft
Garage = 12.7 sq m / 137 sq ft
Total = 77.0 sq m / 829 sq ft



Ground Floor

Illustration for identification purposes only, measurements are approximate, not to scale. Fourlabs.co © (ID1226871)

Energy Efficiency Graph



These particulars, whilst believed to be accurate are set out as a general outline only for guidance and do not constitute any part of an offer or contract. Intending purchasers should not rely on them as statements of representation of fact, but must satisfy themselves by inspection or otherwise as to their accuracy. No person in this firms employment has the authority to make or give any representation or warranty in respect of the property.