



AVRIL COTTAGE

Welford-on-Avon, Warwickshire



A BEAUTIFULLY APPOINTED MODERN FOUR BEDROOM HOME

In a quiet position within the popular village of Welford-on-Avon with an elegant finish throughout.



4



4



2

EPC

C

Local Authority: Stratford-on-Avon District Council. Telephone: 01789 267575.

Council Tax Band: G

Services: Mains water and electricity are connected to the property. LPG Gas. 10 year NHBC warranty from 2020.

Tenure: Freehold.

Postcode: CV37 8GD

What3words:///providing.stars.chipper

SITUATION

Welford-on-Avon is a highly desirable village located four miles southwest of Stratford-upon-Avon. The property is in an ideal location, with good access to Stratford-upon-Avon, as well as the nearby market towns of Alcester and Evesham. As its name suggests, Welford-on-Avon is set along the picturesque River Avon and is famous for having the country's second-largest Maypole. The village has a range of local amenities, including a convenience store, a church, a chapel, a village hall, a butcher, a hairdresser, a marina, and a prestigious bowling club. There is also a golf course, cricket and football club, along with three highly regarded gastro pubs and restaurants. For those who enjoy the outdoors, the area offers a variety of beautiful country walks. The village benefits from a strong sense of community and is home to a well-regarded primary school within walking distance of the property.

For families, there is a wide selection of state, private, and grammar schools in the area. Stratford-upon-Avon, known for its rich cultural heritage, is home to world-renowned theatres. The town also offers an abundance of shops, restaurants, and pubs, making it an ideal location for both culture and convenience.

Stratford-upon-Avon 5 miles, Warwick 13 miles, Warwick Parkway Station 14 miles, Honeybourne Station 5.3 miles, Leamington Spa 16 miles, M40 (J15) 11 miles (distances approximate).









THE PROPERTY

This attractive detached property in Welford, built in 2020, offers a contemporary design with elegant finishes throughout. Situated in a peaceful location on a private lane, yet within easy reach of the village's amenities, Avril Cottage provides the perfect balance of tranquility and convenience.

Upon entering through the oak front door, the entrance hallway leads to a staircase rising to the first floor and a guest cloakroom. At the far end of the hallway, there is a spacious utility room. To the left, the large open-plan kitchen, dining, and living area is filled with natural light, featuring windows on two sides and bi-folding doors that open to the garden. The kitchen is finished with quartz marble surfaces and includes integrated appliances, such as a Zanussi fridge/freezer, AEG dishwasher, microwave, gas hob, double oven, and Cookology extractor fan. The generous drawing room is also bathed in natural light, with windows on both sides and French doors leading to the side garden.

A door leads from the drawing room to the ground floor bedroom suite, which includes an en suite shower room, a walk-in cupboard, and its own private access, offering the potential for self-contained living.

Upstairs, the principal bedroom is spacious, with a dual aspect and an en suite shower room. Bedroom two also benefits from an en suite shower room and a rear aspect, while bedroom three is a double room with a front aspect. A family bathroom serves bedroom three.



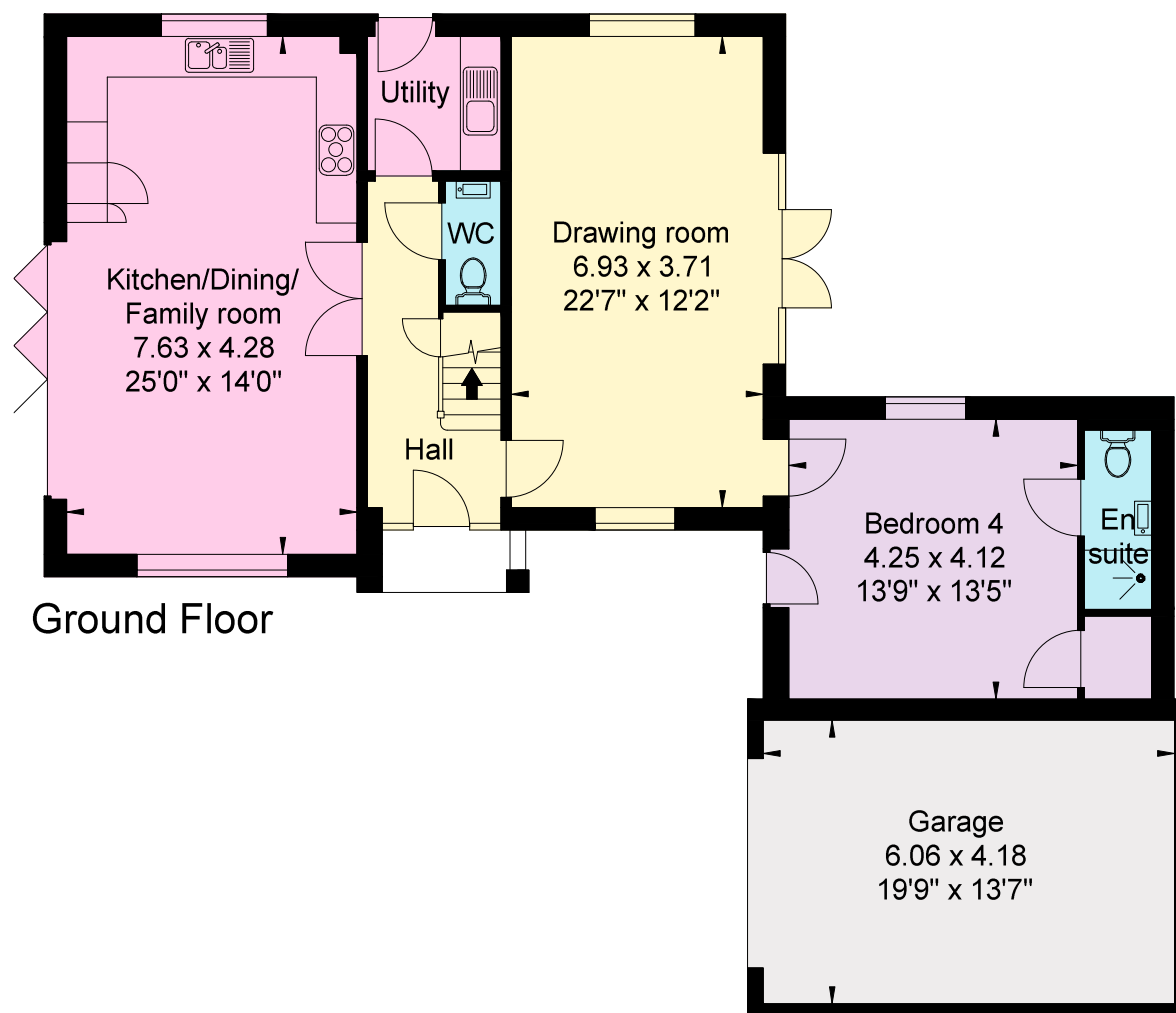
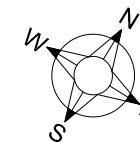




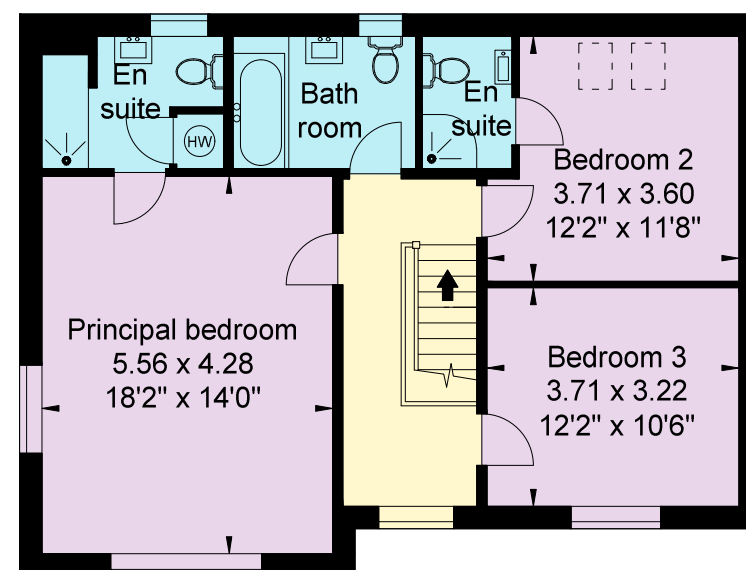
OUTSIDE

Outside, Avril Cottage is complemented by a beautifully landscaped garden that wraps around three sides of the house, with two sections of lawn and a large patio area ideal for outdoor entertaining. To the front, there is off-road parking on the driveway for several cars, along with a single garage with an electric door.





Ground Floor



First Floor

Approximate Gross Internal Area

House: 171 sq m (1,841 sq ft)

Garage: 25 sq m (273 sq ft)

Total: 196 sq m (2,114 sq ft)

This plan is for layout guidance only. Not drawn to scale unless stated. Windows and door openings are approximate. Whilst every care is taken in the preparation of this plan, please check all dimensions, shapes and compass bearings before making any decisions reliant upon them. (ID767266)

We would be delighted
to tell you more.

Samantha Bysouth
01789 206 953
samantha.bysouth@knightfrank.com

Knight Frank Stratford-upon-Avon
Bridgeway House, Bridgeway,
Stratford-upon-Avon, CV37 6YX

knightfrank.co.uk

Your partners in property

1. Particulars: These particulars are not an offer or contract, nor part of one. You should not rely on statements given by Knight Frank in the particulars, by word of mouth or in writing ("information") as being factually accurate about the property, its condition or its value. Neither Knight Frank nor any joint agent has any authority to make any representations about the property, and accordingly any information given is entirely without responsibility on the part of Knight Frank. 2. Material Information: Please note that the material information is provided to Knight Frank by third parties and is provided here as a guide only. While Knight Frank has taken steps to verify this information, we advise you to confirm the details of any such material information prior to any offer being submitted. If we are informed of changes to this information by the seller or another third party, we will use reasonable endeavours to update this as soon as practical. 3. Photos, Videos etc: The photographs, property videos and virtual viewings etc. show only certain parts of the property as they appeared at the time they were taken. Areas, measurements and distances given are approximate only. 4. Regulations etc: Any reference to alterations to, or use of, any part of the property does not mean that any necessary planning, building regulations or other consent has been obtained. A buyer must find out by inspection or in other ways that these matters have been properly dealt with and that all information is correct. 5. Fixtures and fittings: A list of the fitted carpets, curtains, light fittings and other items fixed to the property which are included in the sale (or may be available by separate negotiation) will be provided by the Seller's Solicitors. 6. VAT: The VAT position relating to the property may change without notice. 7. To find out how we process Personal Data, please refer to our Group Privacy Statement and other notices at <https://www.knightfrank.com/legals/privacy-statement>.

Particulars dated March 2025. Photographs and videos dated March 2025. All information is correct at the time of going to print. Knight Frank is the trading name of Knight Frank LLP. Knight Frank LLP is a limited liability partnership registered in England and Wales with registered number OC305934. Our registered office is at 55 Baker Street, London W1U 8AN. We use the term 'partner' to refer to a member of Knight Frank LLP, or an employee or consultant. A list of members names of Knight Frank LLP may be inspected at our registered office. If you do not want us to contact you further about our services then please contact us by either calling 020 3544 0692, email to marketing.help@knightfrank.com or post to our UK Residential Marketing Manager at our registered office (above) providing your name and address.



Date: 17 July 2025
Our reference: STR012420792

Avril Cottage, Two Acre Lane, Welford on Avon, Stratford-upon-Avon, CV37 8GD

We have pleasure in enclosing details of the above property for which we are quoting a guide price of offers in excess of **£699,000**.

Please let us know if you need any further information about the property or surrounding area and we will be delighted to provide it.

Full details of all our properties and a wide range of services can be viewed online at knightfrank.co.uk. You can also receive early information on new properties coming on to the market by signing up to [My Knight Frank](#).

For additional information or to make arrangements to view the property, please get in touch.

We'd love to help you.

Yours faithfully

A stylized, handwritten signature in black ink that reads "Knight Frank".

KNIGHT FRANK LLP

Enc:

Samantha Bysouth
Associate
+44 1789 206 953
samantha.bysouth@knightfrank.com

Knight Frank, Stratford
Bridgeway House, Bridgeway, Stratford upon Avon, CV37 6YX
+44 1789 297 735

knightfrank.co.uk

Knight Frank LLP is a limited liability partnership registered in England and Wales with registered number OC305934. Our registered office is at 55 Baker Street, London W1U 8AN. We use the term 'partner' to refer to a member of Knight Frank LLP, or an employee or consultant. A list of members' names of Knight Frank LLP may be inspected at our registered office.

Regulated by RICS

Your partners in property

V4.3 Sep 24