

Cromwell Road, SW7

£692 Per week

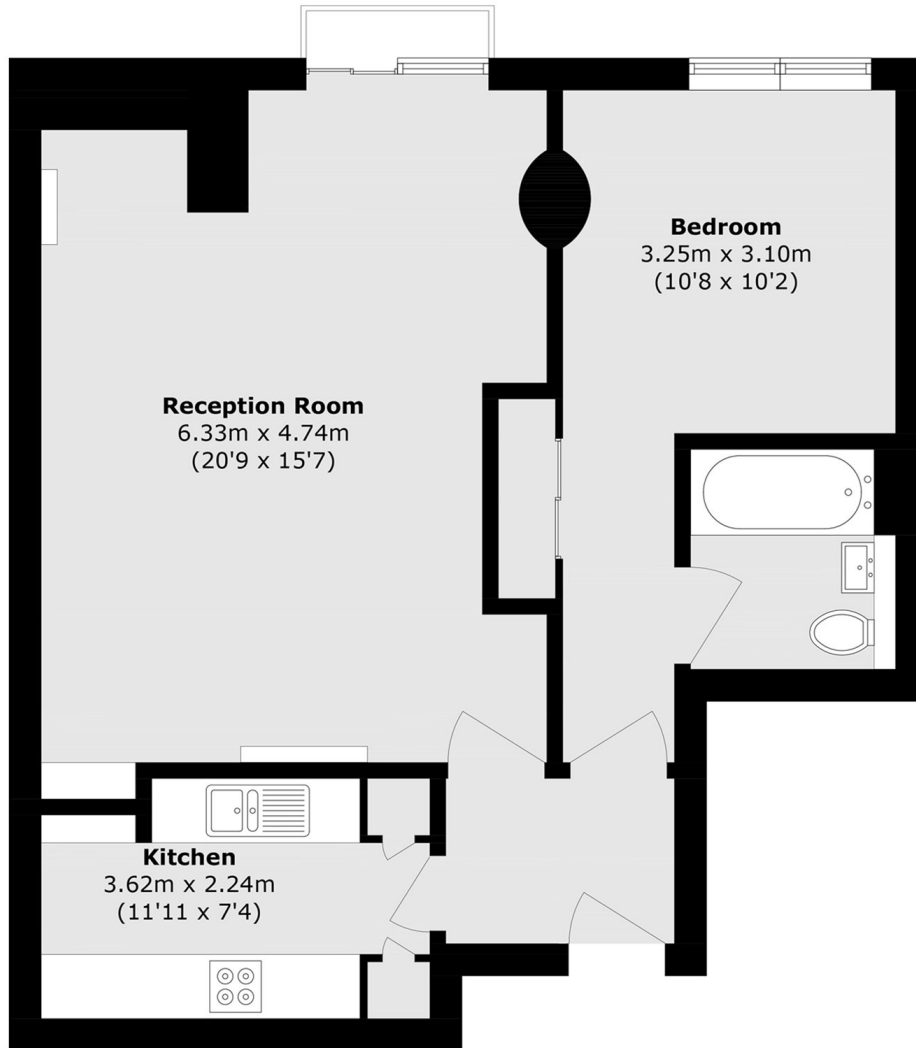
A recently refurbished one bedroom property in a portered block. The property has wood flooring throughout, a separate kitchen and a private balcony.

Further benefits include lift access, the newly opened Harbour Club gym located next door, and a position within a mile of Gloucester Road Underground Station, Hyde Park, and a wide range of shops and amenities.

Features

- One Double Bedroom
- Seventh Floor
- Lift Access
- Wooden Flooring
- 24-hour Portage
- Separate Kitchen

Cromwell Road, London, SW7



Seventh Floor

Total area (approx.): 59.5 sq. m (640.5 sq. ft)