

176 Addycombe
Terrace
Heaton
Newcastle upon Tyne
NE6 5TY

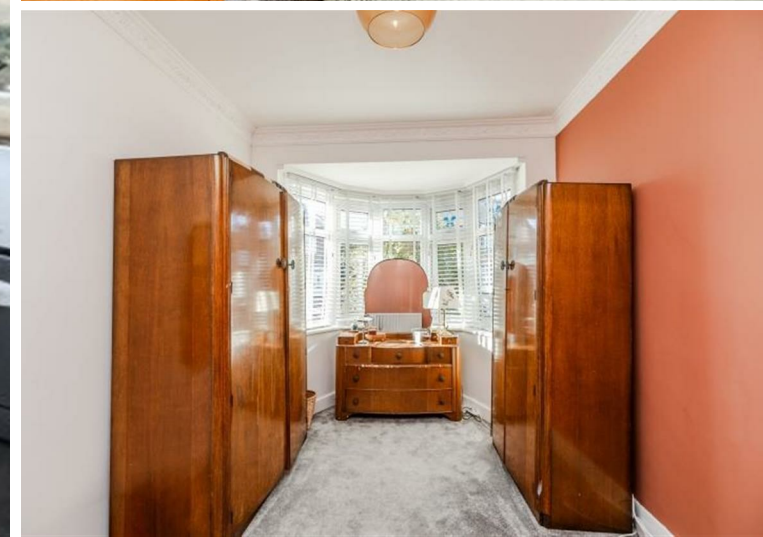
Asking Price
£240,000



176 Addycombe Terrace
Heaton
Newcastle upon Tyne
NE6 5TY

- 2 Bedroom Semi Detached Bungalow
- Lounge and Separate Dining Room
- Modern Kitchen and Bathroom
- Gas Central Heating
- Council Tax Band C
- Both Bedrooms are Doubles
- No Upper Chain Involved
- Driveway and Lovely Enclosed Rear Garden
- Sealed Unit Double Glazed Windows
- EPC rating D





Ground Floor

Approx. 64.2 sq. metres (691.3 sq. feet)



Total area: approx. 64.2 sq. metres (691.3 sq. feet)

Whilst every attempt has been made to ensure the accuracy of the floor plan contained here, measurements of doors, windows, rooms and any other items are approximate and no responsibility is taken for any error, omission, or mis-statement. The Plan is for illustrative purposes only. Version 1

Plan produced using PlanUp.

EPC Rating: D
Council Tax Band: C

Whilst every care has been taken to prepare these particulars, they are for guidance purposes only. All measurements are approximate and whilst every care has been taken to ensure their accuracy, they should not be relied upon and potential buyers/tenants are advised to recheck the measurements. The agent has not tested any equipment, services, fixtures or fittings and makes no representation regarding their condition.

CONTACT

246 Chilingham Road, Heaton,
Newcastle upon Tyne, NE6 5LQ

E: heaton@goodfellowsestateagents.com
T: 0191 2654400

Goodfellows
estate agents.com