

2 Copsham House, 53 Broad Street,
Chesham, Buckinghamshire, HP5 3EA



ROBSONS
RESIDENTIAL SALES

2 Copsham House, 53 Broad Street, Chesham, Buckinghamshire, HP5 3EA

A beautifully presented 2 bedroom & 2 bathroom (one en-suite) town centre ground floor garden flat with the benefit of allocated parking and quality Karndean flooring throughout. Superbly located only a 0.1 mile walk from the High Street, 0.25 mile from Lowndes Park, and 0.3 mile from the train station. The property provides an L-shape hallway, open-plan kitchen/sitting/dining room with double doors onto the private part walled courtyard, two comfortable bedrooms both with fitted wardrobes, and two fully tiled bathrooms for easy maintenance. To the rear of Copsham House is a car park with an allocated space. No onward chain. Leasehold – 125 years from 1st January 2014 Ground rent - £295 pa Service charge - £910.40 (1/1/26 – 30/6/26) EPC rating: E. Council Tax Band: C

Chesham is a popular old market town within the Chilterns and positioned at the end of the Metropolitan Line providing a fast rail service into the West End and City of London (Baker Street approx. 55 minutes). The town provides a busy pedestrianised high street, featuring a twice weekly market selling local produce, specialist individual shops and national retailers including Waitrose, Boots and Sainsburys. In addition, the Elgiva theatre/cinema offers a regular programme whilst Lowndes Park includes a lake, child's playground and immediate access to the surrounding countryside which forms part of the Chilterns Area of Outstanding Natural Beauty. Chesham Station is approximately 0.3 miles from the property and access to the motorway network can be found at nearby Hemel Hempstead (M1), Chorleywood (M25) and Beaconsfield (M40). The area is also recognised for its highly regarded schooling at both primary and senior level including the acclaimed Chesham Grammar School and the renowned Dr Challoner's Grammar Schools The Beacon School (Boys) for Nursery – Year 8, Heatherton (Girls) and Chesham Prep (Boys & Girls) for Nursery – Year 6: whilst senior schooling can be found at Berkhamsted School (Boys and Girls), Royal Masonic (Girls) & Pipers Corner (Girls).



Viewing by appointment only

via

Robsons Estate Agents

1 White Hill Court

Chesham

Buckinghamshire

HP5 3EA

Tel: 01494 724999

email: property@robsonsbucks.com



Directions: From our Chesham office, turn right onto Broad Street and Copsham House is a short distance on the right-hand side.

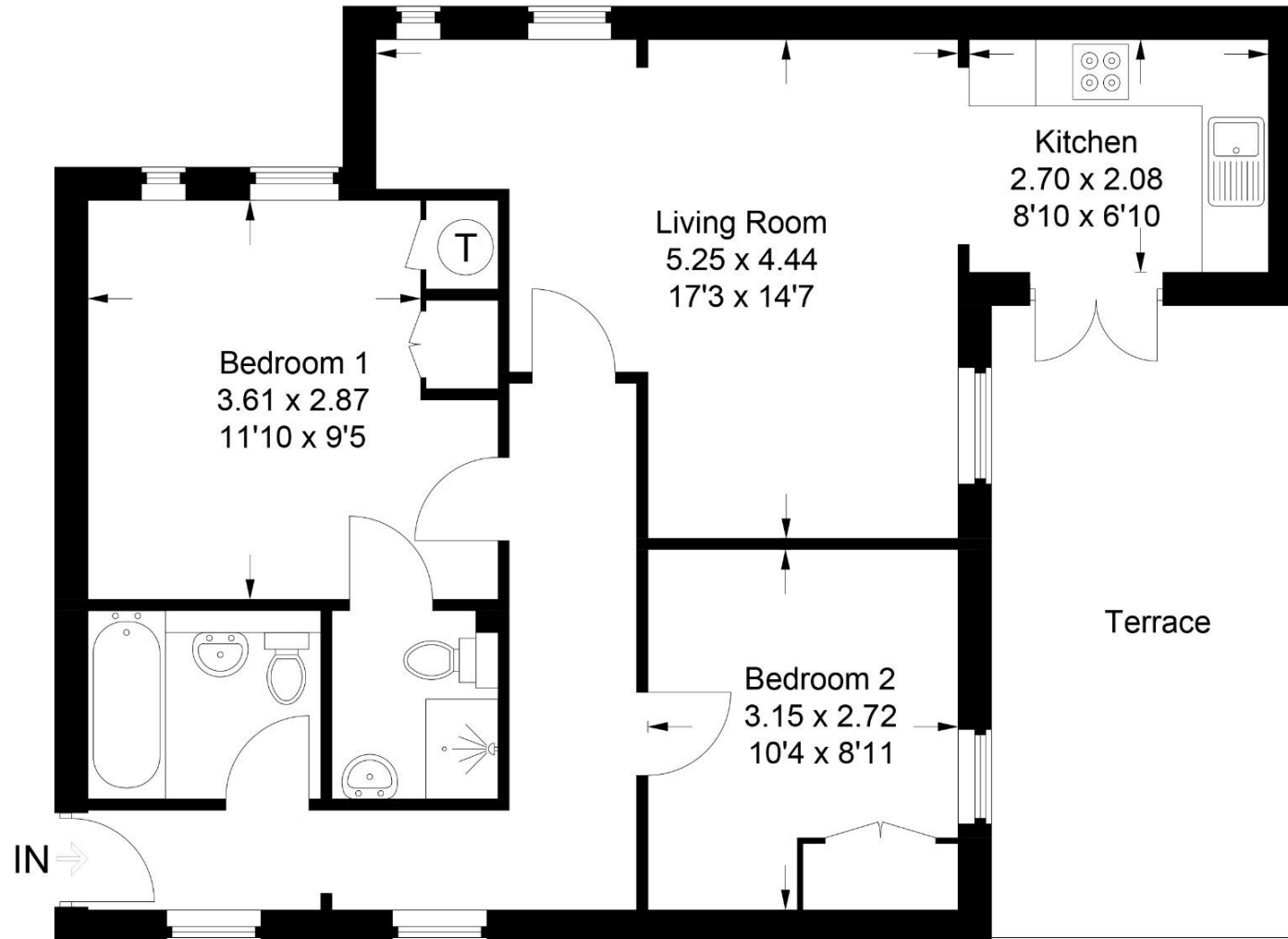
* The particulars of Sale have been prepared as a general guide only. We have not carried out a detailed survey of the structure or tested the services, equipment and appliances and interested parties should commission their own reports. Room sizes are approximate and should not be relied upon when ordering carpets, curtains or other furnishings. Garden and site measurements are approximate and boundaries have been measured as fenced or taken from the Ordinance Survey via Promap or both.

Purchasers should seek confirmation of the legal boundaries from their solicitor prior to proceeding with a purchase.

* Robsons for themselves and for the vendors or lessors of this property give notice that; (i) the particulars are set out as a general outline only for the guidance of intended purchasers or lessees, and do not constitute part of, an offer or contract; (ii) all descriptions, dimensions, references to condition and necessary permissions for use and occupation, and other details are given without responsibility and any intending purchasers or tenants should not rely on them as statements or representations of fact but must satisfy themselves by inspection or otherwise as to the correctness of each of them; (iii) no person in the employment of Robsons has any authority to make or give any representation or warranty whatever in relation to this property

2 Copsham House, 53 Broad Street, Chesham, Buckinghamshire, HP5 3EA

Approximate Gross Internal Area = 64.0 sq m / 689 sq ft



This plan is for layout guidance only. Not drawn to scale unless stated. Windows and door openings are approximate. Whilst every care is taken in the preparation of this plan, please check all dimensions, shapes and compass bearings before making any decisions reliant upon them.

© CJ Property Marketing Ltd Produced for Robsons

