



Zaza Johnson & Bath
Estate Agents

41 St Johns Hill ■ Shrewsbury ■ SY1 1JQ ■ Tel: 01743 248351 ■ Fax: 01743 249217 ■ Web: www.zjandb.com ■ Email: info@zjandb.com



Bordar Croft, Pontesford Hill, Pontesbury, Shrewsbury, Shropshire, SY5 0UH

Offers in the Region Of £450,000

Dating back to the late 16th Century, this beautiful 2 bedroom Grade II listed timber framed cottage has been lovingly restored by the current owners. Standing in grounds approaching an acre beneath Pontesford Hill, the property provides a great lifestyle. Filled with character, accommodation includes: Entrance Hall, Living Room, Kitchen, Dining Area, Pantry, Utility, Attractive Bathroom, 2 Double Bedrooms and office space. Ample Driveway Parking, Viewing Is Absolutely Essential.



Bordar Croft, Pontesford Hill, Pontesbury, Shrewsbury, Shropshire, SY5 0UH

The mention of any appliances and/or services within these sales particulars does not imply that they are in full and efficient working order.

Accommodation comprises

Part glazed stable door.

Entrance Hall

Wood style laminate flooring, decorative glazed doors to

Large Pantry

Walk-in Pantry with shelving, stone flooring and window.

Dining Room 13' 2" x 5' 11" (4.01m x 1.80m)

Under floor heating, wealth of exposed timbers, 3 windows enjoying views over extensive countryside towards the Brieddens. Alcove with brick flooring and staircase leading to First Floor Landing. Opening to

Kitchen 13' 4" x 10' 1" (4.06m x 3.07m)

Extremely well equipped and attractively fitted with good range of base and eye level units and worktops, inset white glazed sink with mixer tap, tiled wall areas. Integrated appliances include electric double oven, 4 ring induction hob, under counter fridge and freezer. Wealth of exposed timbers, wood style flooring with under floor heating, dual aspect windows overlook garden and adjoining countryside.

Living Room 15' 3" x 14' 4" (4.64m x 4.37m)

A delightful room with marble fireplace with bioethanol fuel stove inset, exposed beams, feature wall panelling, wall mounted electric heater, dual aspect windows with fine views.

Utility/Store

A useful room with stone flooring, plumbing for washing machine, double glazed side window.

Bathroom

Stylishly fitted with 3 piece suite including bath with fully tiled walls around and Triton shower unit over, circular basin set to wooden stand with drawers beneath, WC, half panelled wall sections, exposed brickwork and timber frame to one wall, porcelain tile flooring with under floor heating, double glazed side window.

First Floor Landing

Dormer window with views over gardens, exposed timber wall frame and ceiling timber.

Large Walk-in Wardrobe

With hanging rails and shelving.

Bedroom 1 15' 5" x 14' 3" (4.70m x 4.34m)

A stunning room with wall and ceiling timbers, feature dormer window and low level window with lovely views, panelled wall.

Bedroom 2 12' 2" x 7' 4" (3.71m x 2.23m)

Window to the side, exposed wall and ceiling timbers, folding door to built in wardrobe.

Bedroom 3 8' 10" x 6' 9" (2.69m x 2.06m)

Exposed wall and ceiling timbers, window to the side.

Bedrooms 2 and 3 are being knocked into one double bedroom.

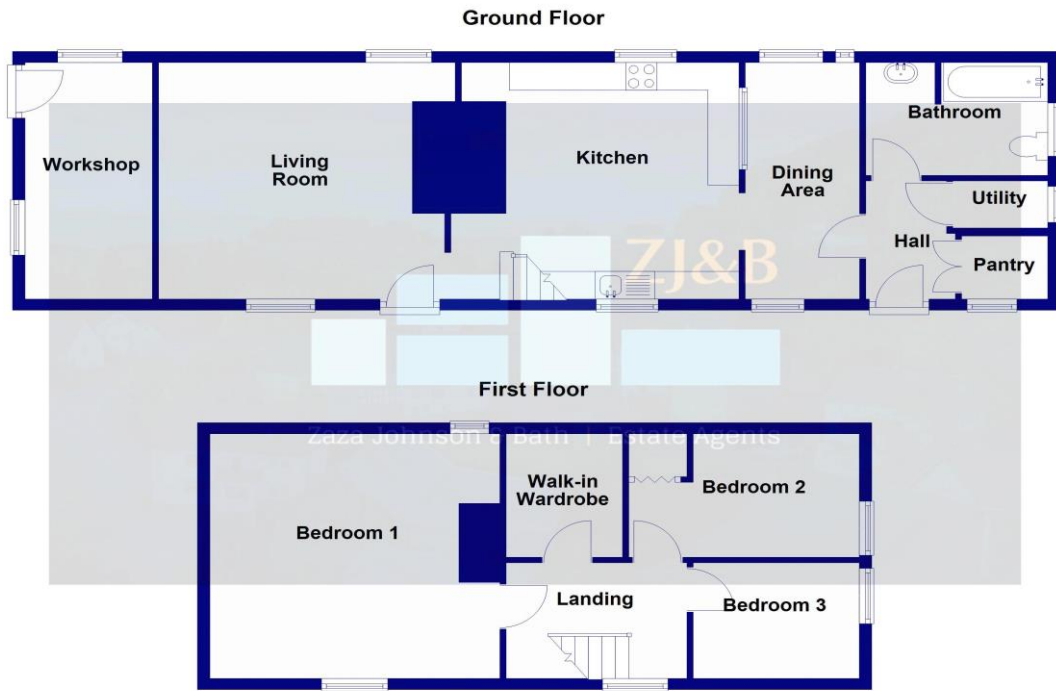
Outside

The property is approached over an extensive driveway with parking forecourt and turning area. The property is set in extensive gardens with spacious lawns, orchard with apple, plum and pear, well stocked beds and borders and excellent views from all aspects.

Council Tax Band D

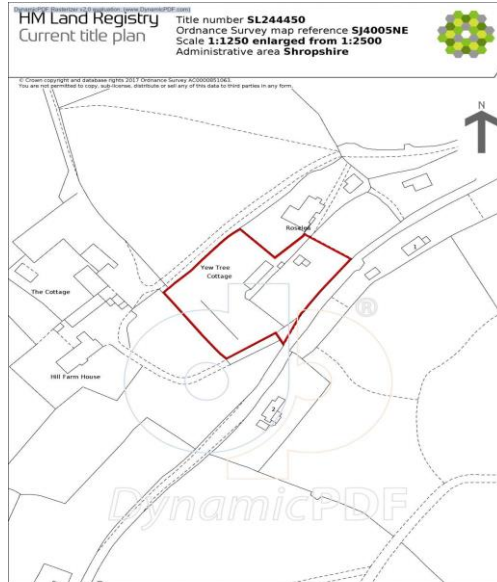
Tenure: Our client advises us that the property is Freehold. Should you proceed with the purchase of the property, these details must be verified by your solicitor.

Viewing: To arrange a viewing call in at our office or telephone **01743 248351**



Bordars Croft, Pontesford Hill

FLOOR PLANS FOR GUIDANCE ONLY



This is a copy of the title plan on 17 MAR 2025 at 12:26:27. This copy does not take account of any application made after that time even if still pending in HM Land Registry when this copy was issued.

This copy is not an 'Official Copy' of the title plan. An official copy of the title plan is admissible in evidence in a court to the same extent as the original. A person is entitled to be indemnified by the registrar if he or she suffers loss by reason of a mistake in an official copy. If you want to obtain an official copy, the HM Land Registry web site explains how to do this.

HM Land Registry endeavours to maintain high quality and scale accuracy of title plan images. The quality and accuracy of any print will depend on your printer, your computer and its print settings. This title plan shows the general position, not the exact line, of the boundaries. It may be subject to distortions in scale. Measurements scaled from this plan may not match measurements between the same points on the ground.

This title is dealt with by HM Land Registry, Telford Office.



FREE MORTGAGE ADVICE

Whether you are a first time buyer, moving home, buying as an investor or looking to save on your mortgage payments, you will benefit from some **free** no obligation mortgage advice. To arrange an appointment with Stephen Bath of Bee Mortgages, who is based at our office, call us on **01743 248351**

Whole of Market, clear and relevant tailored to your individual needs and circumstances.

Your home may be repossessed if you do not keep up repayments on your mortgage