

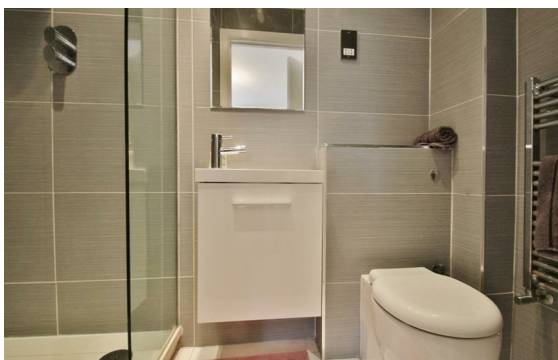
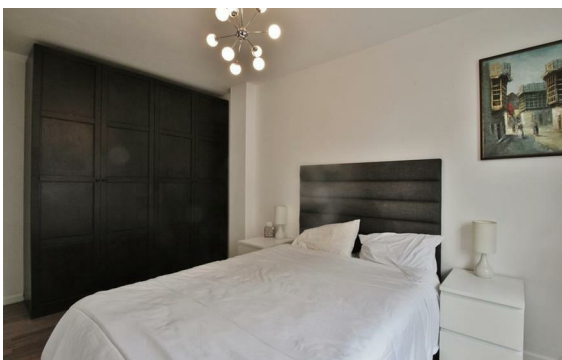


**Sheldon Square, Paddington, London, W2**

Rent £1,000 Per Month

2 Bed | 2 Bath | 1 Reception

*Please call us on 020 7724 2233 or email us [info@newingtonstates.com](mailto:info@newingtonstates.com) to book a viewing.*



The property features a spacious reception room with wooden flooring and access to a private winter garden, a modern kitchen, and two well-proportioned bedrooms.

Ideally located close to Paddington Station, as well as Royal Oak Station and Bayswater Station, offering excellent connectivity across London and beyond. The open green spaces of Hyde Park and Kensington Gardens are also within easy reach.

EPC rating: C

## Energy Efficiency Rating: C

Agents Note: Whilst every care has been taken to prepare these particulars, they are for guidance purposes only. All measurements are approximate and are for general guidance purposes only and whilst every care has been taken to ensure their accuracy, they should not be relied upon and potential buyers/tenants are advised to recheck the measurements.

**NEWINGTON**  
— ESTATES —

60 Upper Montagu Street

London

W1H 1SN

020 7724 2233

[info@newingtonestates.com](mailto:info@newingtonestates.com)

<http://www.newingtonestates.com>