



**Dogridge, Purton - SN5 4DL**  
Wiltshire

In Excess of **£140,000**

**mcfarlane**  
property.com

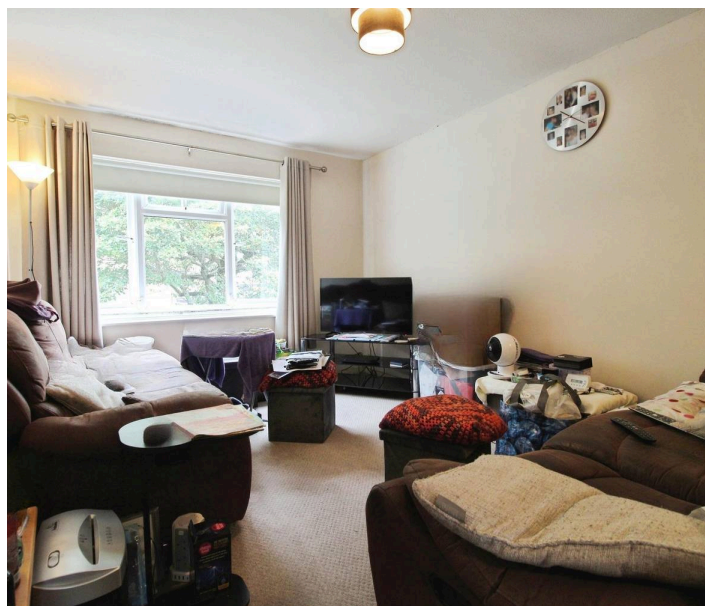
# Dogridge

Purton, Wiltshire

- First Floor Apartment in Purton
- Two Generous Bedrooms
- Kitchen Breakfast + Living Room
- Ideal Investment or First Purchase
- Vacant Possession
- 112 Years Remaining on Lease

A well-presented TWO-Bedroom first floor apartment in a sought-after Purton residential position.

This well-appointed apartment has the added benefits of being bright and airy, well-proportioned and having a generous lease term remaining.



# Dogridge

Purton, Wiltshire

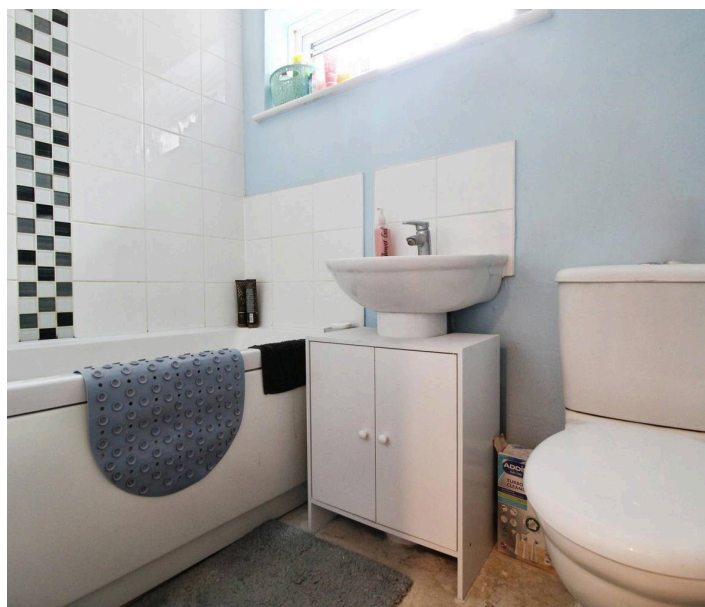
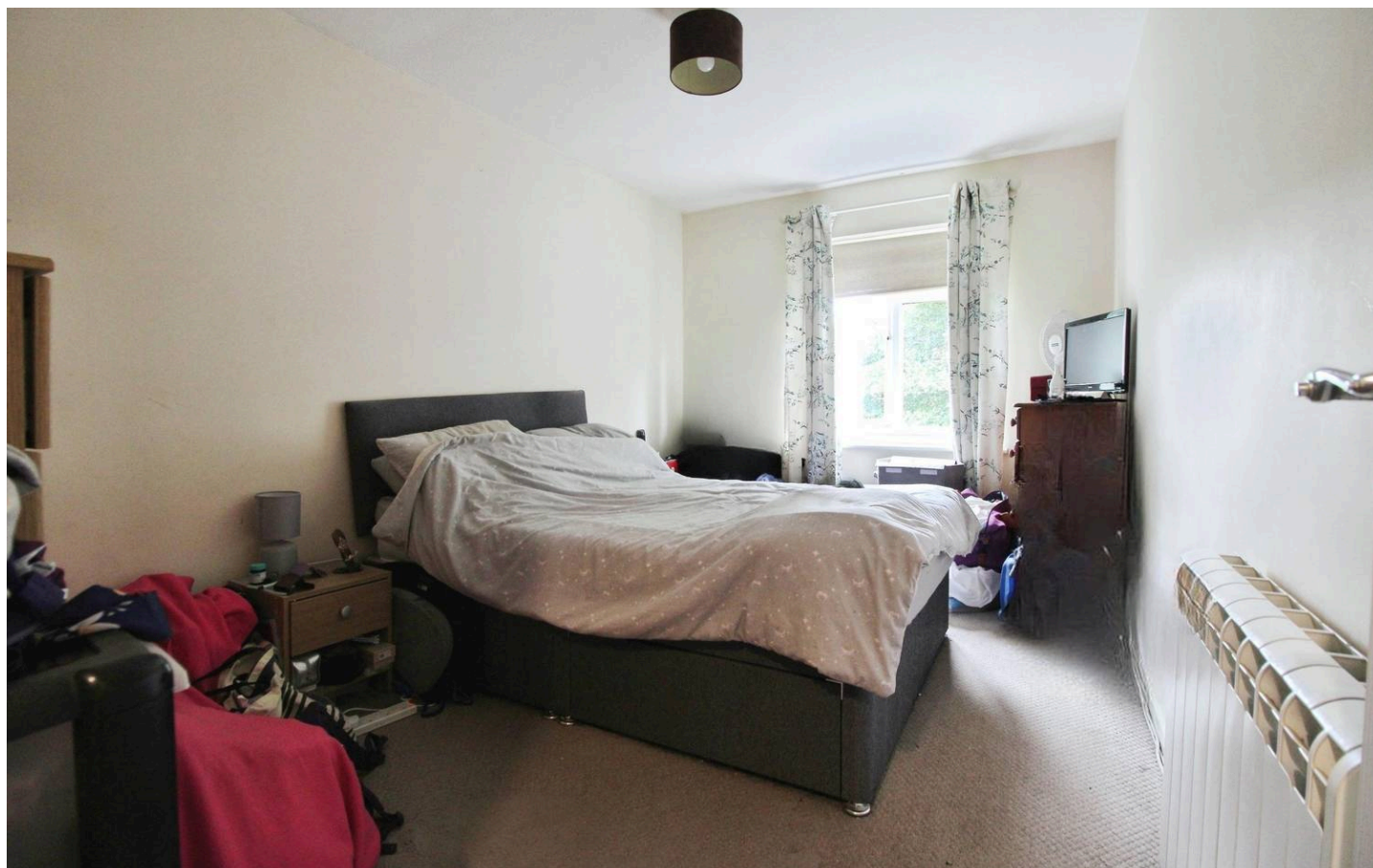
Council Tax band: A

Tenure: Leasehold

EPC Energy Efficiency Rating:

EPC Environmental Impact Rating:

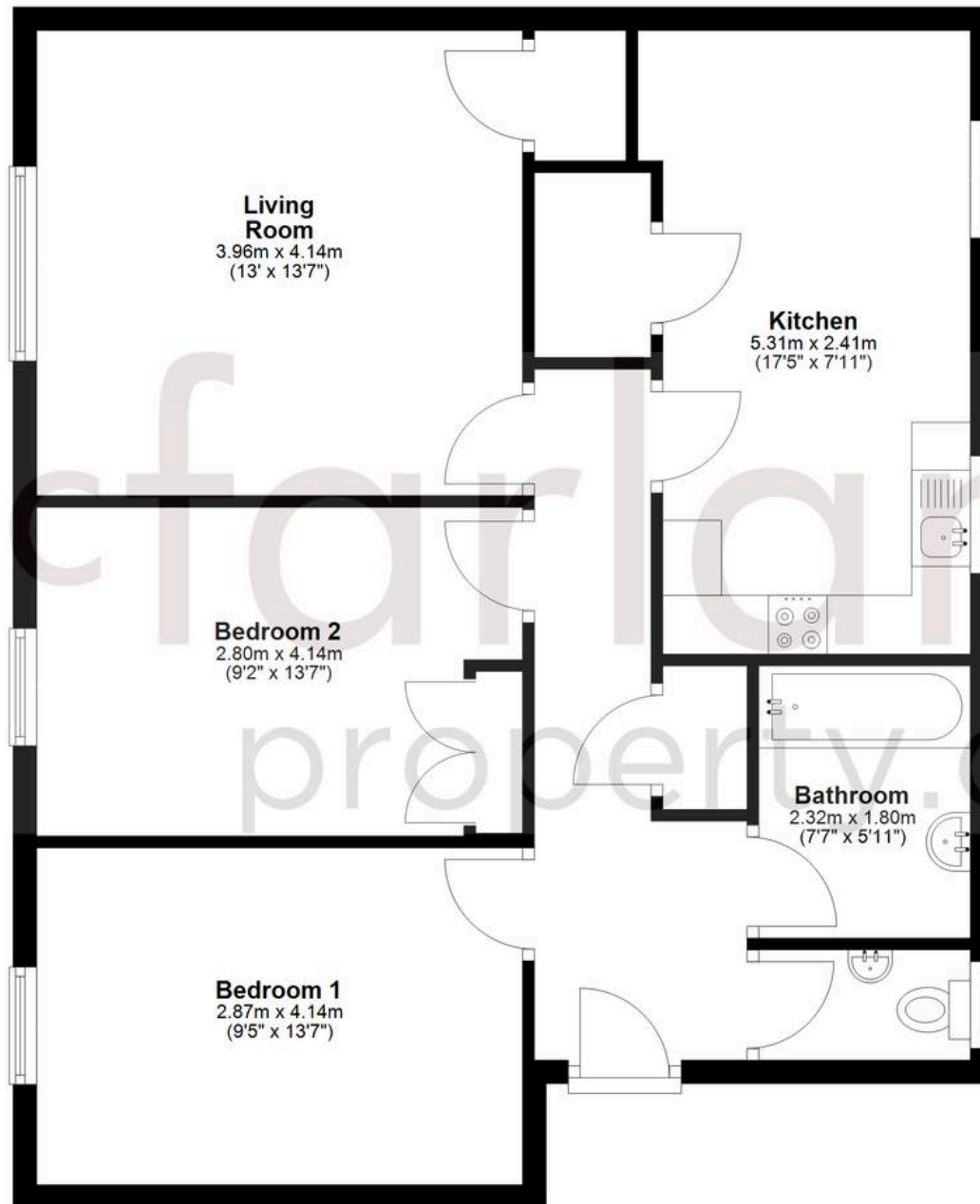
- First Floor Apartment in Purton
- Two Generous Bedrooms
- Kitchen Breakfast + Living Room
- Ideal Investment or First Purchase
- Vacant Possession
- 112 Years Remaining on Lease



**mcfarlane**  
property.com

# Ground Floor

Approx. 73.6 sq. metres (791.9 sq. feet)



Total area: approx. 73.6 sq. metres (791.9 sq. feet)

Agents Note: Whilst every care has been taken to prepare these sales particulars, they are for guidance purposes only. All measurements are approximate and for general guidance purposes only and whilst every care has been taken to ensure their accuracy, they should not be relied upon and potential buyers are advised to recheck the measurements.