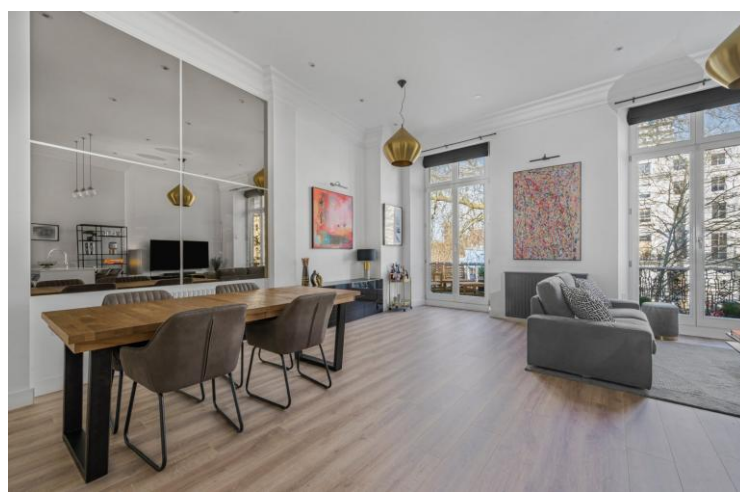




St. Stephens Gardens
Notting Hill, W2

CHESTERTONS





A rare opportunity to acquire a Grade II listed Victorian end-of-terrace building on the sought-after St. Stephen's Gardens in Notting Hill. This elegant stucco-fronted period property has been converted into eight self-contained apartments, comprising three two-bedroom flats and five one-bedroom flats, generating a combined rental income of approximately £22,420 per month.

Overlooking the picturesque communal garden square, the building enjoys a prime location with easy access to the vibrant boutiques, cafes, and restaurants of Westbourne Grove and Queensway. Excellent transport links are within reach, with Westbourne Park underground station (Circle and Hammersmith & City lines) just 0.4 miles away, and Notting Hill Gate underground station (Central, District & Circle lines) 0.7 miles away.

- Grade II listed Victorian end-of-terrace on prestigious St. Stephen's Gardens
- Converted into 8 apartments — 3 two-beds, 5 one-beds
- Generating c.£22,420 per month rental income
- Attractive stucco-fronted period building overlooking a communal garden square
- Prime Notting Hill location close to Excellent transport links and Westbourne Grove, Queensway and Portobello Road

Asking Price £6,995,000

Energy Efficiency Rating		Current	Potential
95-100	A		
81-95	B		
69-81	C	78	78
55-69	D		
39-55	E		
21-39	F		
1-21	G		

Not energy efficient - higher running costs

EU Directive 2002/91/EC
England, Scotland & Wales

Tenure: Freehold

Local Authority: Westminster

Council Tax Band: E

Chestertons Notting Hill Sales

30 Ledbury Road
Notting Hill
London
W11 2AB

nottinghill@chestertons.co.uk

0203 040 8585

chestertons.co.uk



Approx Gross Internal Area 5242 Sq Ft - 487 Sq M
 (Excluding Vaults & Restricted Head Height)
 Reduced Height Area 39 Sq Ft - 3.60 Sq M
 Vaults Area 111 Sq Ft - 10.30 Sq M

For Illustration Purpose Only - Not To Scale

Chesterton UK Services Limited trading as Chestertons for themselves and for the vendor of this property whose agents they are, give notice that (i) these particulars do not constitute any part of an offer or contract, (ii) all statements contained within these particulars are made without responsibility on the part of Chestertons or the vendor, (iii) whilst made in good faith, none of the statements contained within these particulars are to be relied upon as a statement or representation of fact, (iv) any intending purchasers must satisfy themselves by inspection or otherwise as to the correctness of each of the statements contained within these particulars, (v) the vendor does not make or give either Chestertons or any person in their employment any authority to make or give representation or warranty whatsoever in relation to this property. Wide angle lenses may be used. ©Copyright Chestertons | Chesterton UK Services Limited | Registered Office 40 Connaught Street, Hyde Park, London W2 2AB Registered Company Number 05334580.



This paper is
100% recyclable