



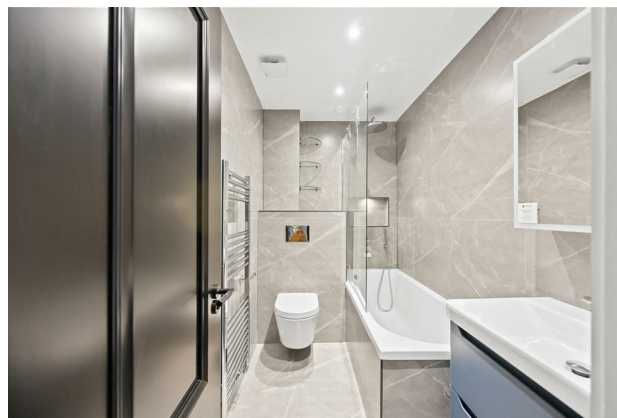
Gondar Gardens NW6

Parkheath  
*Sold on Service*









## Gondar Gardens, NW6

### £1,250,000

### Leasehold

- Brand newly refurbished three bedroom garden apartment
- Meticulously finished to an exceptionally high standard throughout
- Set within a charming Victorian conversion
- Beautifully landscaped 100 ft south facing private garden
- Three well-proportioned double bedrooms, with bespoke fitted wardrobes in both the principal and second bedrooms
- Three elegantly designed modern bathrooms, with two serving as luxurious ensembles
- Bright and spacious open-plan kitchen/reception area, complete with a contemporary island and breakfast bar
- Ideally located to the green open spaces of Fortune Green and the vibrant shops, cafés, and transport links of West Hampstead
- Chain free
- EPC Rating: D, Council Tax: Camden band D

Belsize Park/Hampstead  
208 Haverstock Hill  
NW3 2AG  
Sales 020 7431 1234  
Lettings 020 7431 3104  
[nw3@parkheath.com](mailto:nw3@parkheath.com)

South/West Hampstead  
192 West End Lane  
NW6 1SG  
Sales & Lettings  
Tel 020 7794 7111  
[192@parkheath.com](mailto:192@parkheath.com)

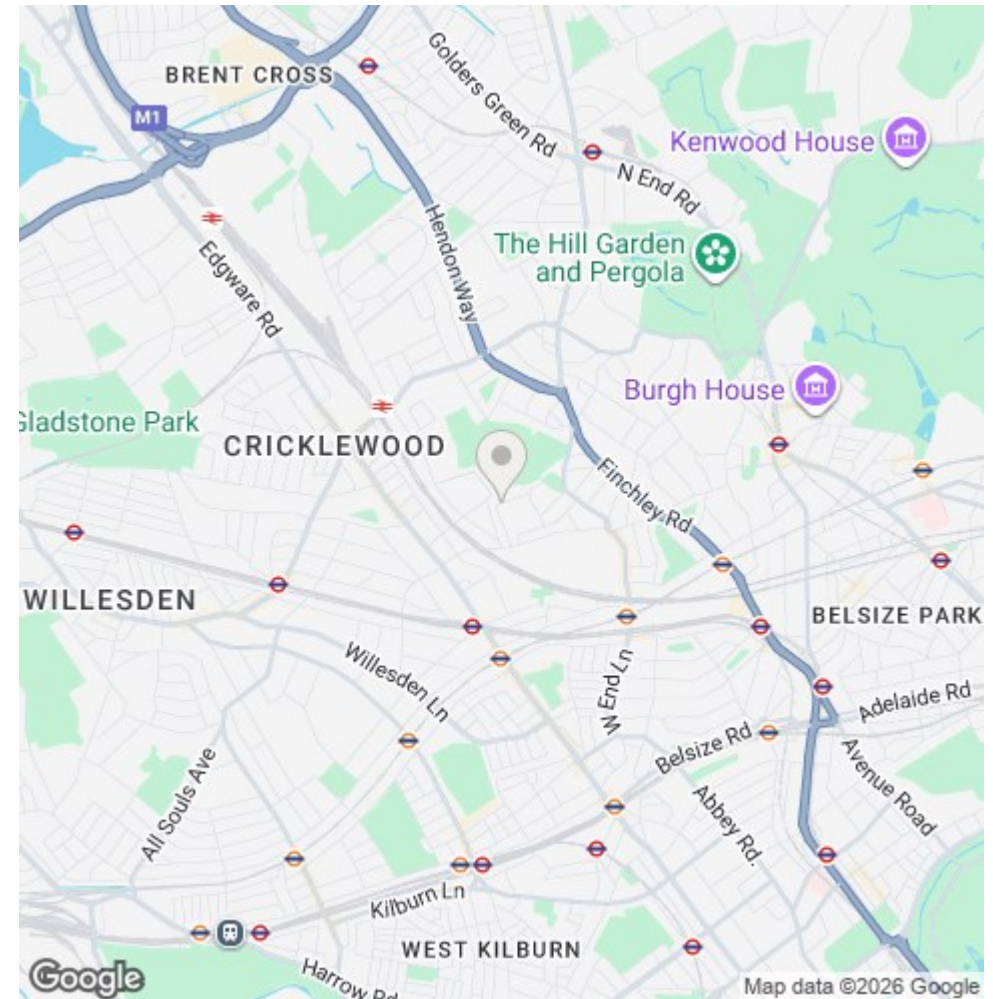
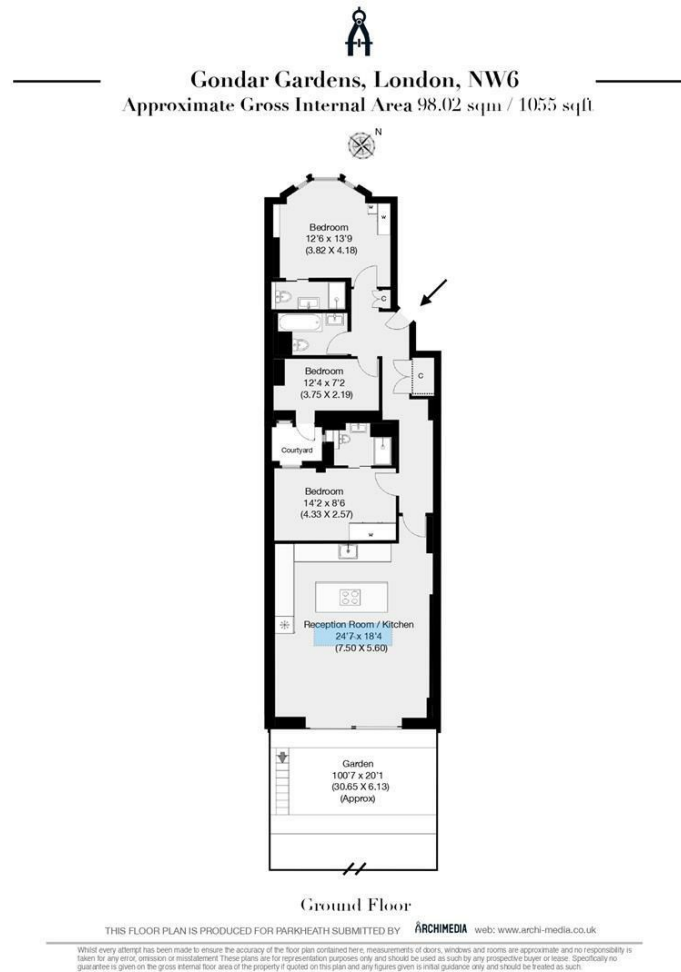
Kensal Rise  
54-56 Chamberlayne Rd  
NW10 3JH  
Tel 020 8960 4845  
[kensal@parkheath.com](mailto:kensal@parkheath.com)

Property Management  
192 West End Lane  
NW6 1SG  
020 7433 6174  
[pm@parkheath.com](mailto:pm@parkheath.com)

[www.parkheath.com](http://www.parkheath.com)

**Parkheath**  
*Sold on Service*

**Camden Tax band**



The particulars do not constitute part of an offer or contract. The particulars, including text, photographs and plans, are for the guidance only of prospective purchasers/tenants and must not be relied upon as statements of fact. The descriptions provided therein represent the opinion of the author and whilst given in good faith should not be construed as statements of fact. Nothing in these particulars shall be deemed a statement that the property is in good condition or otherwise or that any services or facilities are in good working order. All measurements are approximate