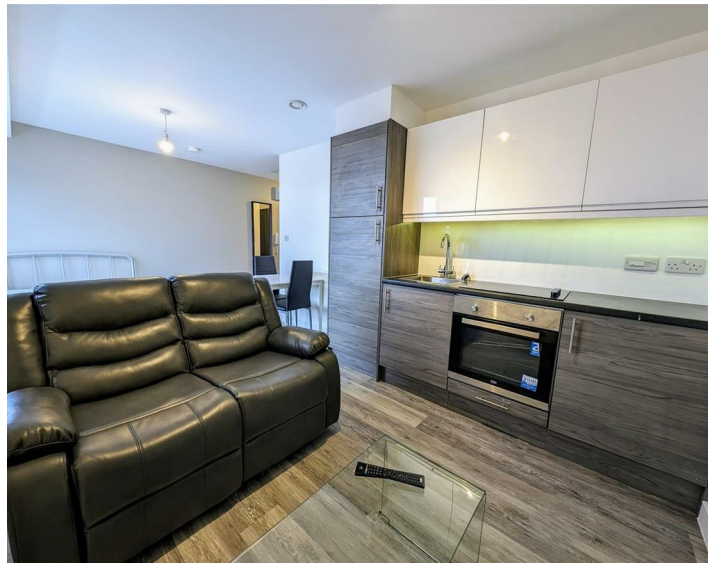




Apt 80 4 Leigh Street, Liverpool, L1 1NT
£750 PCM

www.
cityresidential
.co.uk



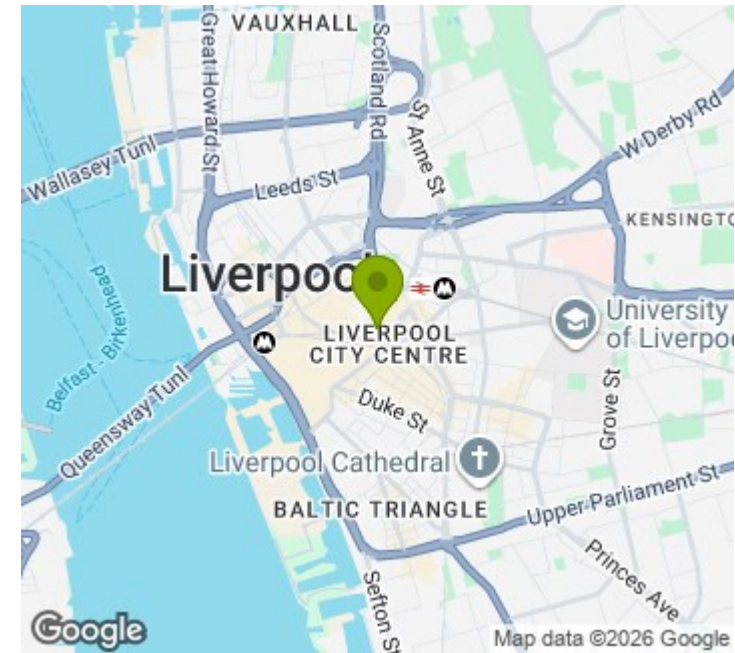
About the Property

Available to Let is this well presented top floor studio in the heart of Liverpool City Centre. Situated on Leigh Street, it is ideally located for all the amenities the city centre has to offer and is just a short walk from both Liverpool Central and Liverpool Lime Street Stations.

The accommodation further benefits from double glazing and integrated white goods in the kitchen. This development is serviced by a lift to all floors. There is no parking available with this apartment.

Call us now 0151 231 6100 to arrange a viewing.

- EPC Rating - C
- Council Tax Band - A
- No Parking
- Fully Furnished Studio Apartment
- Top Floor
- Available Now
- Headlease Restriction: No Pets



Energy Efficiency Rating

	Current	Potential
Very energy efficient - lower running costs		
(92 plus) A		
(81-91) B		
(69-80) C	75	75
(55-68) D		
(39-54) E		
(21-38) F		
(1-20) G		
Not energy efficient - higher running costs		
England & Wales	EU Directive 2002/91/EC	



City Residential

81/87 Victoria Street, The Old Haymarket, Liverpool L1 6DG

T: 0151 231 6100 F: 0151 231 6105

E: sales@cityresidential.co.uk



WWW.
cityresidential
.co.uk