



Blue Court

Sherborne Street, N1

Asking Price £550,000

A bright and spacious 2 double bedroom apartment set on the ground floor of this low-rise private development in the heart of De Beauvoir.

CHESTERTONS



Blue Court

Sherborne Street, N1

- 2 double bedrooms
- Ground floor
- Private entrance
- Moments from the amenities of Southgate Road



A bright and spacious 2 double bedroom apartment set on the ground floor of this low-rise private development in the heart of De Beauvoir. The property is well-proportioned comprising; 2 double bedrooms; additional study space; semi-open plan kitchen/living dining space with contemporary kitchen; spacious family bathroom. The property is conveniently located for access to Islington, Hoxton and Shoreditch, with an array of trendy bars, restaurants, galleries and boutique shops. Haggerston Overground, Old Street Underground (Northern Line), Essex Road (National Rail) and Highbury & Islington station (National Rail & Victoria Line) are the closest stations. Greenery can be found locally at Rosemary Gardens & Shoreditch Park, with the walks of the canal easily accessible. The bus routes of Southgate Road and New North Road provide good links to the City. The delights of the renowned De Beauvoir Deli are just moments away.

Tenure: Leasehold 106 years 9 months

Service Charge: £2384

Ground Rent: £200

Local Authority: Islington Council

Council Tax Band: E

Chestertons Islington Sales

327-329 Upper Street

Islington

London

N1 2XQ

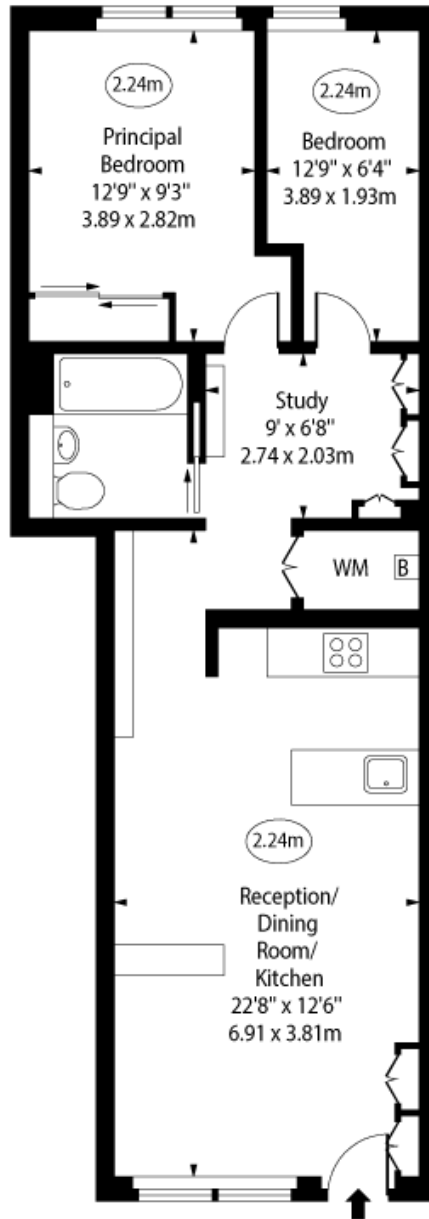
islington@chestertons.co.uk

020 7359 9777

chestertons.co.uk

Blue Court,
Sherborne Street, N1

○ - Ceiling Height



Ground Floor

Approx Gross Internal Area 659 Sq Ft - 61.22 Sq M

Every attempt has been made to ensure the accuracy of the floor plan shown. However, all measurements, fixtures, fittings, and data shown are approximate interpretations and for illustrative purposes only. Measured according to the RICS. Not To Scale.

www.goldlens.co.uk
Ref. No. 031298M

