



**POOLE
TOWNSEND**

18 Cartmel Lodge Park, Cartmel

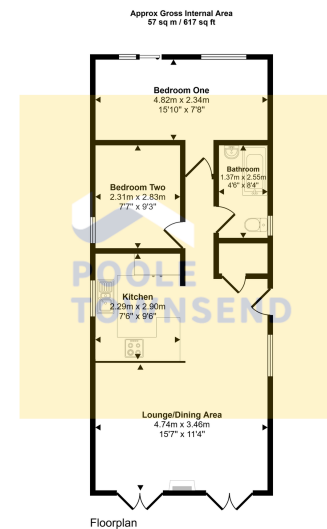
£215,000

🛏️ 2 🚿 1 🚗 1



- Located in the heart of Cartmel village
- Peaceful riverside setting beside the River Eea
- Bright open-plan living space
- Two double bedrooms with fitted furniture
- Stylish modern shower room
- Offered fully furnished with no onward chain
- Glazed doors leading to elevated decked terrace
- Outdoor lawned and patio seating areas plus private parking for 2 cars
- Near Lake District National Park with 12-month holiday occupancy
- Leasehold





This floorplan is only for illustrative purposes and is not to scale. Measurements of rooms, doors, windows, and any items are approximate and no responsibility is taken for any error, omission or mis-statement. Icons of items such as bathroom suites are representations only and may not look like the real items. Made with Made Snappy 360.

Situated in the heart of the sought-after village of Cartmel, 18 Cartmel Lodge Park is a beautifully appointed contemporary lodge in a peaceful riverside setting. Offered fully furnished with no onward chain, this superb holiday home enjoys a picturesque position alongside the River Eea, just a short walk from Michelin-starred restaurants, independent shops, cafés and local attractions. Located on the edge of the Lake District National Park, the accommodation comprises two double bedrooms with fitted furniture, a stylish shower room, and a bright open-plan living space with glazed doors opening onto an elevated decked terrace. Outside, there are lawned and patio seating areas together with private parking for two vehicles. Benefiting from 12-month holiday occupancy and no Council Tax, it offers an ideal holiday retreat or investment opportunity. Holiday use only; not a permanent residence.

Visit us at
www.pooletownsend.co.uk
enquiries@pooletownsend.co.uk

We are open
 Monday – Friday 9.00 – 5.00
 Saturday 9.00 – 1.00

Barrow 01229 811811
 Ulverston 01229 588111
 Grange 015395 33316
 Kendal 01539 734455
 Milnthorpe 015395 62044