

# BARTON FLEMING

INDEPENDENT ESTATE AGENTS



**5 Building 35, The Parade, Caversfield, Bicester, OX27 8AD**

# BARTON FLEMING

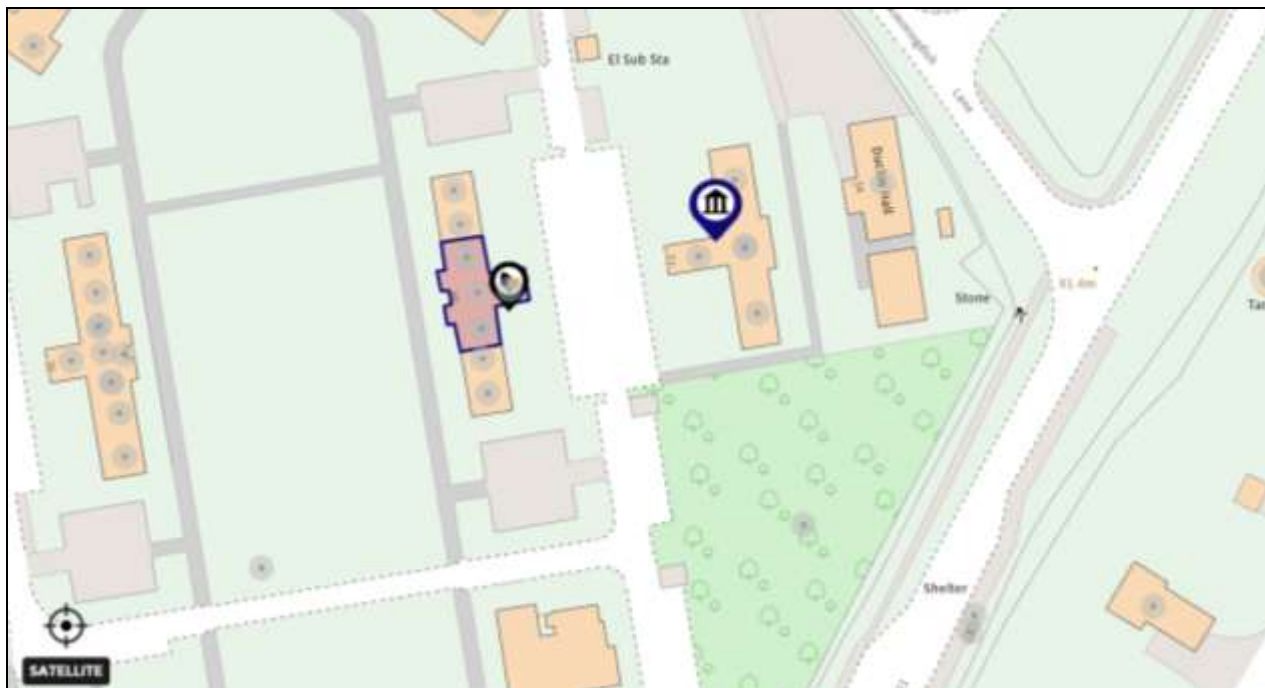
INDEPENDENT ESTATE AGENTS

Web: [www.bartonfleming.co.uk](http://www.bartonfleming.co.uk)  
E-mail: [info@bartonfleming.co.uk](mailto:info@bartonfleming.co.uk)  
62 North Street, Bicester. OX26 6NF

Tel: Bicester (01869)

## 249922

### 5 Building 35, The Parade, Caversfield, Bicester, OX27 8AD



**Located in the Sought After Garden Quarter, A Two Bedroom  
Maisonette with Lounge Diner, Kitchen, Bathroom and  
Two Allocated Parking Spaces.**

**LEASEHOLD**

**£ 365,000**

- ❖ Entrance Hall
- ❖ Cloakroom
- ❖ Lounge Diner
- ❖ Kitchen
- ❖ Landing
- ❖ Two Bedrooms
- ❖ Bathroom
- ❖ Two Allocated Parking Spaces (Nos. 327 and 328)
- ❖ Private Communal Grounds

VIEWING  
APPOINTMENT:

DAY:

TIME:

# BARTON FLEMING

INDEPENDENT ESTATE AGENTS

Web: [www.bartonfleming.co.uk](http://www.bartonfleming.co.uk)  
E-mail: [info@bartonfleming.co.uk](mailto:info@bartonfleming.co.uk)  
62 North Street, Bicester. OX26 6NF

Tel: Bicester (01869)

## 249922

### Key Facts for Buyers:

**EPC:** Rating of C (70).  
**Council Tax:** Band C  
Approx. £2,190 per annum.

### Leasehold Information:

**Freeholder:** City & Country Bicester Limited  
**Lease Length:** 175 years from 01/07/2012  
**Ground Rent:** £250 per annum (reviewed every 12 years)  
**Management Company:** Encore  
**Management Fees:** £1,800 per annum (payable every 6 months)

### Ground Floor:

Outside ground level gas meter box, outside courtesy light, wooden front door to:

#### **ENTRANCE HALL: 11'10 x 7'8 narrowing to 3'2 by door**

Plain plaster ceiling, Oak flooring, Oak turning staircase, radiator.

#### **CLOAKROOM: 4'5 x 4'3 (max)**

Side aspect Crittal window and plantation style shutters, plain plaster ceiling, downlighting, extractor fan, chrome heated towel rail, concealed cistern dual flush WC, corner wash hand basin.

#### **LOUNGE DINER: 16'8 x 16'8**

Front and side aspect and two rear aspect windows with plantation style shutters, plain plaster ceiling (9'4" ceiling height), two radiators, Oak flooring, TV point, "Virgin" box, telephone point, digital central heating thermostat.

#### **KITCHEN: 8'11 x 7'8**

Side aspect Crittal window with plantation style shutters, plain plaster ceiling, downlighting, RCD/MCB electricity consumer unit, radiator, ceramic tiled floor. Range of base and eye level units, roll edge laminate worksurfaces, acrylic upstands, 300mm tall unit housing integrated fridge freezer (1400mm fridge/650mm 3-drawer freezer), 300mm cutlery and pan drawer, stainless steel and glass fan oven/oven grill, 4-ring stainless steel hob, acrylic splashback, pull out extractor hood, 150mm slide out rack, 800mm corner base unit with 400mm door, integrated dishwasher, 1000mm undersink corner base unit with 400mm door, 1½ bowl stainless steel sink.

### First Floor:

#### **STAIRCASE AND LANDING: 8'9 x 7'4 widening to 7'8**

Side aspect Crittal window with plantation style shutters, plain plaster ceiling.

#### **INNER LANDING:**

Front and rear aspect Crittal window with plantation style shutters, plain plaster ceiling, access to loft space (*drop down ladder, hard wired light, boarded for access to Glowworm boiler*).

#### **BATHROOM: 8'10 x 7'8**

Side aspect Crittal window with plantation style shutters, plain plaster ceiling, downlighting, ceramic tiled floor, chrome heated towel rail, large mirror and downlights, panel enclosed bath with mixer tap shower attachment, sliding head support, screen, wall hung wash hand basin, concealed cistern dual flush WC.

#### **BEDROOM ONE: 13'8 x 8'9**

Twin rear aspect Crittal windows with plantation style shutters, plain plaster ceiling, radiator, "Virgin" point, TV point.

#### **BEDROOM TWO: 13'7 x 8'4**

Front aspect Crittal window with plantation style shutters, plain plaster ceiling, radiator, "Virgin" point, TV point.

### Outside:

**COMMUNAL GROUNDS:** refer to photographs

### **PARKING:**

Allocated parking for two cars (*Nos. 327 and 328*).

# BARTON FLEMING

INDEPENDENT ESTATE AGENTS

Web: [www.bartonfleming.co.uk](http://www.bartonfleming.co.uk)  
E-mail: [info@bartonfleming.co.uk](mailto:info@bartonfleming.co.uk)  
62 North Street, Bicester. OX26 6NF

Tel: Bicester (01869)

## 249922



Side View of Building



Front Door



Entrance Hall and Cloakroom



Lounge Diner



Lounge Diner



Lounge Diner



Kitchen

# BARTON FLEMING

INDEPENDENT ESTATE AGENTS

Web: [www.bartonfleming.co.uk](http://www.bartonfleming.co.uk)  
E-mail: [info@bartonfleming.co.uk](mailto:info@bartonfleming.co.uk)  
62 North Street, Bicester. OX26 6NF

Tel: Bicester (01869)

249922



Kitchen



Turning Staircase



Inner Landing



Bathroom



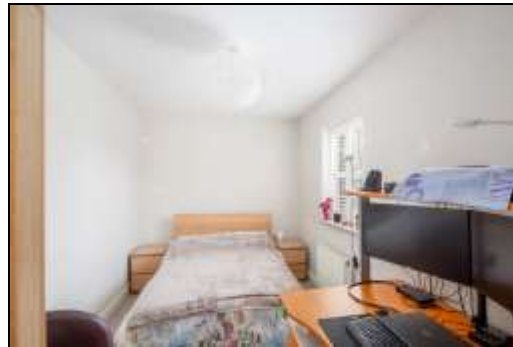
Bedroom One



Bedroom One



Bedroom Two



Bedroom Two

# BARTON FLEMING

INDEPENDENT ESTATE AGENTS

Web: [www.bartonfleming.co.uk](http://www.bartonfleming.co.uk)  
E-mail: [info@bartonfleming.co.uk](mailto:info@bartonfleming.co.uk)  
62 North Street, Bicester. OX26 6NF

Tel: Bicester (01869)

## 249922



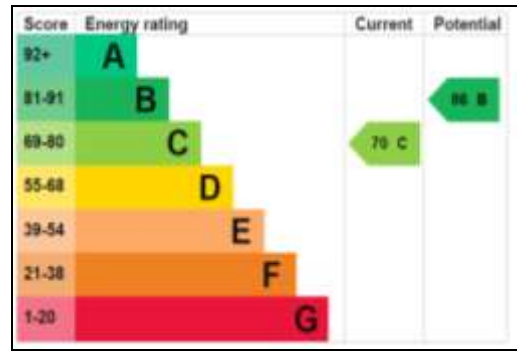
Allocated Parking Spaces



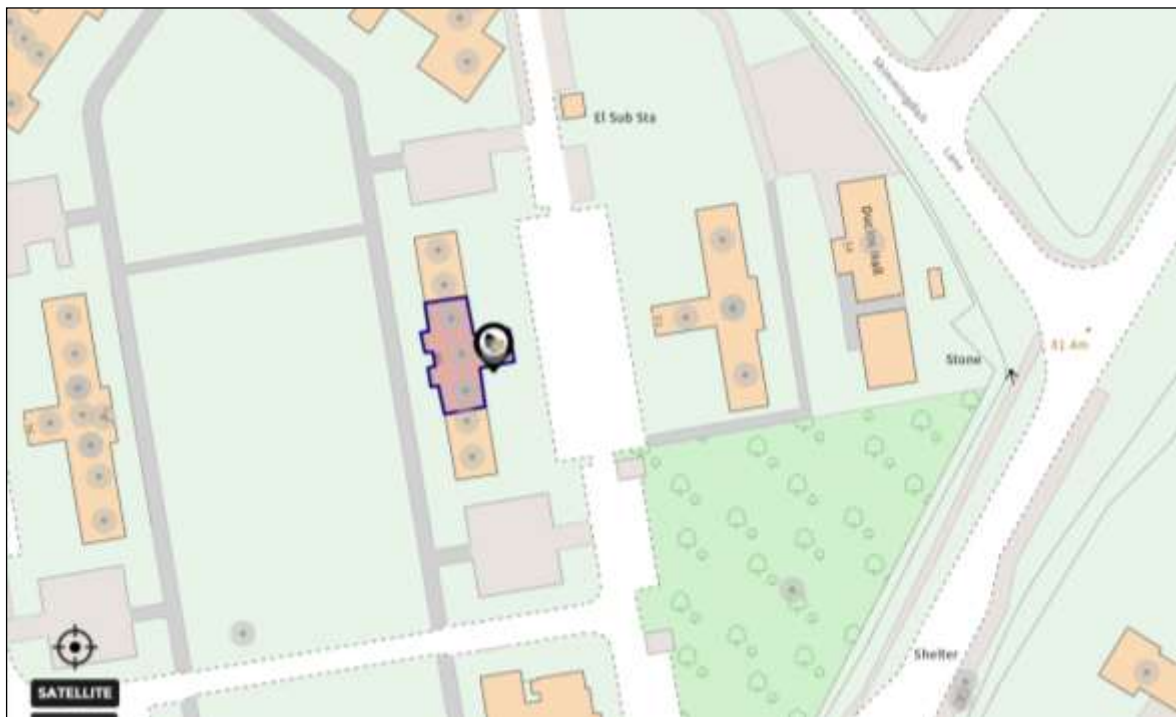
View to Rear of Block



Communal Park



EPC



# BARTON FLEMING

INDEPENDENT ESTATE AGENTS

Web: [www.bartonfleming.co.uk](http://www.bartonfleming.co.uk)  
E-mail: [info@bartonfleming.co.uk](mailto:info@bartonfleming.co.uk)  
62 North Street, Bicester. OX26 6NF

Tel: Bicester (01869)

249922

**Space for Notes**

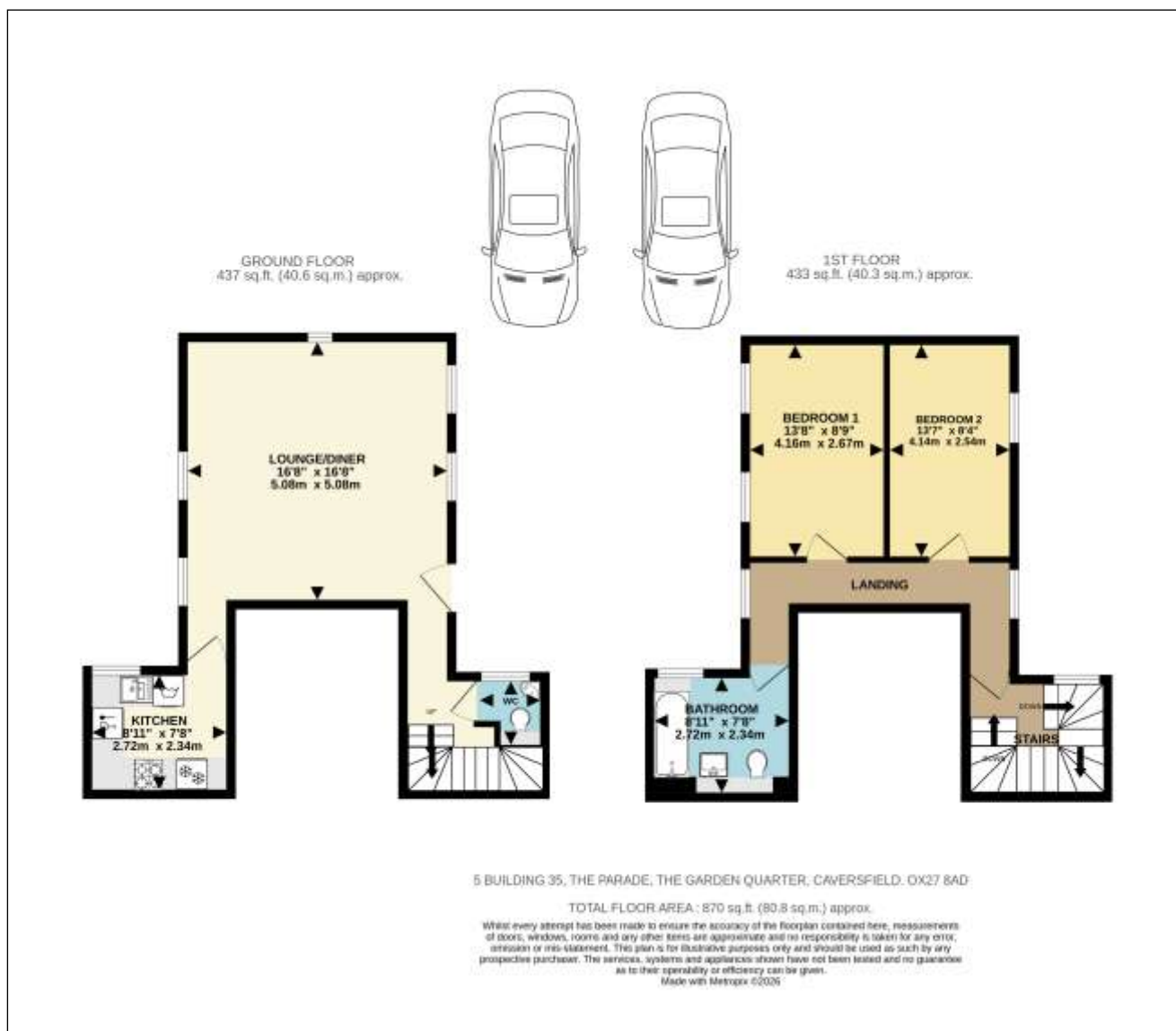
# BARTON FLEMING

INDEPENDENT ESTATE AGENTS

Web: [www.bartonfleming.co.uk](http://www.bartonfleming.co.uk)  
E-mail: [info@bartonfleming.co.uk](mailto:info@bartonfleming.co.uk)  
62 North Street, Bicester. OX26 6NF

Tel: Bicester (01869)

## 249922



These particulars do not constitute any part of an offer or a contract. Whilst every care has been taken to ensure accuracy, no responsibility for errors or mis-description is accepted. Any intending purchaser must satisfy himself by inspection or otherwise as to the correctness of each of the statements in these particulars. The vendor does not make or give and neither Barton Fleming nor any person in their employment, has authority to make or give any representation or warranty whatsoever in relation to this property. Land Registry Plans are provided as guidance only and while LRP documents are generated from what is registered at the point at when the plans are downloaded for use in these particulars they are not guaranteed to represent the property title at any given moment. Buyers should satisfy themselves through their solicitor as to the accuracy of the land registration at any given moment.