



## Battersea Church Road, SW11

£270,000

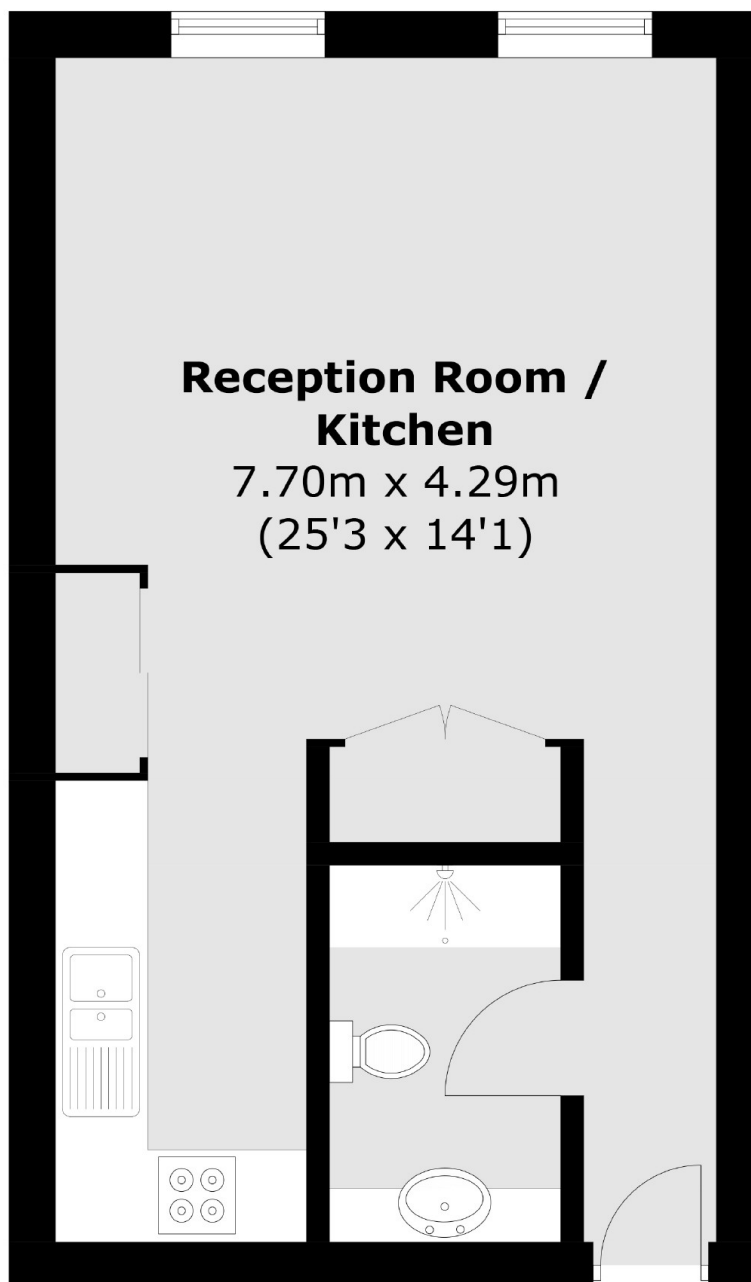
A well presented first floor studio apartment set moments from Clapham Junction Station. The property includes an open plan kitchen/living area, three piece bathroom and fitted wardrobes. The property further benefits from access to outside space (communal balcony), has an option for a parking space via separate negotiation and is also being sold chain free.

Battersea Church Road is a popular location set close to the green open spaces of Wandsworth Common. It is a short walk to Northcote Road, Clapham Junction station and offers an array of bars, restaurants and shopping amenities nearby.

### Features

- Studio Apartment
- Open Plan Living
- Modern Bathroom
- Bright And Airy
- Superb Location
- Communal Balcony

# Battersea Church Road, London, SW11



Total area (approx.): 33.1 sq. m (356.2 sq. ft)

**Dexters**

Northcote Road  
93 St. John's Road  
London  
SW11 1QY  
Sales  
020 7483 6333

Energy Rating: D. We aim to make our particulars both accurate and reliable. However they are not guaranteed; nor do they form part of an offer or contract. If you require clarification on any points then please contact us, especially if you're traveling some distance to view. Please note that appliances and heating systems have not been tested and therefore no warranties can be given as to their good working order.

 **RICS** | Regulated  
Estate Agent  
and Letting Agent

[dexters.co.uk](http://dexters.co.uk)