



## Holland Road, W14

£600,000

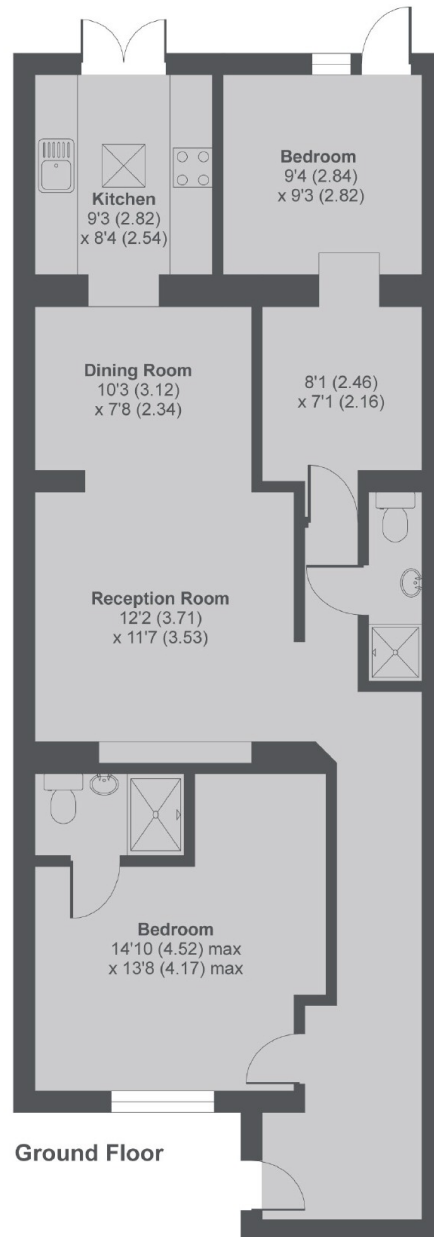
This well-presented two-bedroom property features a spacious open-plan reception and kitchen area leading onto a private garden, along with two double bedrooms and two bathrooms.

Holland Road is well positioned within the Royal Borough and close to the transport and shopping facilities of Holland Park, Westfield and High Street Kensington.

### Features

Offers In Excess Of  
Two Bedrooms  
Two Bathrooms  
Private Garden  
Private Entrance  
Approx 908sqft

# Holland Road, London, W14



## Holland Road, W14

MAIN HOUSE APPROX FLOOR AREA 908 SQ.FT 84.3 SQ.M

Copyright nichecom.co.uk 2017 Produced for Dexters REF : 193619

# Dexters

Shepherds Bush and Brook Green  
53 Shepherds Bush Green  
London  
W12 8PS  
Sales  
020 8740 2900

Energy Rating: C. We aim to make our particulars both accurate and reliable. However they are not guaranteed; nor do they form part of an offer or contract. If you require clarification on any points then please contact us, especially if you're traveling some distance to view. Please note that appliances and heating systems have not been tested and therefore no warranties can be given as to their good working order.

 **RICS** | Regulated  
Estate Agent  
and Letting Agent

dexters.co.uk