



Edith Terrace, SW10

£692 Per week

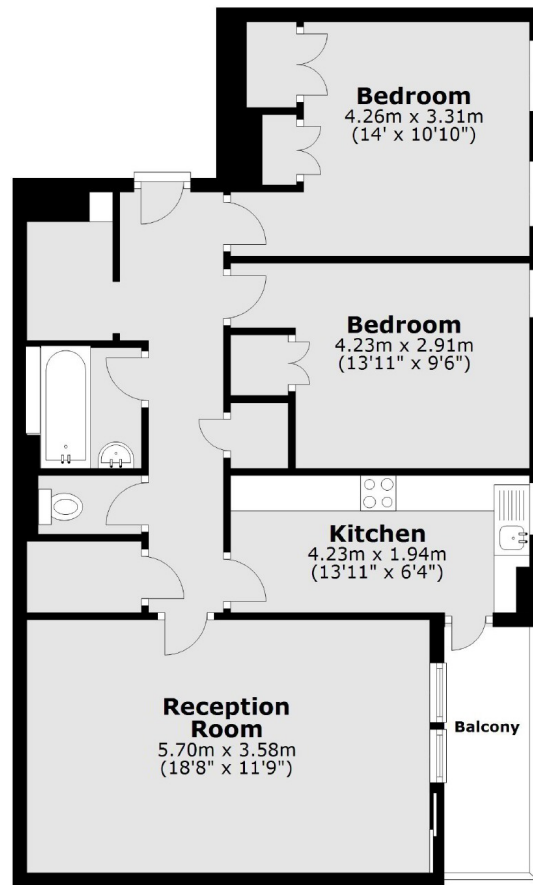
A beautifully presented two double bedroom property, ideally located between the Kings Road and Fulham Road. This recently renovated lateral two bedroom flat offers laminate floors throughout and a very modern kitchen.

Nevill Court is a well maintained building on Edith Terrace close to the boutiques, restaurants and transport links of both the Fulham Road and Kings Road.

Features

- Two Bedrooms
- Fourth Floor
- Separate Kitchen
- Private Balcony
- Lift Access
- Recently Refurbished

Edith Terrace, London, SW10



Total area: approx. 73.5 sq. metres (790.9 sq. feet)