



ABBEVILLE ROAD, SW4

£1,950,000

- Five Bedrooms
- Three Bathrooms
- 2,236 Sq Ft
- Stunning Condition
- Large Rear Garden
- Chain Free





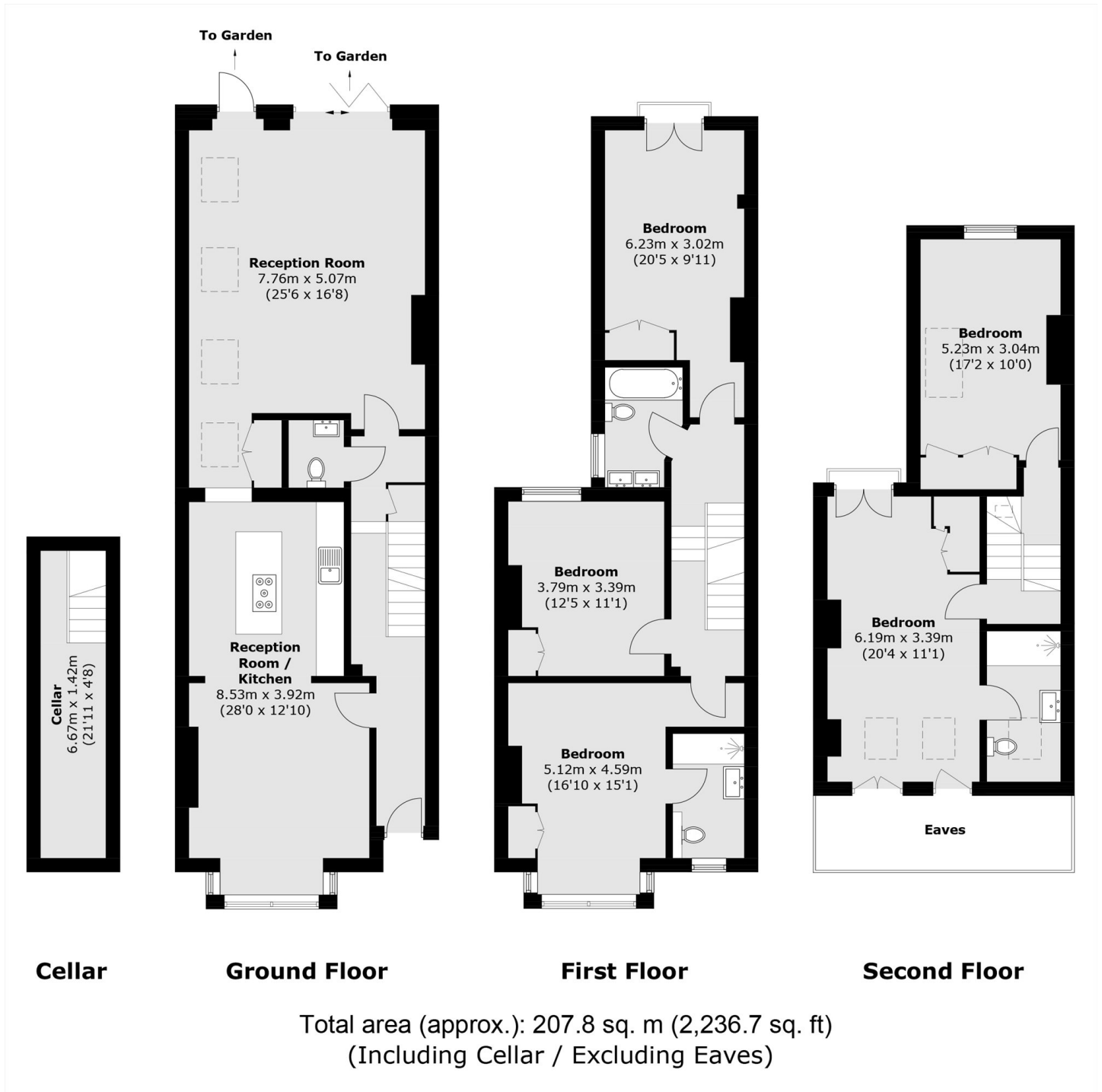
ABOUT THE HOME

Spanning more than 2,200 sq. Ft., this impressive property offers a perfect blend of traditional character and contemporary living. The ground floor features a charming front reception room alongside a sleek, modern kitchen complete with a central island and dining area. This flows seamlessly into a substantial rear extension, currently arranged as a spacious living room with direct access to a sunny private garden. Arranged across the upper floors is a generous principal suite with an en-suite bathroom, complemented by four further bedrooms, two additional bathrooms, and a private roof terrace.

Abbeville Road is a picturesque tree-lined street ideally positioned close to the boutique shops, cafés, and restaurants of Abbeville Village. Abbeville Village is renowned for its vibrant neighbourhood atmosphere, while both Clapham South station and Clapham Common station are within easy reach, alongside the open green spaces of Clapham Common.






JACKSONS CLAPHAM

73 Abbeville Road, London,
 SW4 9JN
 Sales: 020 8487 3177
 Lettings: 020 8487 3178

Energy Rating: C We aim to make our particulars both accurate and reliable. However they are not guaranteed; nor do they form part of an offer or contract. If you require clarification on any points then please contact us, especially if you're traveling some distance to view. Please note that appliances and heating systems have not been tested and therefore no warranties can be given as to their good working order.