



Walkers
People & Property

Riffhams Lane, Danbury. CM3 4DS
£750,000



Riffhams Lane

Danbury, CM3 4DS

Cransley Cottage is a beautifully proportioned four-bedroom semi-detached home offering an exceptional sense of space in a highly desirable non-estate setting.

The property is thoughtfully arranged, beginning with a welcoming entrance that leads through to a cosy front lounge featuring a bay window with built-in seating and a charming woodburner, creating a warm and inviting focal point.

To the rear, the home opens into a superb extended kitchen/diner, designed as the heart of the house, with direct access to the garden and ample space for both family living and entertaining. A separate utility room and downstairs WC add practicality, while the integral garage presents exciting potential for conversion into an additional reception room, ideal for growing or multi-generational families.

Upstairs, the cottage continues to impress with generous accommodation throughout. There are three well-proportioned double bedrooms alongside a comfortable single bedroom. The principal bedroom benefits from its own dressing room and private en-suite, while a spacious family bathroom serves the remaining rooms. The overall layout offers both flexibility and comfort for modern family life.

Externally, the property enjoys an established rear garden with patio areas, lawn, and a charming summer house at the far end, while the frontage provides an impressive in-and-out driveway and access to a double garage.

Located within easy reach of Danbury Village centre, the property enjoys excellent access to local amenities including a village pub, countryside walks straight from the doorstep, and convenient links to Chelmsford City Centre and Maldon, both a short drive away. For commuters the new Beaulieu Park Station is just 5 miles in distance with fast links to London Liverpool Street. The home also falls within walking distance of Danbury Park Primary School, making it particularly appealing for families.

This is a rare opportunity to acquire a spacious and characterful cottage in one of Danbury's most sought-after lanes, combining generous accommodation, a beautiful woodland backdrop, and superb access to village life and surrounding countryside. With its flexible layout, established gardens, and excellent potential for further enhancement, Cransley Cottage is a home that will appeal to a wide range of buyers seeking both space and setting in equal measure.

Riffhams Lane

Danbury, CM3 4DS

A spacious four-bedroom Cottage offering generous and versatile accommodation in a highly regarded residential setting, with excellent access to local amenities and surrounding countryside.

Council Tax band: F

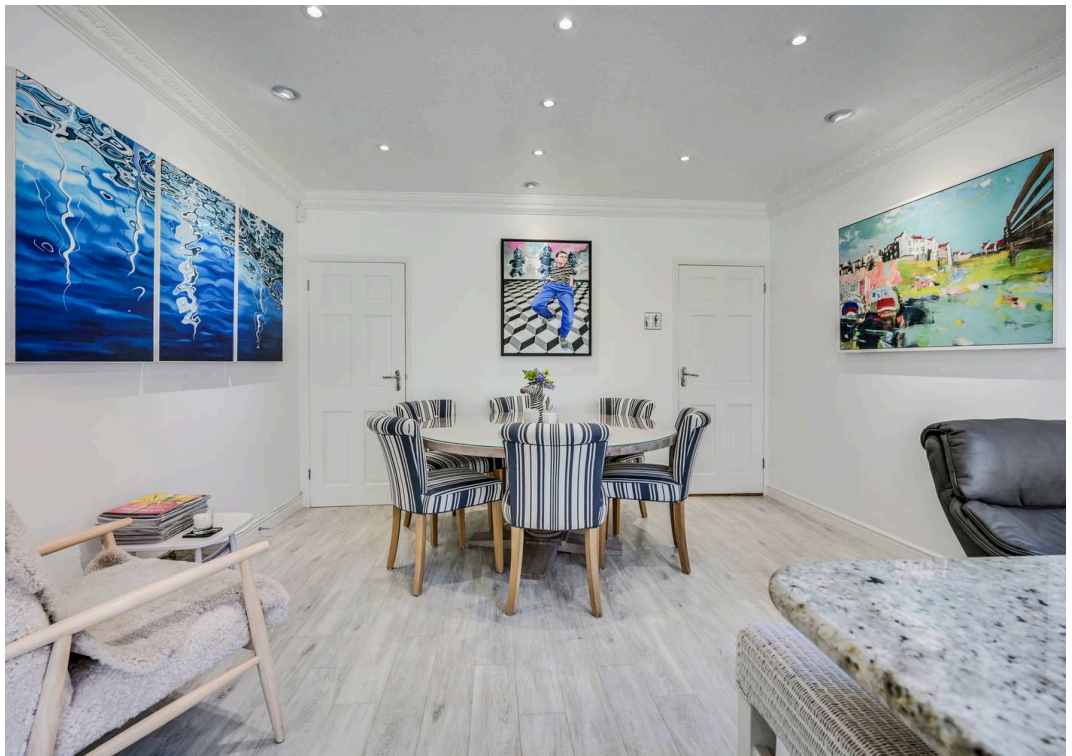
Tenure: Freehold

EPC Energy Efficiency Rating: C

EPC Environmental Impact Rating:

- 4-bedroom semi-detached cottage set on sought-after Danbury Lane
- Stunning woodland outlook with direct access to countryside walks
- Extended open-plan kitchen/diner opening onto a pretty rear garden
- In-and-out driveway with parking for multiple vehicles plus double garage
- Principal suite with dressing room and en-suite bathroom



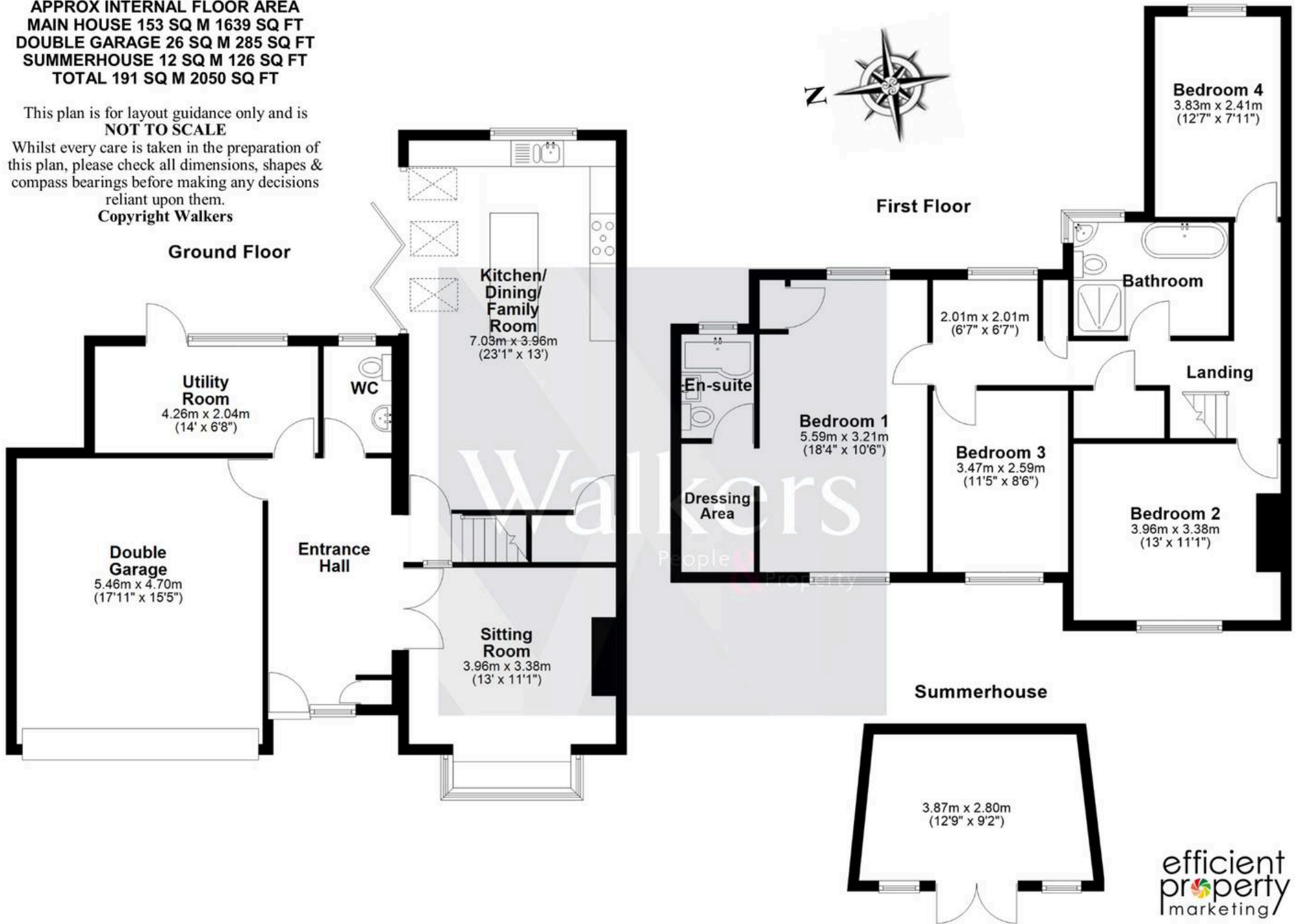






APPROX INTERNAL FLOOR AREA
MAIN HOUSE 153 SQ M 1639 SQ FT
DOUBLE GARAGE 26 SQ M 285 SQ FT
SUMMERHOUSE 12 SQ M 126 SQ FT
TOTAL 191 SQ M 2050 SQ FT

This plan is for layout guidance only and is **NOT TO SCALE**
Whilst every care is taken in the preparation of this plan, please check all dimensions, shapes & compass bearings before making any decisions reliant upon them.
Copyright Walkers



Psst... Have you heard of

Walkers discreet marketing?

Many people lose out on their dream home to someone in a better position.

Often, it is because they have delayed putting their house on the market, preferring to find somewhere first and then sell,

That is why we have innovated a totally unique and highly confidential moving home solution to put you in a competitive position.

Let us find you a buyer *without any advertising or pressure* and without the neighbours knowing.

Your secret is safe with us...

Get in touch for a complimentary valuation.

Looking To Sell Or Let Your Home?

Book your free valuation to see how much your home is worth.

Contact Us
01277 355005



Our Website

www.walkersstates.co.uk



Our Address

90 High Street
Ingatstone
CM4 9DW



www.walkersstates.co.uk

About Us

Walkers | People & Property is built on a lifelong family passion for homes. Martin, Gillian and Adam Walker lead a respected, professional team who live and breathe all aspects of property. With over 30 years of experience, we understand the moving process on a personal level and are committed to delivering exceptional results. Most of all, helping people move is our hobby, and handing over the keys to excited buyers remains our favourite moment.

Get In Touch



Browse Properties

