



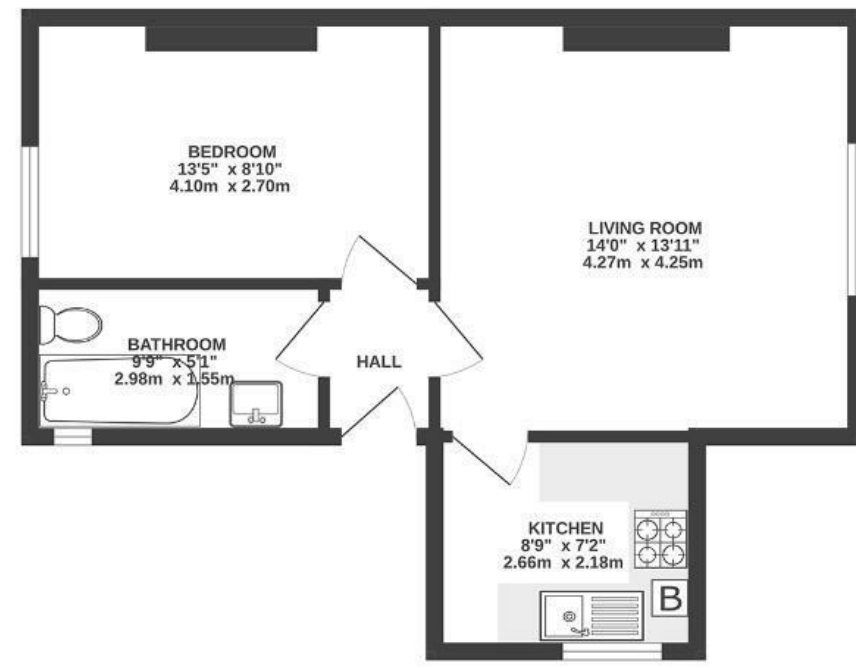
Cheltenham Road

MONTPELIER

APPROXIMATE FLOOR AREA
41 SQM / 436 SQFT



FIRST FLOOR



Boardwalk

Cheltenham

MONTPELIER, BRISTOL



£240,000



1 Bedrooms



BS6 5RR



1 Bathrooms

"I love opening the big sash windows in the lounge, letting in all the morning light with a coffee, and hustle and bustle of Stokes Croft on a warm summer's eve."

