

Rolfe East



Harriers Close, W5

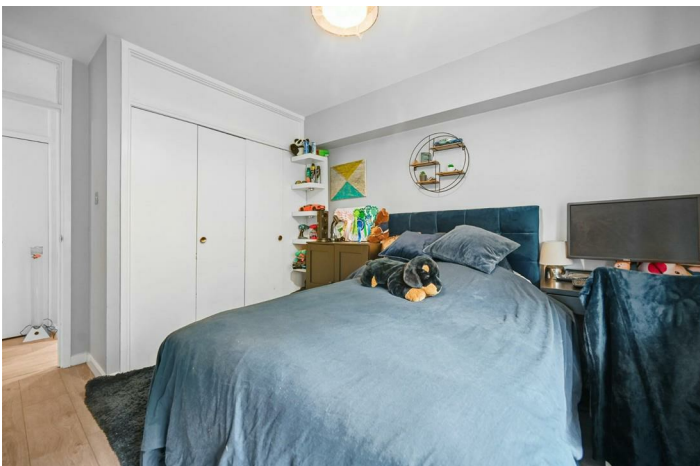
£499,999

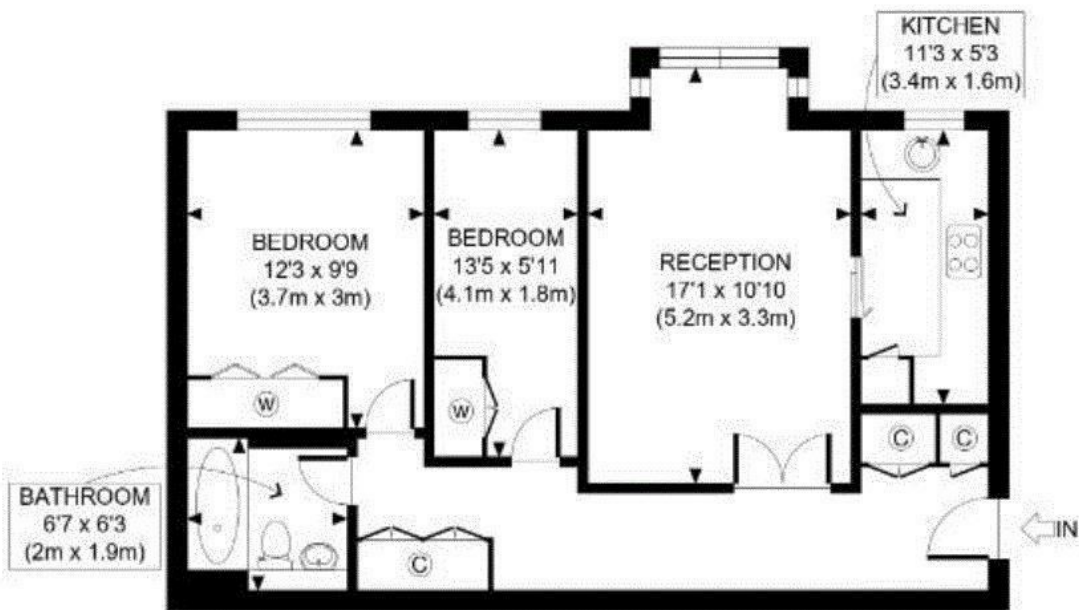
- Share of Freehold
- Two Double Bedrooms
- Close to Ealing Broadway
- Second Floor Apartment
- Garage
- Excellent Transport Facilities Nearby

At approximately nine minutes walk from Ealing Broadway station is this two double bedroom top floor apartment with share of freehold. Set in a purpose built block, this property is presented in great condition throughout and boasts its own garage. To arrange your appointment, please call Rolfe East on 020 8567 2242.

 2  1  1  D

Council Tax Band: D





SECOND FLOOR
GROSS INTERNAL
FLOOR AREA 639 SQ FT



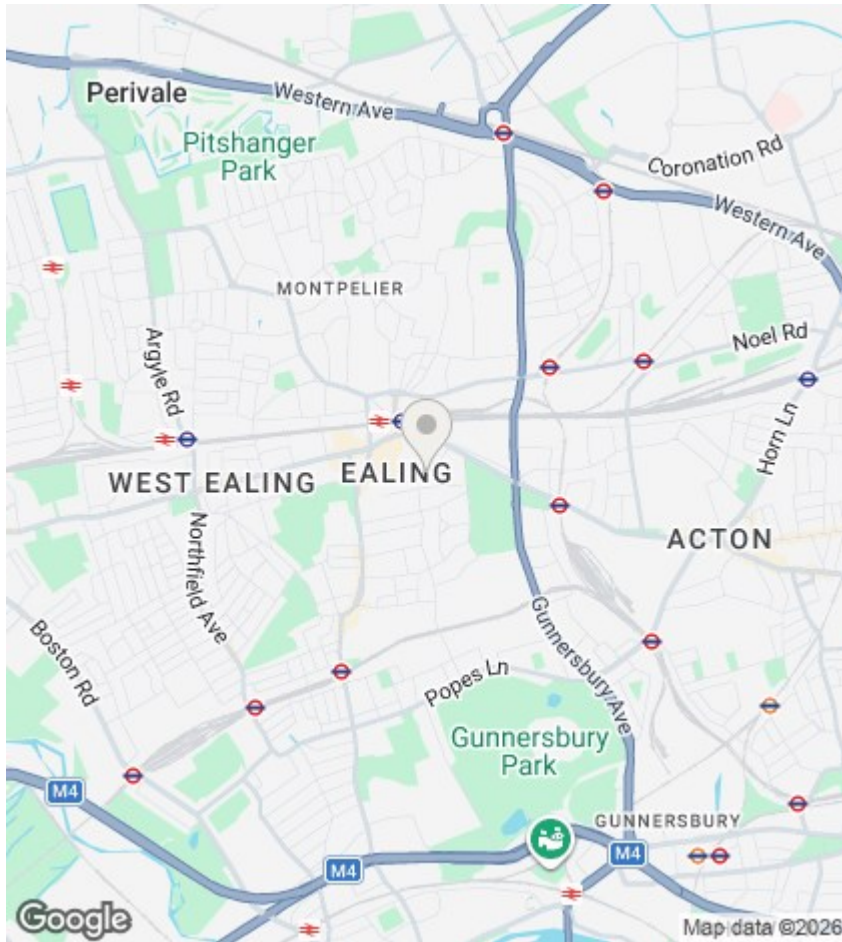
APPROX. GROSS INTERNAL FLOOR AREA: 639 SQ FT/ 59 SQM

Rolfe East

This plan is for illustrative purposes only and should be used as such by any prospective client. Whilst every attempt has been made to ensure the accuracy of the Floor Plan contained here, measurements of the doors, windows, rooms and any other items are approximate and no responsibility is taken for any errors, omissions, or misstatement. The services, systems and appliances shown have not been tested and no guarantee as to the operability or efficiency can be given.

PROPERTY PHOTO PLANS
END COPY COPY FOR PROPERTY SERVICES

Directions



Viewings

Viewings by arrangement only.
Call 020 8567 2242 to make an appointment.

EPC Rating:

D

Energy Efficiency Rating		
	Current	Potential
<i>Very energy efficient - lower running costs</i>		
(92 plus) A		
(81-91) B		
(69-80) C		80
(55-68) D	68	
(39-54) E		
(21-38) F		
(1-20) G		
<i>Not energy efficient - higher running costs</i>		
England & Wales	EU Directive 2002/91/EC	