



SPRING GROVE, W4

£699,000

Two bedroom
Two bathroom
Wrap around balcony
River location
Gated development private
Energy rating: c

@marshandparsons
marshandparsons.co.uk

MARSH &
PARSONS



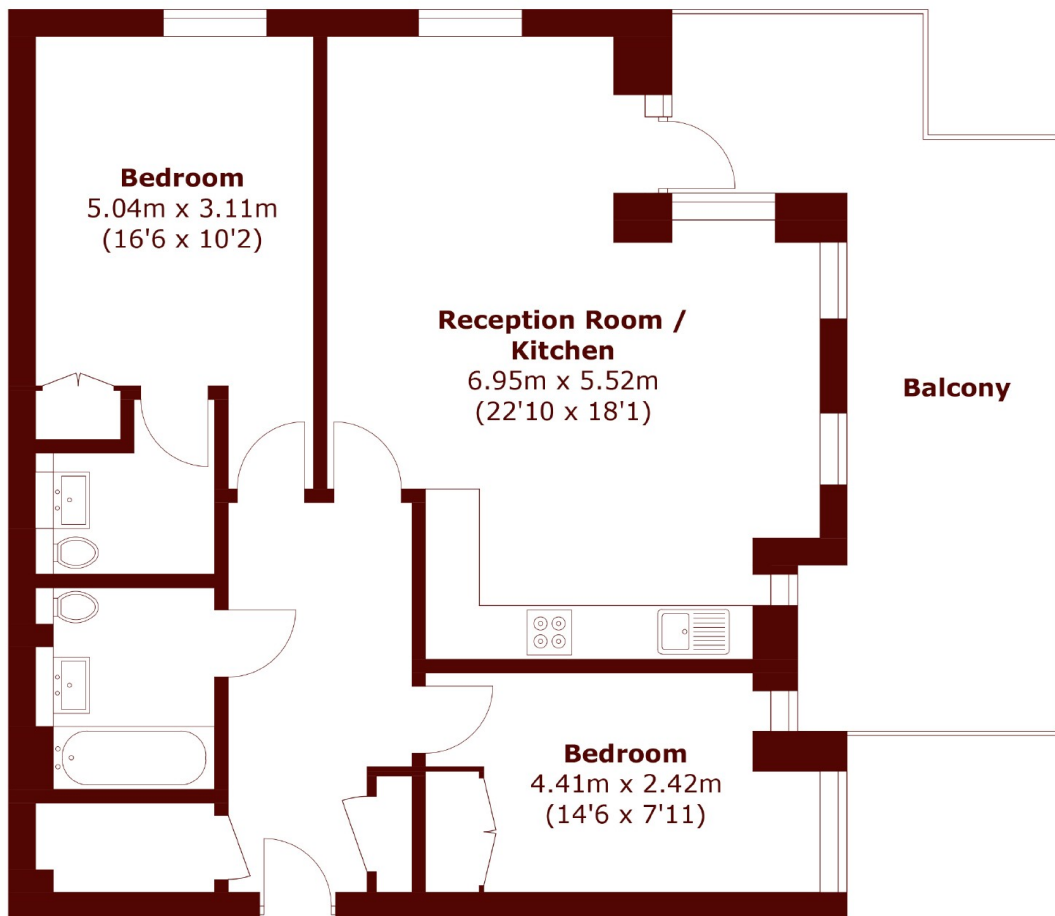
ABOUT THE PROPERTY

A well-proportioned two bedroom, two bathroom apartment is located moments from the River Thames.

Spring Grove is a quiet family road located within Strand on the Green and its array of local shops, restaurants and fantastic schools as well as the pubs and eateries along the River Thames. There are also excellent transport links with Kew Bridge station close by, featuring the overland service and road links to Heathrow Airport.



STEP INSIDE SPRING GROVE



Total area (approx.): 77.4 sq. m (833.1 sq. ft)
Balcony: 21.6 sq. m (232.5 sq. ft)

Chiswick
020 8994 2556

Energy Rating: C We aim to make our particulars both accurate and reliable. However, they are not guaranteed; nor do they form part of an offer or contract. If you require clarification on any points then please contact us, especially if you're traveling some distance to view. Please note that appliances and heating systems have not been tested and therefore no warranties can be given as to their good working order

MARSH &
PARSONS