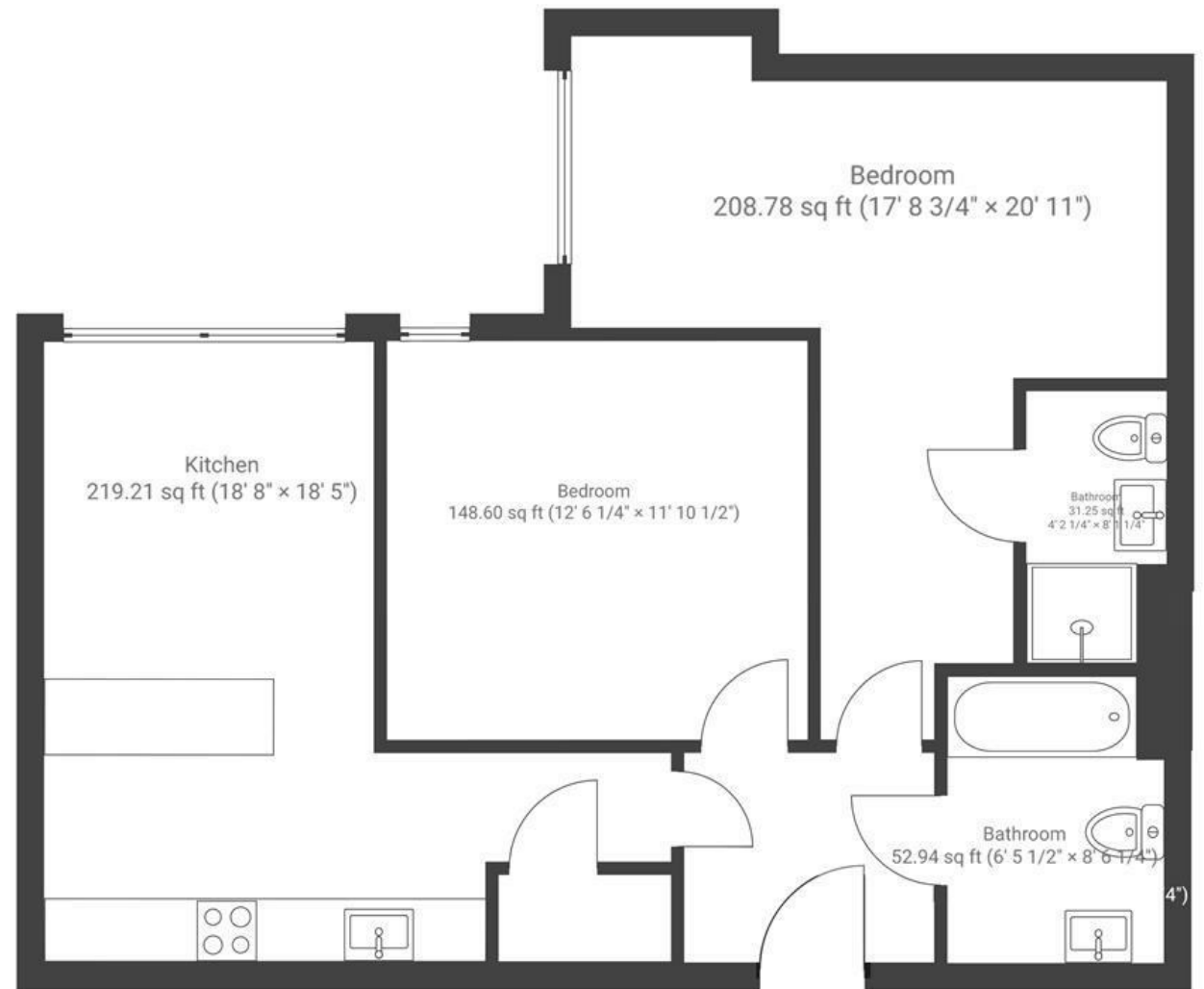


Boulevard View

WHITCHURCH

APPROXIMATE FLOOR AREA
70.14 SQM / 755 SQFT



Boardwalk

Whitchurch

, BRISTOL

£

£220,000

zzz

2 Bedrooms



BS14 0TL



2 Bathrooms

"While the crowds pack into Ashton Court, we walk out our front door and watch the balloons land in the field opposite. It's magical and so peaceful - usually just us and a few neighbours. Day-to-day life is just as lovely; we adore walks in the nature reserve (look out for the goats!). The apartment is filled with sun all day, and sipping coffee at the island is the perfect way to start the morning. It's a joyful, bright home."

