



Price

£93,750

Leasehold

3x  2x  1x 

**St. Lawrence Crescent,
Coxheath, Maidstone,
Kent, ME17**

Wards
Helping you move forwards



Main features

- **25% SHARED OWNERSHIP**
- **Stair-casing to higher percentage possible**
- **Car port and driveway**
- **Situated in the popular village of Coxheath, just a short walk to local shops and schools**
- **Perfect opportunities to get on the property ladder, suitable for first time buyers and many more**

Accommodation

GROUND FLOOR

Entrance Hall
 Downstairs Cloakroom: 5'0 x 3'0 (1.53m x 0.92m)
 Kitchen/Diner: 15'0 x 9'0 (4.58m x 2.75m)
 Lounge: 14'0 x 12'0 (4.27m x 3.66m)

FIRST FLOOR

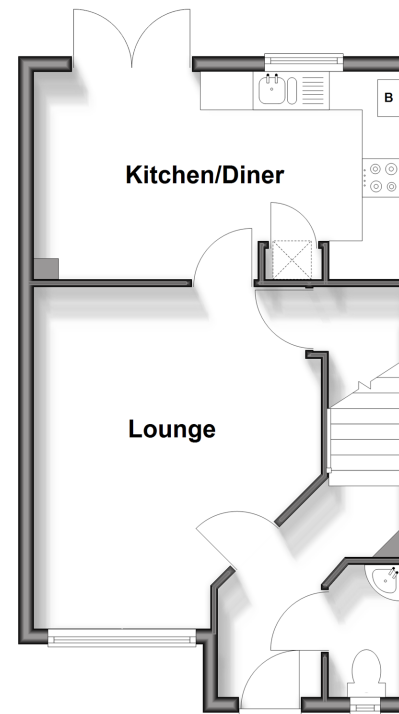
Landing
 Bedroom 1: 12'0 x 9'1 (3.66m x 2.77m)
 En-Suite Shower Room: 6'0 x 5'0 (1.83m x 1.53m)
 Bedroom 2: 9'0 x 7'1 (2.75m x 2.16m)
 Bedroom 3: 7'1 x 5'1 (2.16m x 1.55m)
 Bathroom: 6'1 x 6'0 (1.86m x 1.83m)

OUTSIDE

Car Port and Off Road Parking
 Front and Rear Gardens

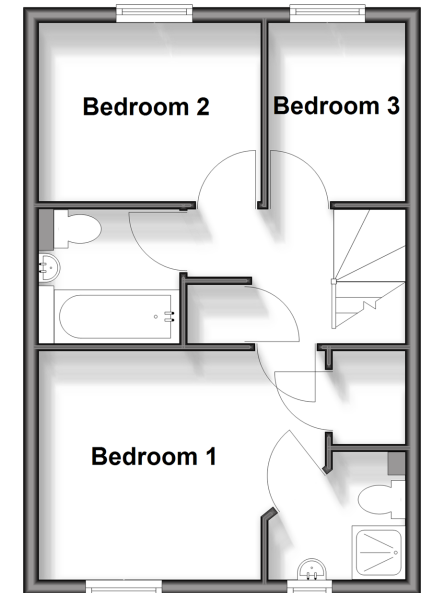
Ground Floor

Approx. 37.0 sq. metres (398.7 sq. feet)



First Floor

Approx. 34.9 sq. metres (375.9 sq. feet)



Call Loose - 01622 744067 ■ wardsofkent.co.uk

■ Legal advice should be taken to verify fixtures/fittings, planning, alterations and/or lease details

■ Appliances & services are untested, dimensions are approximate and floor plans are not to scale



13022189/20251009/KIR/