

HUNTERS[®]

HERE TO GET *you* THERE



Tulse Hill

SW2 3BU

£2,700 Per Calendar Month



Three double bedroom apartment with private rear south facing patio garden.

Sitting in the heart of Tulse Hill this wonderful architecturally designed property boasts three good sized double bedrooms and a spacious separate reception.

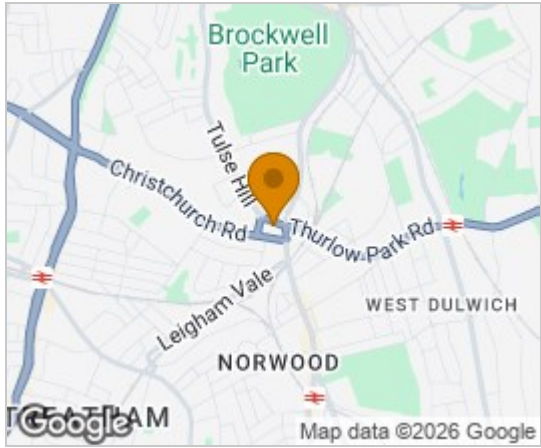
The modern fitted kitchen comes with a range of high specification integrated appliances. The contemporary bathroom comes with both bath and shower fitting.

To the rear of the property accessed via the kitchen is a private south facing garden the perfect entertainment space for the fast approaching summer.

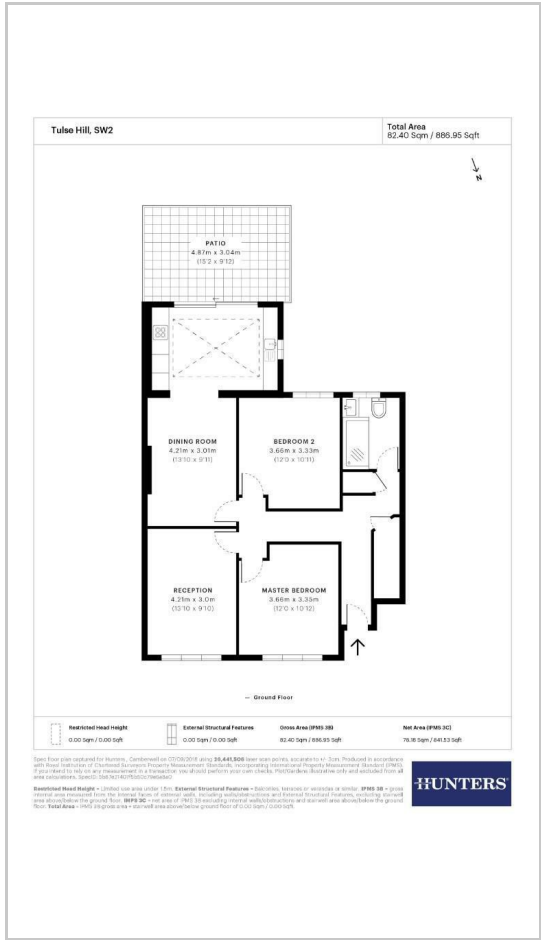
Minutes from excellent transport links including Tulse Hill overland station with easy access to the West End and City . There are a vast range of bars restaurants and local amenities nearby.



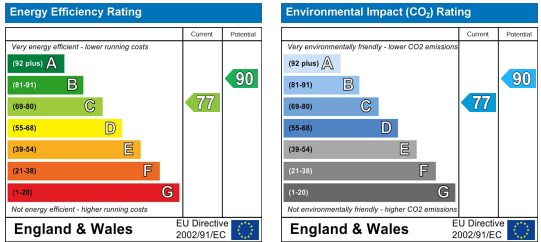
Area Map



Floor Plans



Energy Efficiency Graph



These particulars are intended to give a fair and reliable description of the property but no responsibility for any inaccuracy or error can be accepted and do not constitute an offer or contract. We have not tested any services or appliances (including central heating if fitted) referred to in these particulars and the purchasers are advised to satisfy themselves as to the working order and condition. If a property is unoccupied at any time there may be reconnection charges for any switched off/disconnected or drained services or appliances - All measurements are approximate. **THINKING OF SELLING?** If you are thinking of selling your home or just curious to discover the value of your property, Hunters would be pleased to provide free, no obligation sales and marketing advice. Even if your home is outside the area covered by our local offices we can arrange a Market Appraisal through our national network of Hunters estate agents.